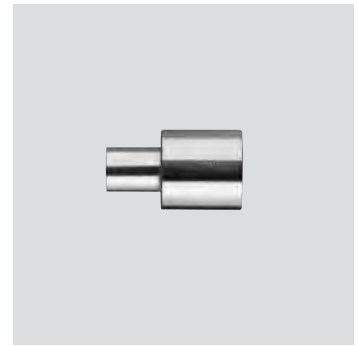
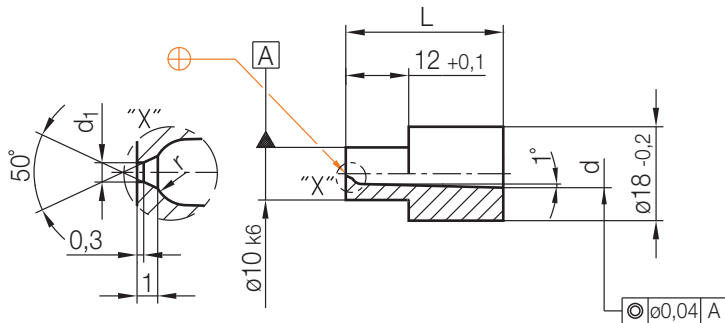


Z516/...

Düsenmundstück
Nozzle insert
Douille d'injection

Mat.: 1.2343/52 + 2 HRC

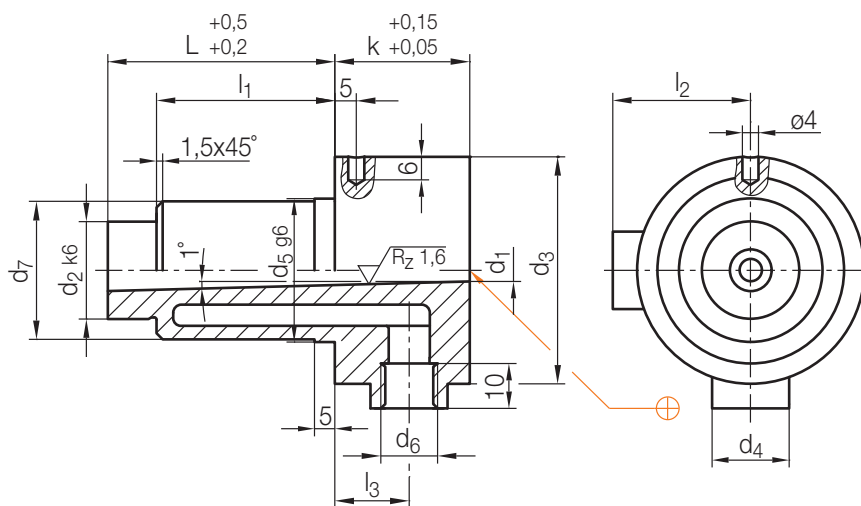


r	d	L	d ₁	Nr./No.
1,5	4	30	0,8	Z516/4 x30/0,8
2	5,4			5,4x30/0,8

Z518/...

Angießbuchse, temperierbar
Sprue bushing, integrated cooling
Buse d'injection à température réglable chauffable

Mat.: 1.2363/54 + 2 HRC



5

k	d ₃	l ₃	l ₂	l ₁	d ₇	d ₅	d ₄	d ₆	d ₂	L	d ₁	Nr./No.
23	45	13,5	28,5	36	25	26	15	M10x1	18	46	4	Z518/18x 46/4
				46								56
				66								76
				86								96
32	56	18	34	44	34	35	19	M14x1,5	24	56	5,5	Z518/24x 56/5,5
				64								76
				84								96
				104								116