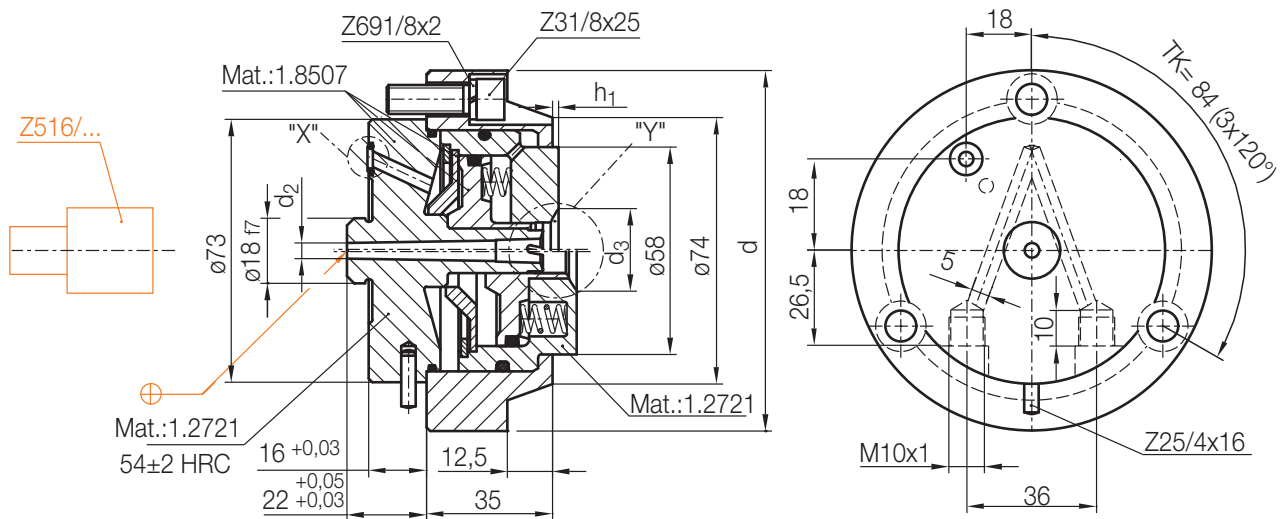
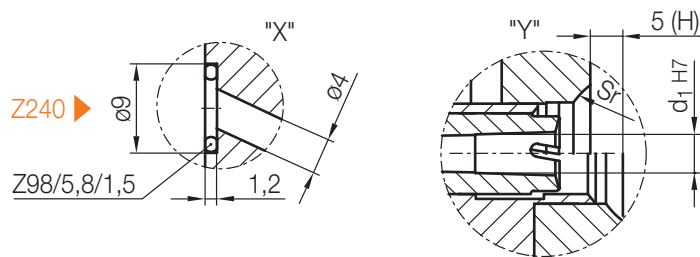


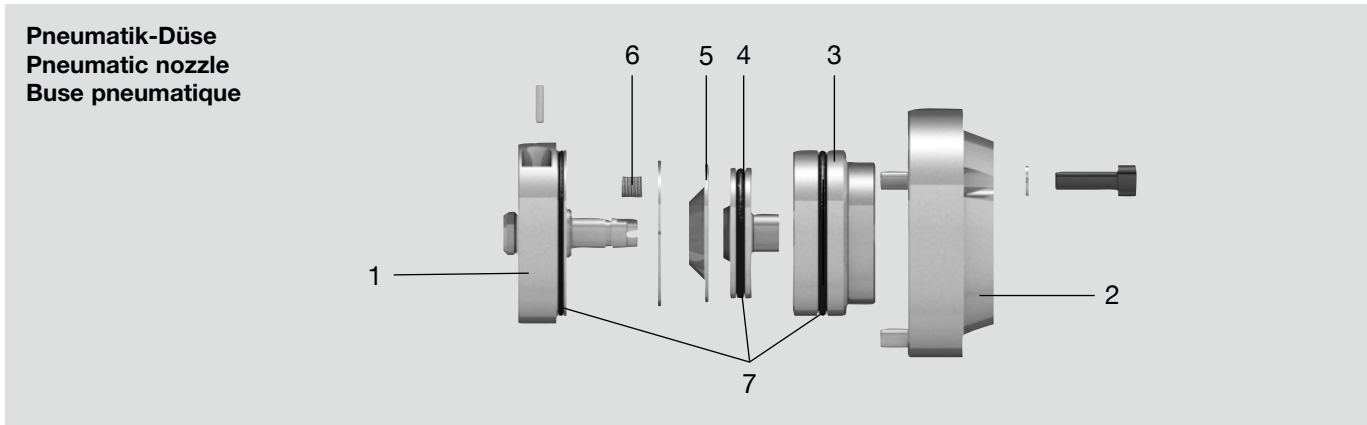
Z515/...

Pneumatik-Düse
Pneumatic nozzle
Buse pneumatique



H = Hub / Stroke / Course

h_1	d_3	d_2	d	d_1	S_r	Nr./No.
1	-	4,2	100	6	-	Z515/100/6
4	24	7,5			15	Z515/100/6 /15
2,5	30		4,2	6		40
		5,6	7,5		7,5/40	



Pos.	Benennung	Designation	Désignation	Stück Quantity Pièce
1	Düsenkörper	Nozzle body	Corps de buse	1
2	Flansch	Flange	Bride	1
3	Hohlkolben	Hollow piston	Piston creux	1
4	Kolben	Piston	Piston	1
5	Scheibe	Washer	Rondelle	1
6	Druckfeder	Compression spring	Ressort de compression	1
7	Dichtungssatz	Seal assembly	Pochette de joint	1

5

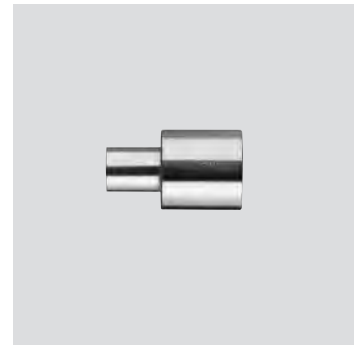
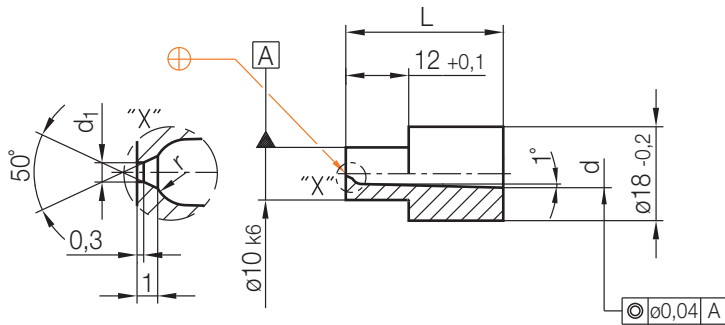
Nr./No.	1 Z515/...	2 Z515/...	3 Z515/...	4 Z515/...
Z515/ 100/6	... 100/6 -01/E	... 100/6 -02/E	... 100/6 -03/E	... 100/6 -04/E
100/6 /15			... 100/6/15 -03/E	
100/6 /40			... 100/6/40 -03/E	
100/7,5 /15	... 100/7,5 -01/E		... 100/7,5/15 -03/E	... 100/7,5 -04/E
100/7,5 /40			... 100/7,5/40 -03/E	

Nr./No.	5 Z515/...	6 Z515/...	7 Z515/...
Z515/ 100/6	... 100/6 -05/E	... 100/6 -06/E	... 100/6 -07/E
100/6 /15			
100/6 /40			
100/7,5 /15			
100/7,5 /40			

Z516/...

Düsenmundstück
Nozzle insert
Douille d'injection

Mat.: 1.2343/52 + 2 HRC

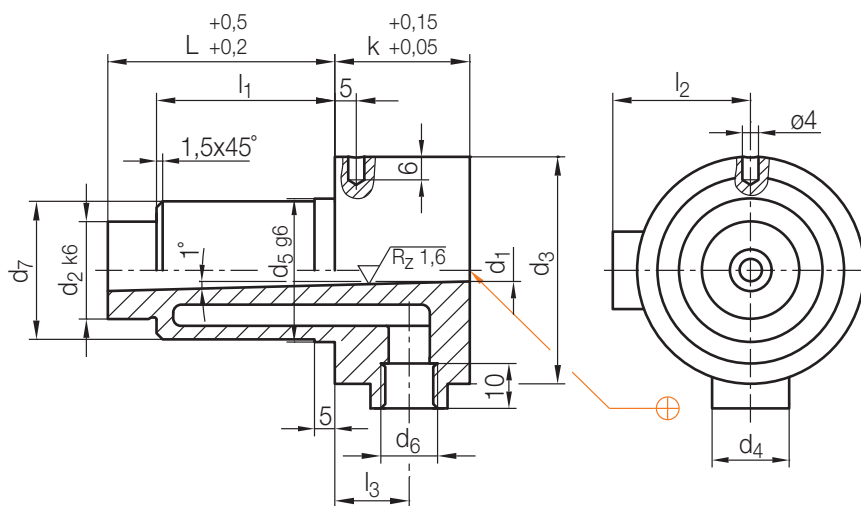


r	d	L	d ₁	Nr./No.
1,5	4	30	0,8	Z516/4 x30/0,8
2	5,4			5,4x30/0,8

Z518/...

Angießbuchse, temperierbar
Sprue bushing, integrated cooling
Buse d'injection à température réglable chauffable

Mat.: 1.2363/54 + 2 HRC



5

k	d ₃	l ₃	l ₂	l ₁	d ₇	d ₅	d ₄	d ₆	d ₂	L	d ₁	Nr./No.
23	45	13,5	28,5	36	25	26	15	M10x1	18	46	4	Z518/18x 46/4
				46								56
				66								76
				86								96
32	56	18	34	44	34	35	19	M14x1,5	24	56	5,5	Z518/24x 56/5,5
				64								76
				84								96
				104								116