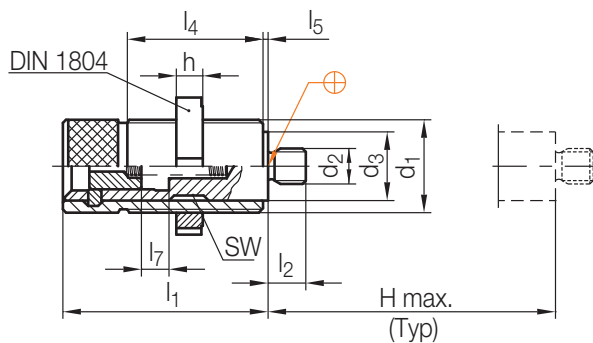


Z165/...

Rückzug-Führungsvorrichtung
 Guided ejector pull back device
 Système de rappel d'éjection



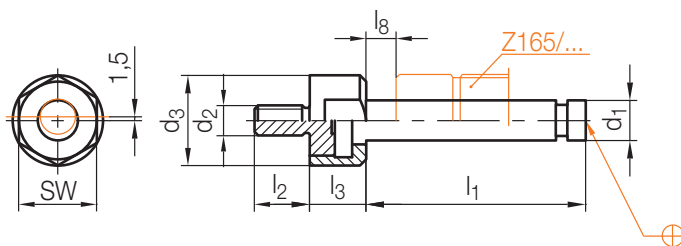
H = Hub / Stroke / Course

SW	h	d ₃	d ₁	d ₂	l ₄	l ₅	l ₇	l ₁	l ₂	H max.	Typ	Nr./No.
20	11	24	M32x1,5	M12x1	45	1	11,5	70	12	55	50	Z165/50
27	12	31	M42x1,5	M16x1,5	60	1	13,5	90	17	70	60	60
34	13	39	M50x1,5	M20x1,5	75	1	15,5	120	22	100	80	80

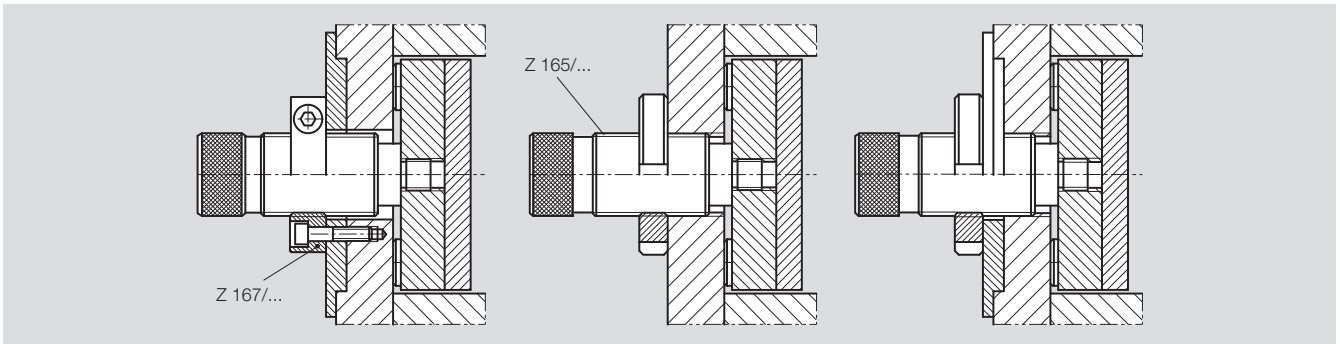
Z166/...

Ausstoßbolzen
 Ejector rod
 Tige d'éjection

Mat.: 1.5919



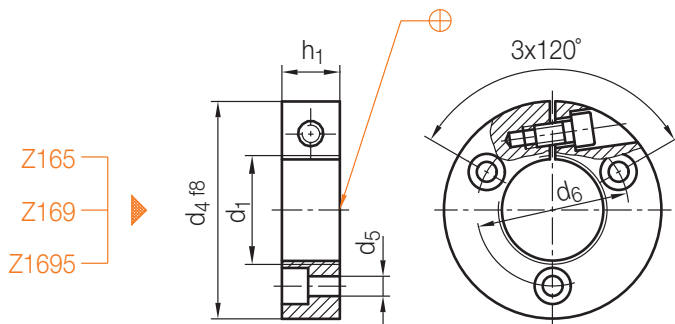
l ₁	l ₂	l ₃	l ₈	SW	d ₂	d ₁	d ₃	Typ	Nr./No.
87,5	22	22,5	12	32	M12	16	36	50	Z166/50
109	25	25	14	46	M16	21	50	60	60
132	30	27	4,5	55	M20	28	60	80	80



Z 167/...

Flansch
Flange
Bride

Mat.: 1.0580/540 N/mm²



Z165
Z169
Z1695

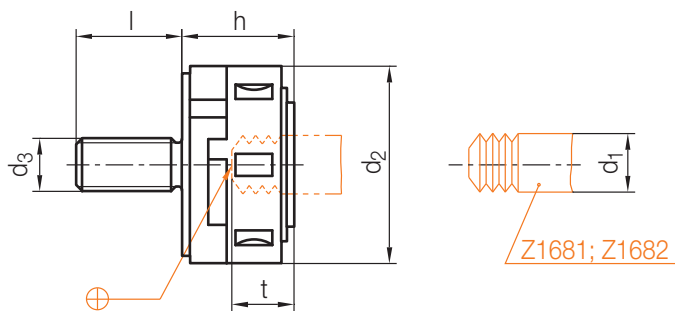
4

d ₄	d ₅	d ₆	h ₁	d ₁	Nr./No.
60	5,5	46	14	M32x1,5	Z 167/32x1,5
82	9	65,5	20	M36x1,5	36x1,5
80	6,6	62	22	M42x1,5	42x1,5
90	9	72	22	M50x1,5	50x1,5

d ₄	d ₅	d ₆	h ₁	d ₁	Nr./No.
90	9	72	25	M52x1,5	Z 167/52x1,5
100	9	80	32	M60x1,5	60x1,5
112	11	90	40	M70x1,5	70x1,5
110	11	91	42	M72x1,5	72x1,5

Z 168/...

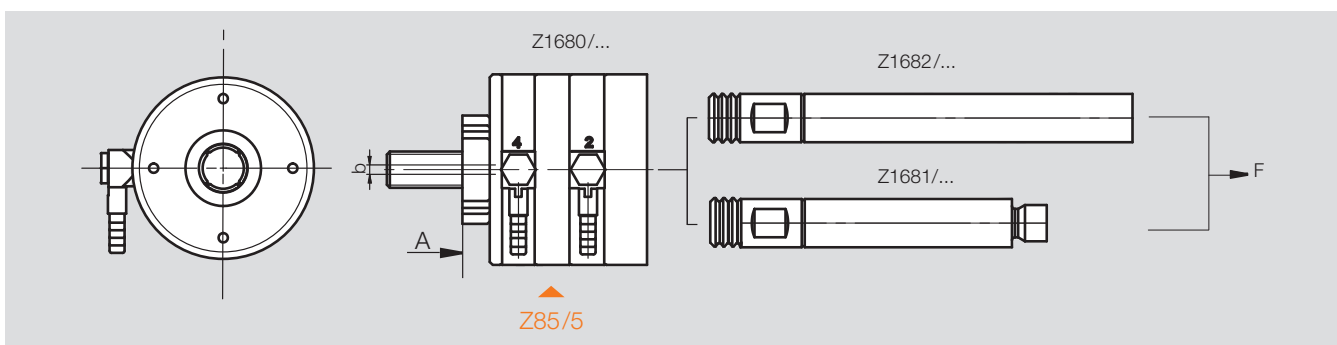
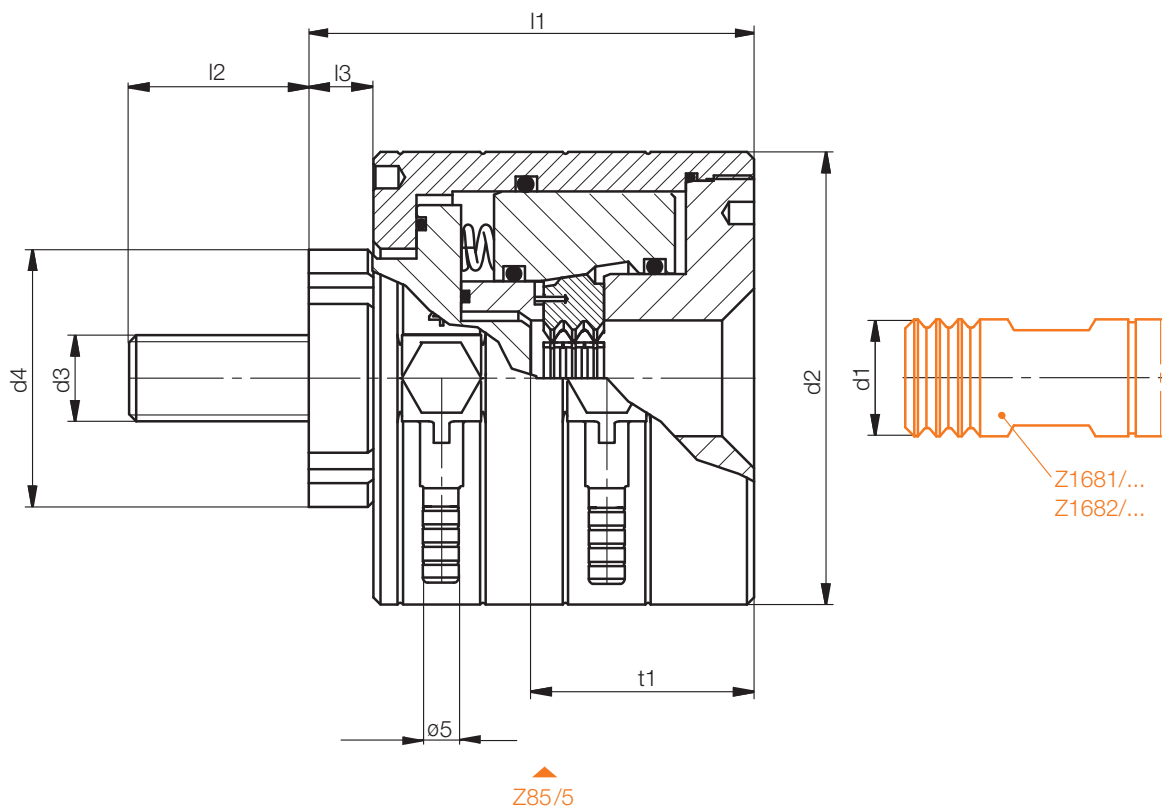
Schnellkupplung
Rapid coupling
Coupleur rapide



t	l	d ₃	d ₂	h	d ₁	Nr./No.
22,7	35	M16	55	40	20	Z 168/20
30	40	M20	72	50	30	30
35	50	M24	90	60	40	40

Z 1680/...

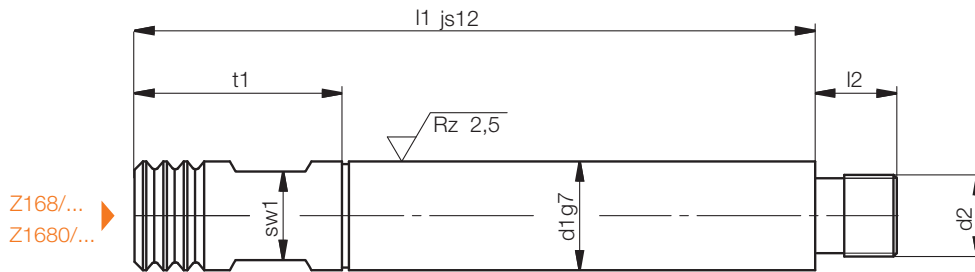
Auswerferkupplung, pneumatisch
 Ejector coupling device
 Coupleur pneumatique



max. F [kN]	t1	l3	l2	l1	d4	d3	d2	d1	Nr. / No.
10	31	9,5	25	62	36	M12	63	16	Z1680/16
20	37	10	30	70	41	M16	75	20	20
40	45	10,5	35	80	56	M20	93	30	30
80	59	10,5	45	105	71	M30	120	40	40

Z 1681/...

Ausstoß-/Kupplungsbolzen
Ejector-/coupling rod
Tige d'éjection



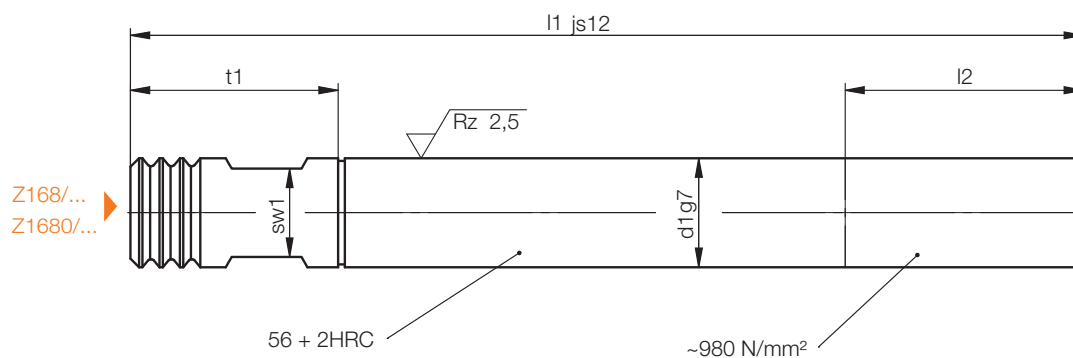
Z168/...
Z1680/...

sw1	t1	l2	d2	d1	l1	Nr. / No.
13	31	12	M12x1	16	100	Z1681/16x100
					125	125
14	37	12	M12x1	20	115	Z1681/20x115
					140	140
22	45	22	M16x1,5	30	140	Z1681/30x140
					170	170
30	59	27	M20x1,5	40	175	Z1681/40x175
					220	220

4

Z 1682/...

Ausstoß-/Kupplungsbolzen,
Ejector-/coupling rod
Tige d'éjection



Z168/...
Z1680/...

sw	t1	l2	d1	l1	Nr. / No.
13	31	50	16	180	Z1682/16x180
14	37		20	220	20x220
22	45	70	30	260	30x260
30	59	90	40	300	40x300