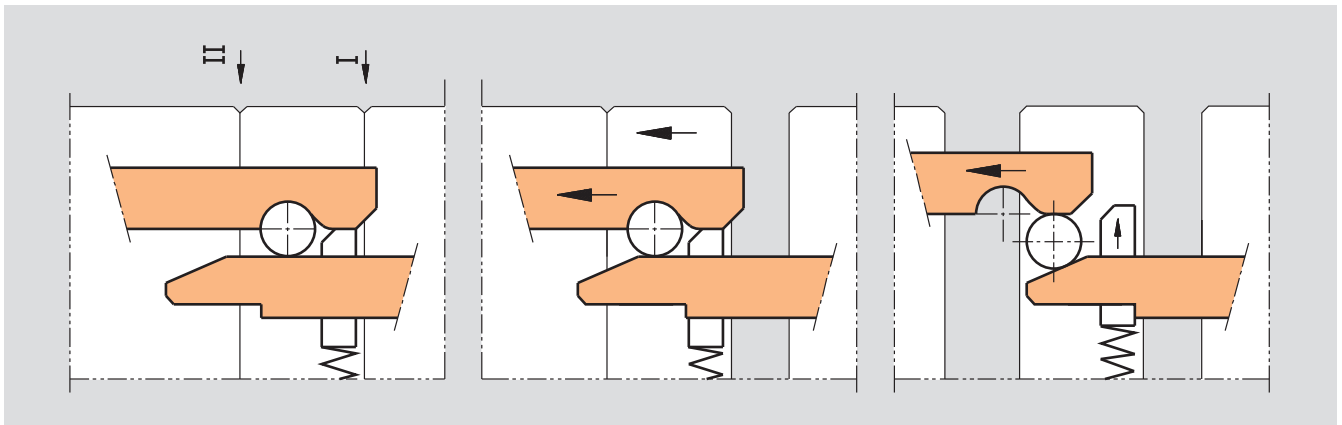


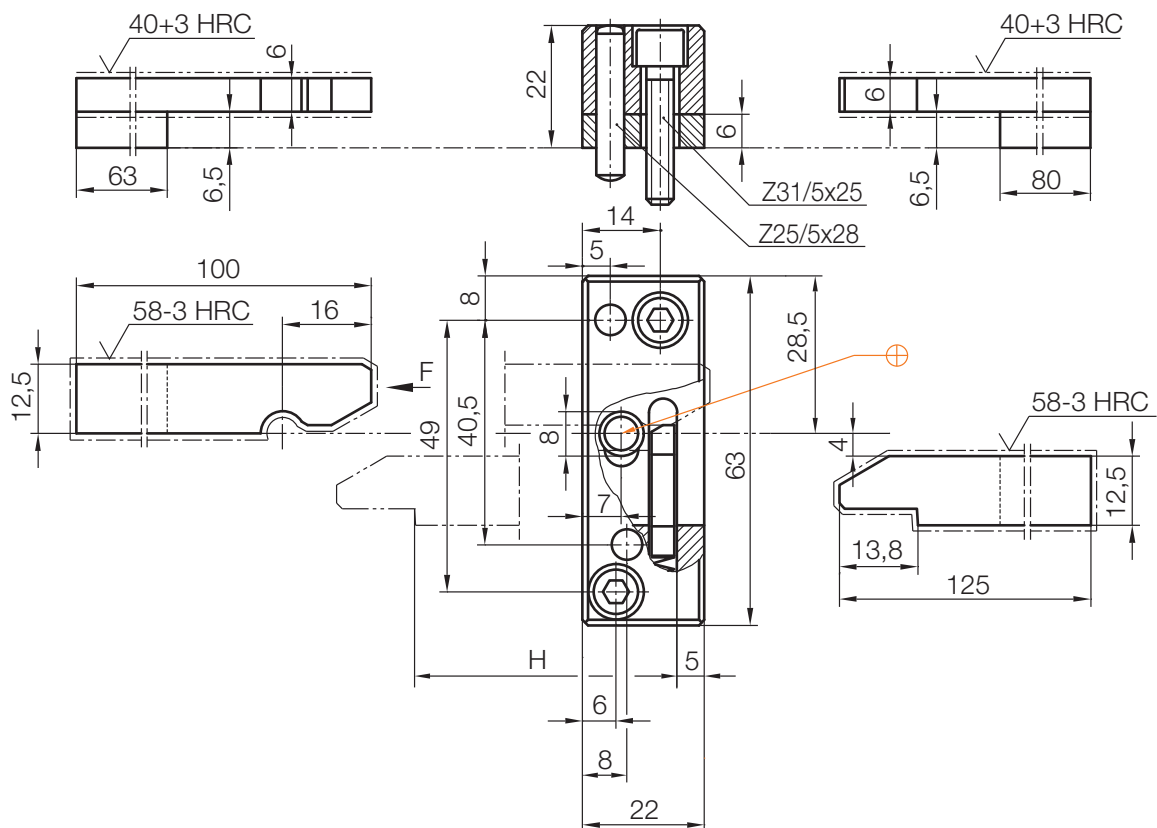
Z170/1

Klinkenzug  
 Latch locking unit  
 Loquet

Mat.: 1.2764



4



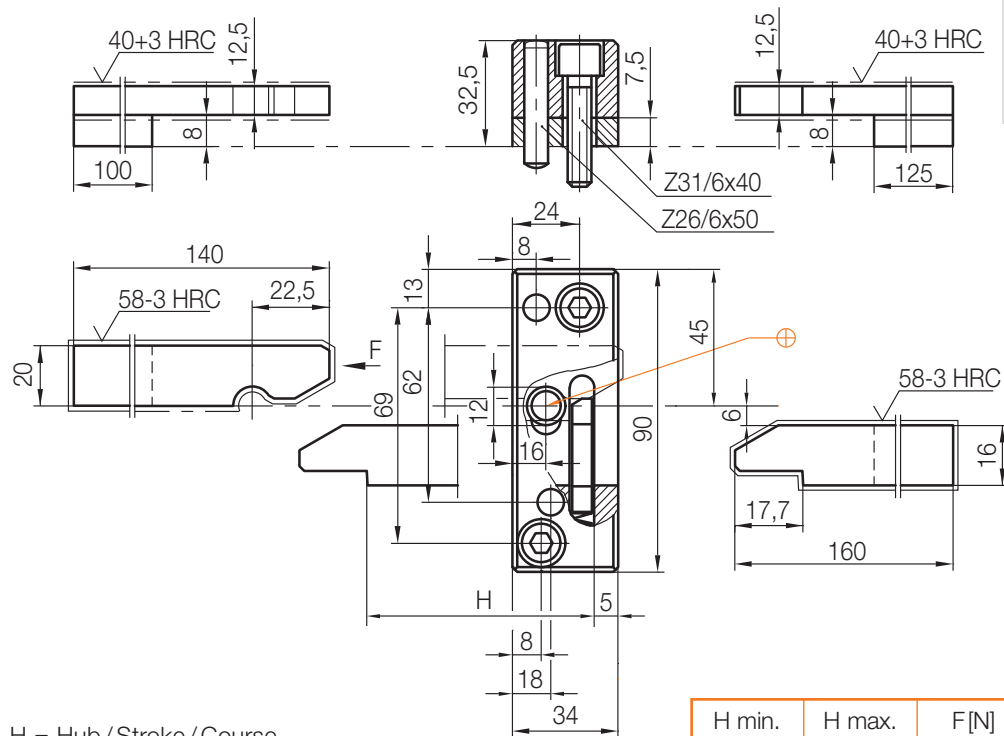
H = Hub/Stroke/Course

H min.	H max.	F [N]	Typ	Nr./No.
5,5	80	8000	1	Z170/1

## Z170/2

Klinkenzug  
Latch locking unit  
Loquet

Mat.: 1.2764



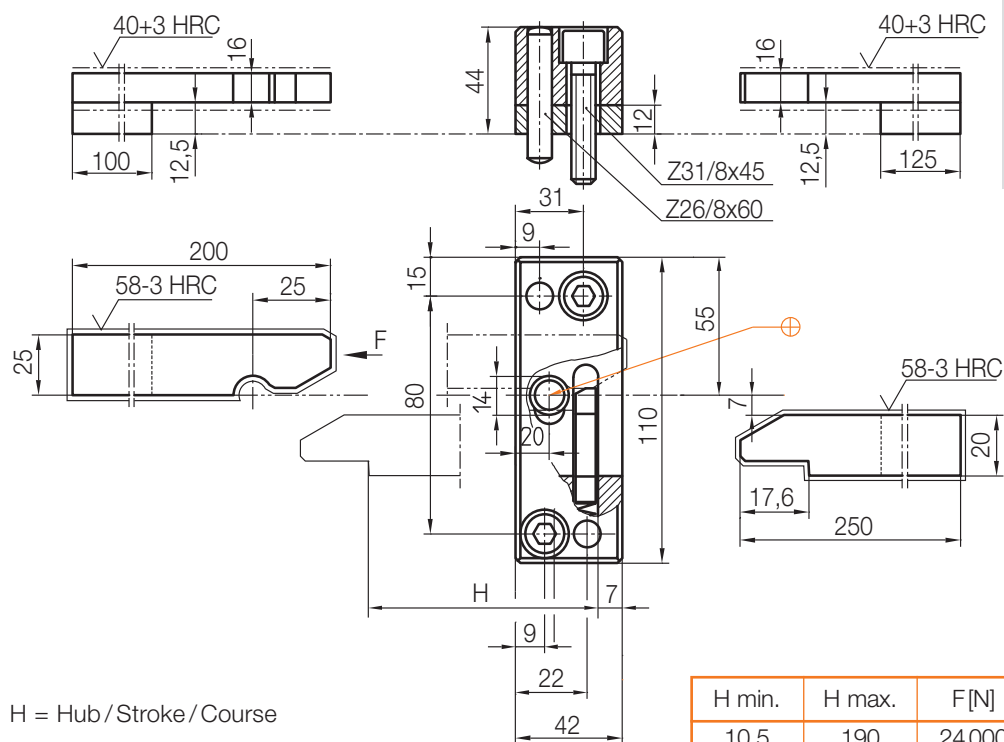
H = Hub / Stroke / Course



## Z170/3

Klinkenzug / Latch locking unit / Loquet

Mat.: 1.2764



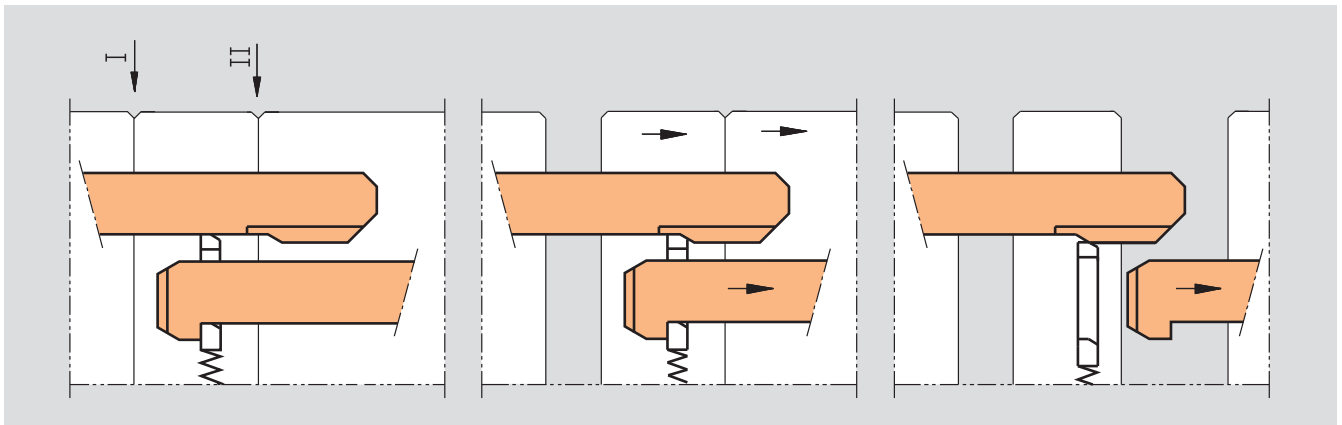
H = Hub / Stroke / Course



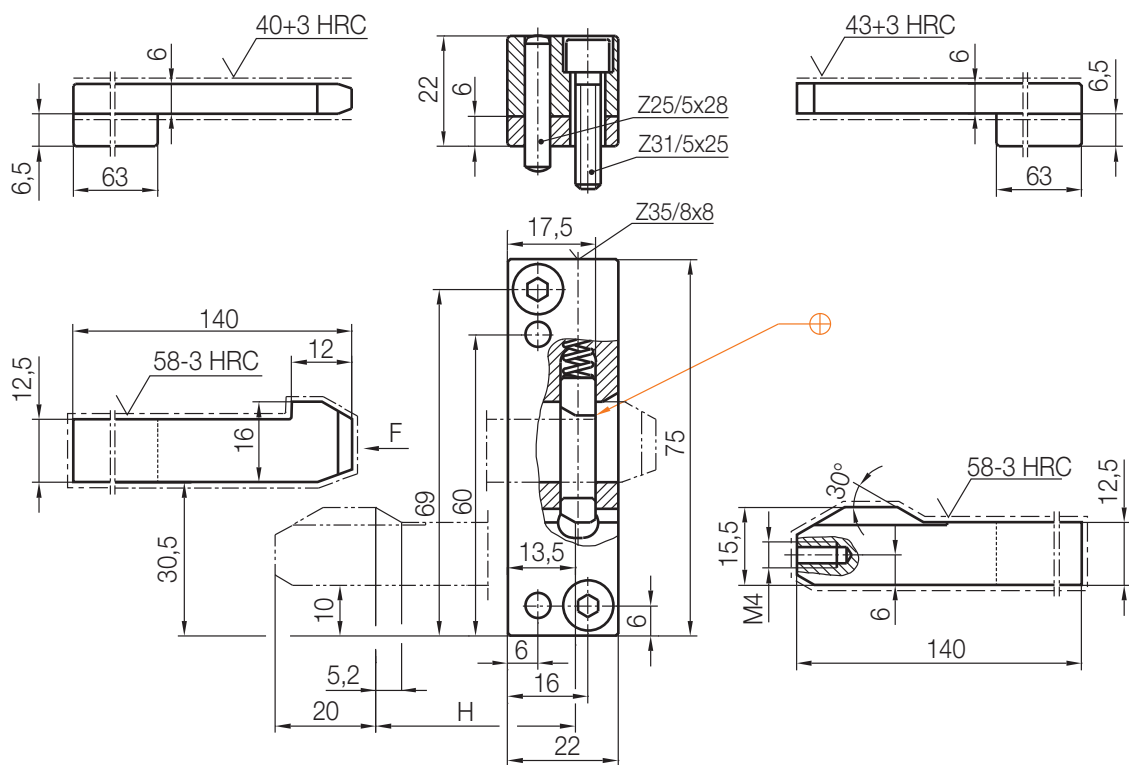
Z171/1

Klinkenzug  
 Latch locking unit  
 Loquet

Mat.: 1.2764



4



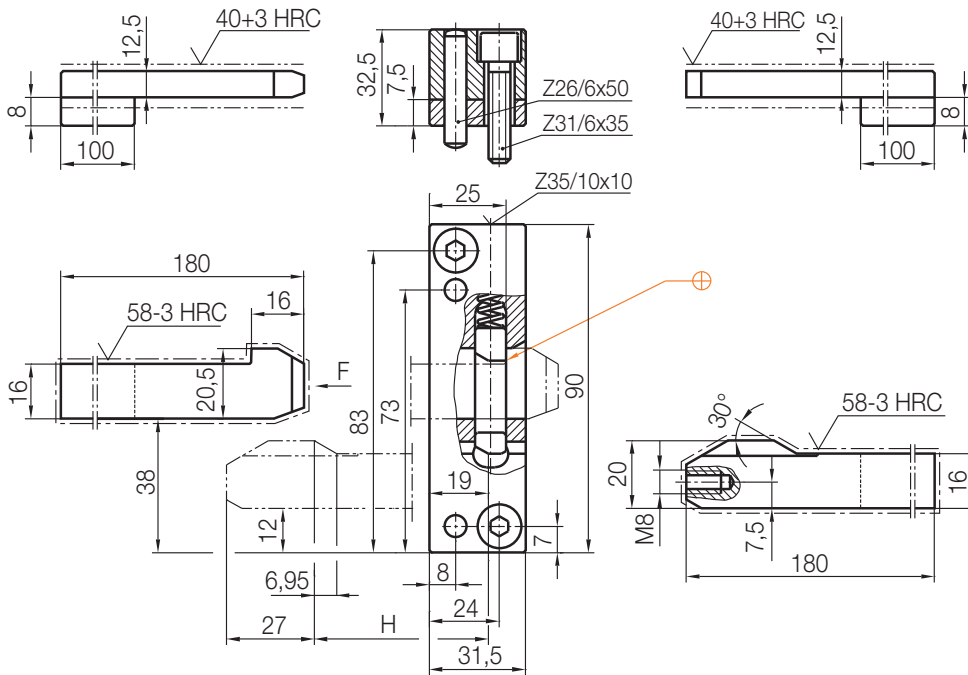
H = Hub/Stroke/Course

H min.	H max.	F [N]	Typ	Nr./No.
5,5	80	6500	1	Z171/1

### Z171/2

Klinkenzug  
Latch locking unit  
Loquet

Mat.: 1.2764



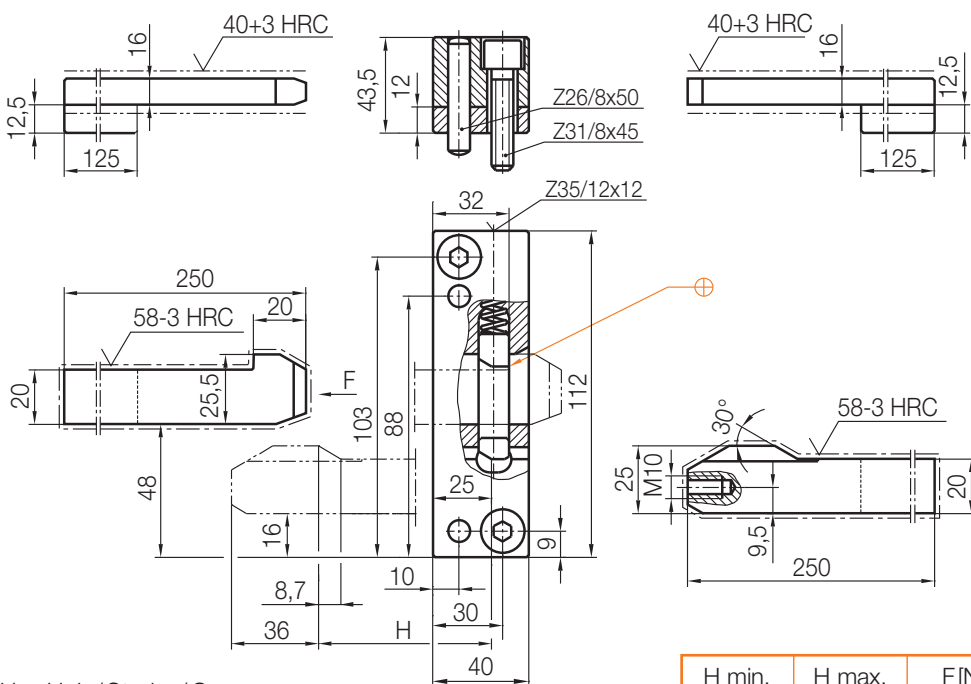
H = Hub / Stroke / Course

H min.	H max.	F [N]	Typ	Nr./No.
7	110	15500	2	Z171/2

### Z171/3

Klinkenzug / Latch locking unit / Loquet

Mat.: 1.2764



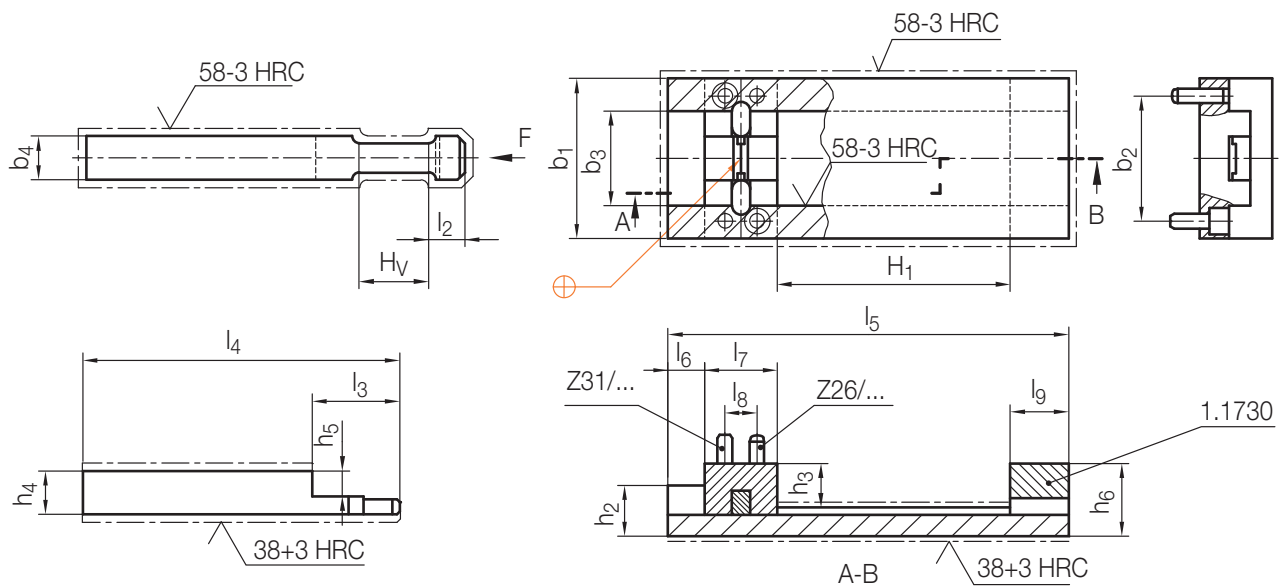
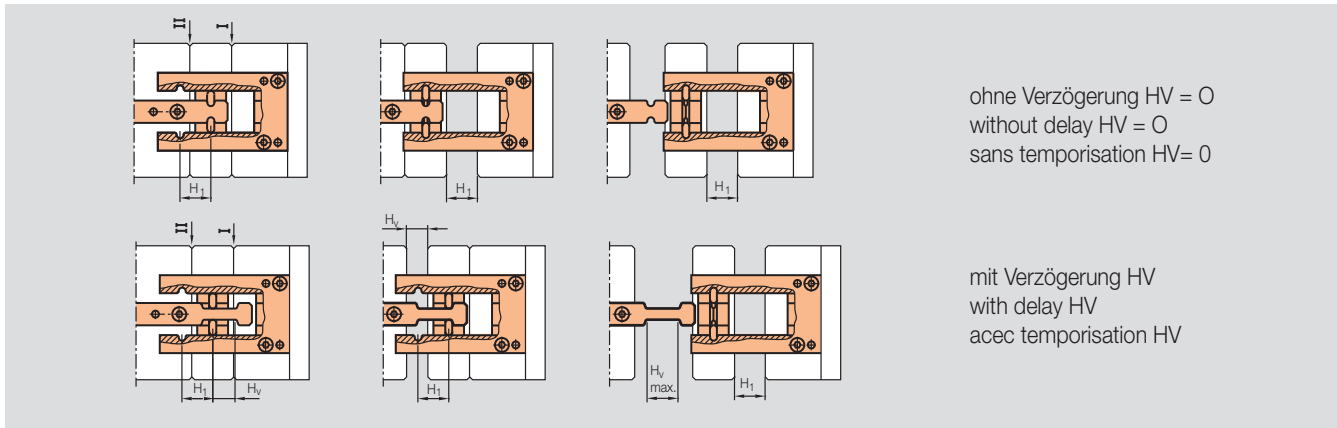
H = Hub / Stroke / Course

H min.	H max.	F [N]	Typ	Nr./No.
9	160	22000	3	Z171/3

## Z174/...

Klinkenzug  
 Latch locking unit  
 Loquet

Mat.: 1.2762



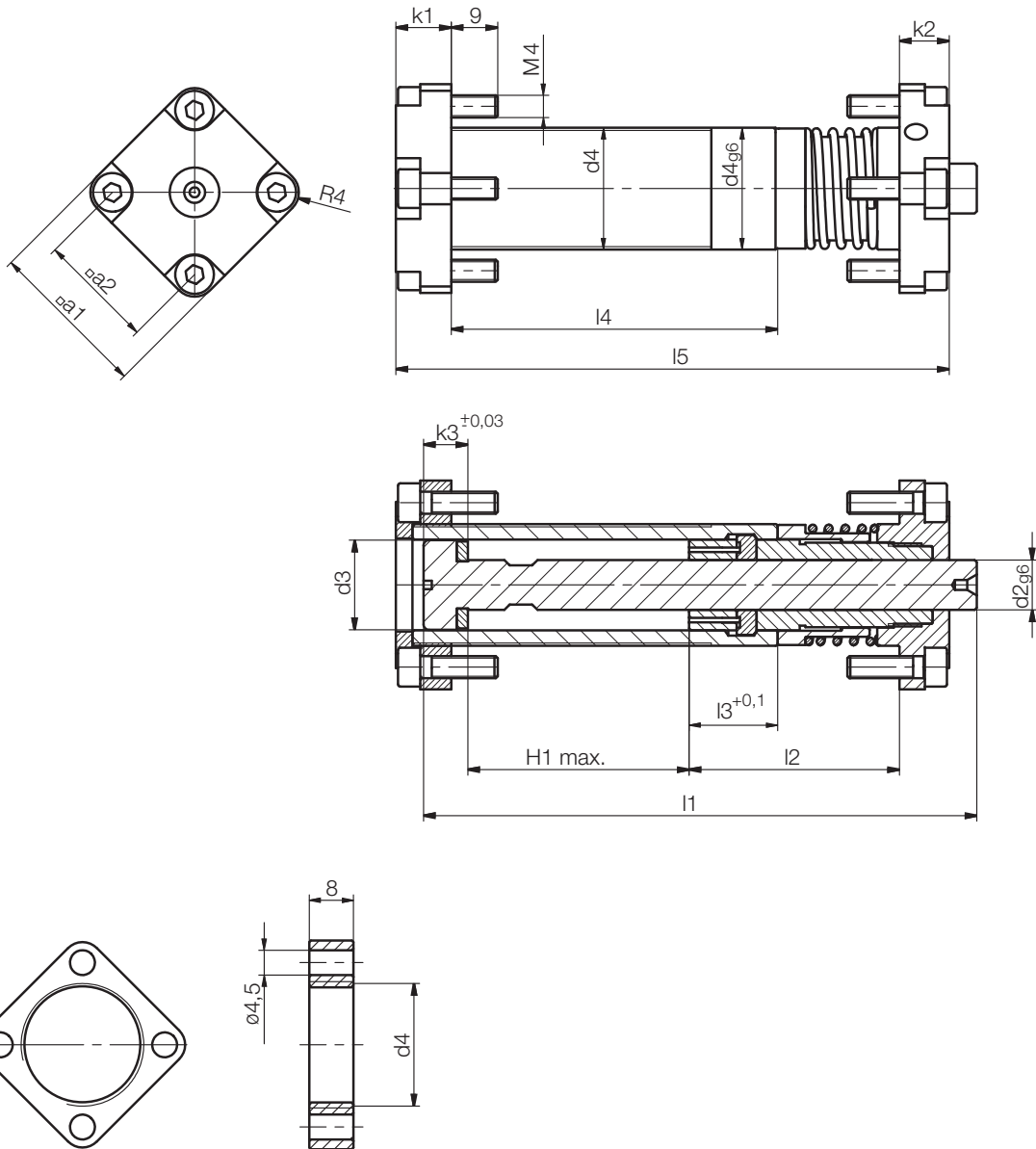
$H_1; H_V = \text{Hub / Stroke / Course}$

F[N]	Z26	Z31	h <sub>6</sub>	h <sub>5</sub>	h <sub>4</sub>	h <sub>3</sub>	h <sub>2</sub>	b <sub>4</sub>	b <sub>3</sub>	b <sub>2</sub>	l <sub>9</sub>	l <sub>8</sub>	l <sub>7</sub>	l <sub>6</sub>	l <sub>5</sub>	l <sub>4</sub>	l <sub>3</sub>	l <sub>2</sub>	b <sub>1</sub>	H <sub>1</sub>		H <sub>V</sub>	Nr./No.
																				min.	max.		
16000	6x20	4x12	22,3	10	16	9,3	16	15	30,05	40	20	10	20	10	140	140	20	9,75	50	4	90	0	Z174/ 50x 90x 0
																					20	0	
																					130	0	Z174/ 50x130x 0
																					50	0	
27000	6x20	6x16	30,3	13	21	12,3	22	20	45,05	60	34	16	34	15	200	200	34	16,75	80	5,5	117	0	Z174/ 80x117x 0
																					32	0	
																					167	0	Z174/ 80x167x 0
																					75	0	
48000	8x24	8x18	37,5	16	27	15,5	27	25	60,05	80	45	22	45	15	250	250	45	22,25	100	7	145	0	Z174/100x145x 0
																					50	0	
																					195	0	Z174/100x195x 0
																					80	0	

Z178/...

Rundklinkenzug  
Round latch locking unit  
Loquet

max. 100°C

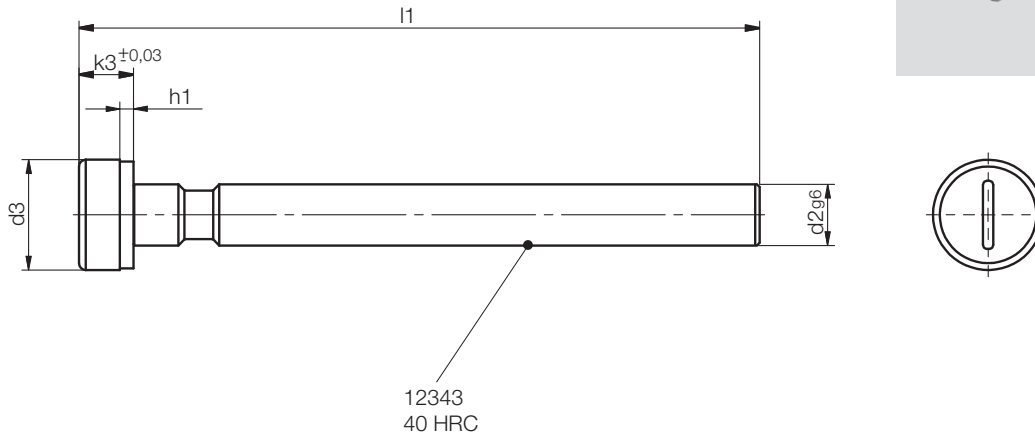


a2	a1	k3	k2	k1	l5	l4	l3	l2	l1	d4	d3	d2	d1	H1	Nr./No.
21	29	8	9	10	100	59	16	38	100	M22x1	16,2	9	<b>22</b>	<b>40</b>	Z178/22x40
24	32	9	10	11	117	72	17	41	120	M26x1	18,8	10,4	<b>26</b>	<b>55</b>	26x55

Z1781/...

Zugbolzen  
Pulling rod  
Tige de traction

max.100°C



h1	k3	d3	d2	l1	Nr./No.
2	8	16,2	9	100	Z1781/ 9 x100
2,5	9	18,8	10,4	120	10,4x120

4

