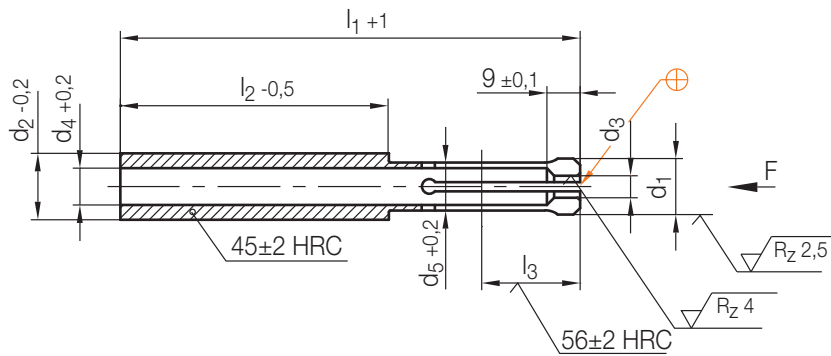


Z 163/...

Rückdruckhülse
 Pressure sleeve
 Rappel anticipé d'éjection
 Mat.: 1.2826

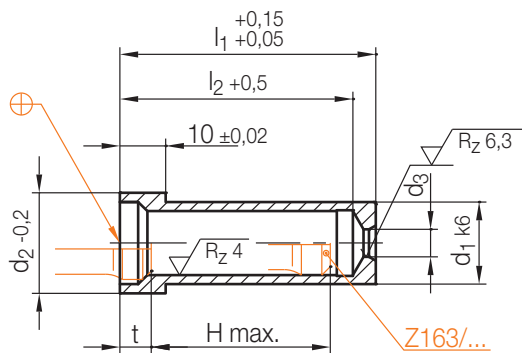


max. F[N]	l ₃	l ₂	d ₁	d ₂	d ₄	d ₅	d ₃	l ₁	Nr./No.
12000	20	73	16	18	10	13	6	125	Z 163/ 6x125
20000	25	100	20	24	12,5	17	10	160	10x160

4

Z 164/...

Rückdruckbuchse
 Bush
 Tige
 Mat.: 1.2080/60 + 2 HRC



H = Hub / stroke / course

max. H	t	l ₂	d ₂	d ₁	d ₃	l ₁	Nr./No.
24	6,7	31	22	18	6	36	Z 164/6x36
34		41				46	46
44		51				56	56

max. H	t	l ₂	d ₂	d ₁	d ₃	l ₁	Nr./No.
23	6,7	30	29	24	10	36	Z 164/10x36
33		40				46	46
43		50				56	56
63		70				76	76