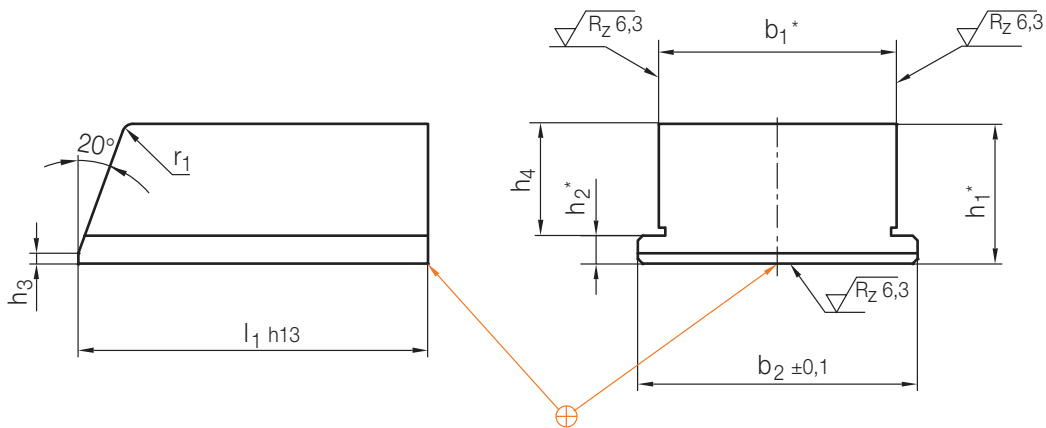
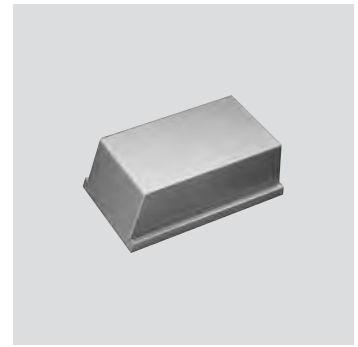


Z 180/...

Schieber
Slide
Coulisseau

Mat.: 1.2767/1.2343/Toolox 44



Toleranzen *			
Mat.:	b ₁	h ₁	h ₂
1.2343	+0,3	+0,3	+0,3
1.2767	+0,2	+0,2	+0,2
TOOLOX 44	g6	+0,2 +0,1	g6

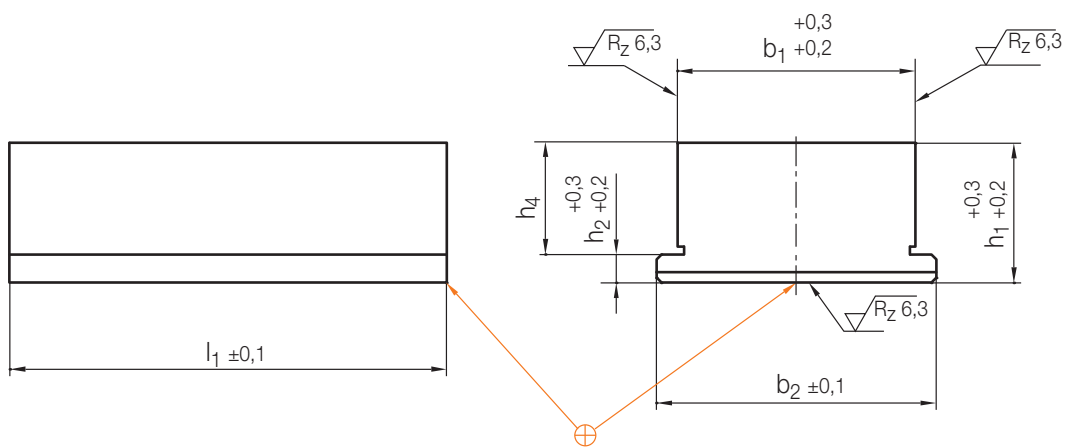
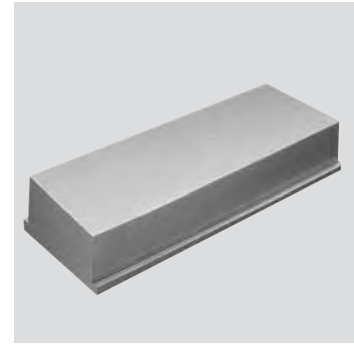
4

r ₁	h ₃	h ₂	b ₂	h ₄	h ₁	l ₁	b ₁	Mat.			Nr./No.				
								1.2343ESU	1.2767	Toolox 44					
1,5	1,5	4	26	8	12	40	20	x	x	x	Z 180/12x 40x 20 /Mat				
							25	x	x	x	25				
							40	x	x	x	40				
			26				12	16	50	63	x	x	x	63	Z 180/16x 50x 20 /Mat
										20	x	x	x	25	
										25	x	x	x	40	
										40	x	x	x	63	
										63	x	x	x	63	
										69	x	x	x	63	
2	2	5	46	15	20	63	40	x	x	x	Z 180/20x 63x 40 /Mat				
							63	x	x	x	63				
							80	x	x	x	80				
			46				20	25	71	40	x	x	x	40	Z 180/25x 71x 40 /Mat
										63	x	x	x	63	
										80	x	x	x	80	
										86	x	x	x	80	
										86	x	x	x	80	
										86	x	x	x	80	
3	3	6	71	26	32	100	63	x	x	x	Z 180/32x 100x 63 /Mat				
							80	x	x	x	80				
							100	x	x	x	100				
			71				34	40	100	63	x	x	x	63	Z 180/40x 100x 63 /Mat
										80	x	x	x	80	
										100	x	x	x	100	
										108	x	x	x	100	
										108	x	x	x	100	
										108	x	x	x	100	
4	4	8	90	42	50	112	80	x	x	x	Z 180/50x 112x 80 /Mat				
							100	x	x	x	100				
							125	x	x	x	125				
			90				55	63	112	80	x	x	x	80	Z 180/63x 112x 80 /Mat
										100	x	x	x	100	
										125	x	x	x	125	
										135	x	x	x	125	
										135	x	x	x	125	
										135	x	x	x	125	

Z 1800/...

Schieber, ablängbar
 Slide, can be cut as required
 Coulisseau, pouvant être raccourci

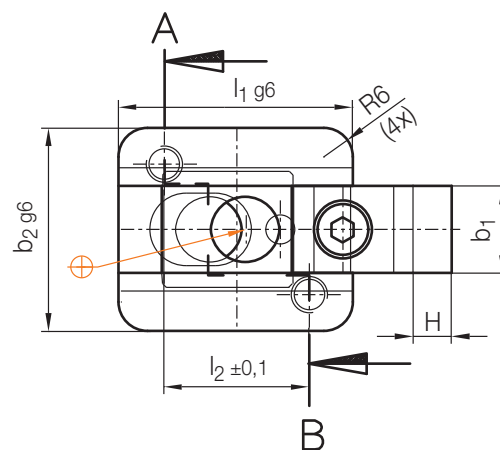
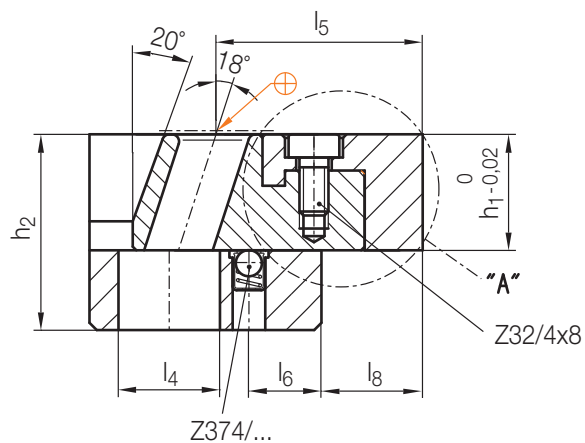
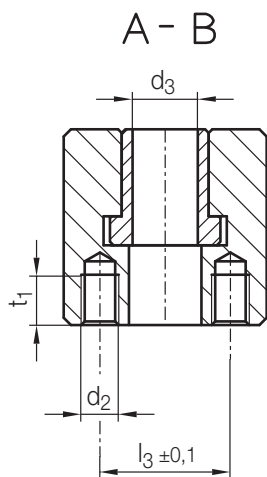
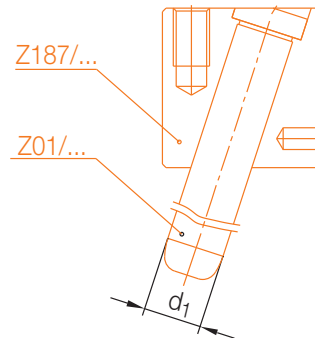
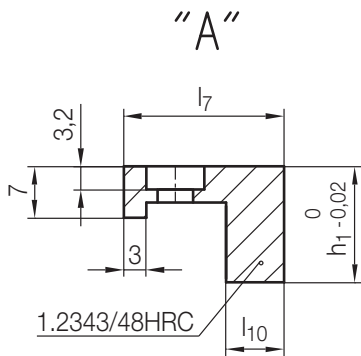
Mat.: 1.2343/1.2767



h ₂	b ₂	h ₄	h ₁	l ₁	b ₁	Mat.		Nr./No.
						1.2343ESU	1.2767	
4	26	12	16	200	20	x	x	Z 1800/16x200x 20 / Mat
	31				25	x	x	25
	46				40	x	x	40
	69				63	x	x	63
5	46	20	25	200	40	x	x	Z 1800/25x200x 40 / Mat
	69				63	x	x	63
	86				80	x	x	80
6	71	34	40	250	63	x	x	Z 1800/40x250x 63 / Mat
	88				80	x	x	80
	108				100	x	x	100
8	90	55	63	250	80	x	x	Z 1800/63x250x 80 / Mat
	110				100	x	x	100
	135				125	x	x	125

Z181/...

Schiebereinheit
Mould slide unit
Coulisse



4

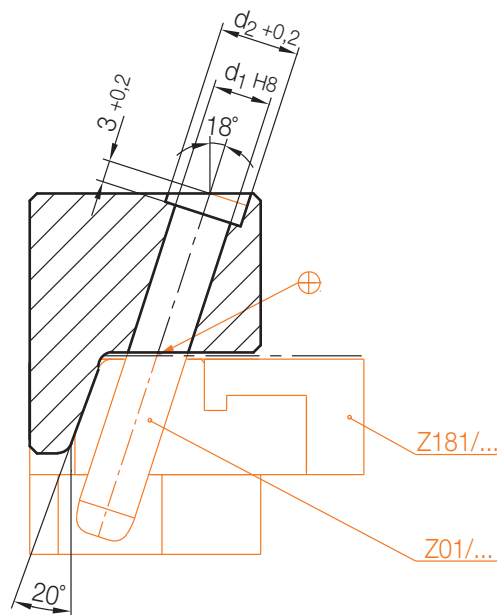
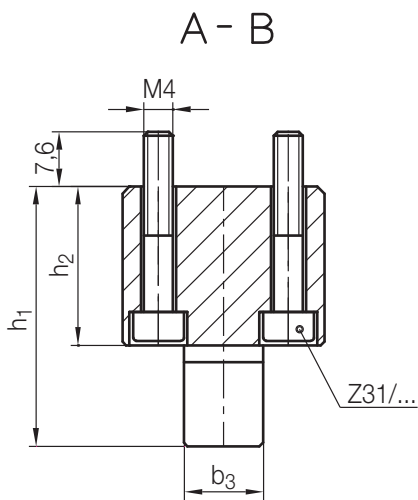
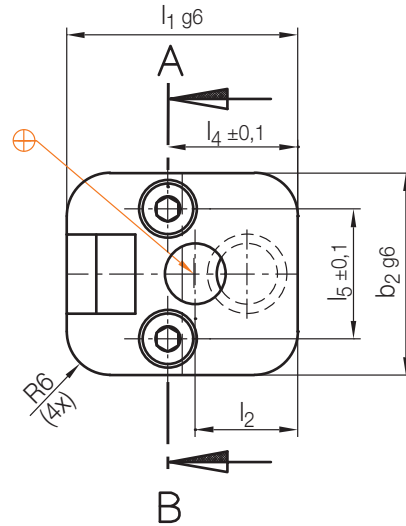
H = Hub / Stroke / Course

Z01/...	t ₁	d ₂	d ₃	h ₂	l ₁₀	l ₈	l ₇	l ₆	l ₅	l ₄	l ₃	l ₂	l ₁	H	b ₂	d ₁	b ₁	h ₁	Nr./No.
8x50	8	M5	9	27	8	14,3	22	10	28,5	14	18	20	32	5	28	8	12	16	Z181/ 8x12x16
10x60	10	M6	11	32	10	15,3	25	12	32,5	17	20	29	40	6,5	32	10	16	18	10x16x18

Z1810/...

Verriegelung
Locking heel
Verrou

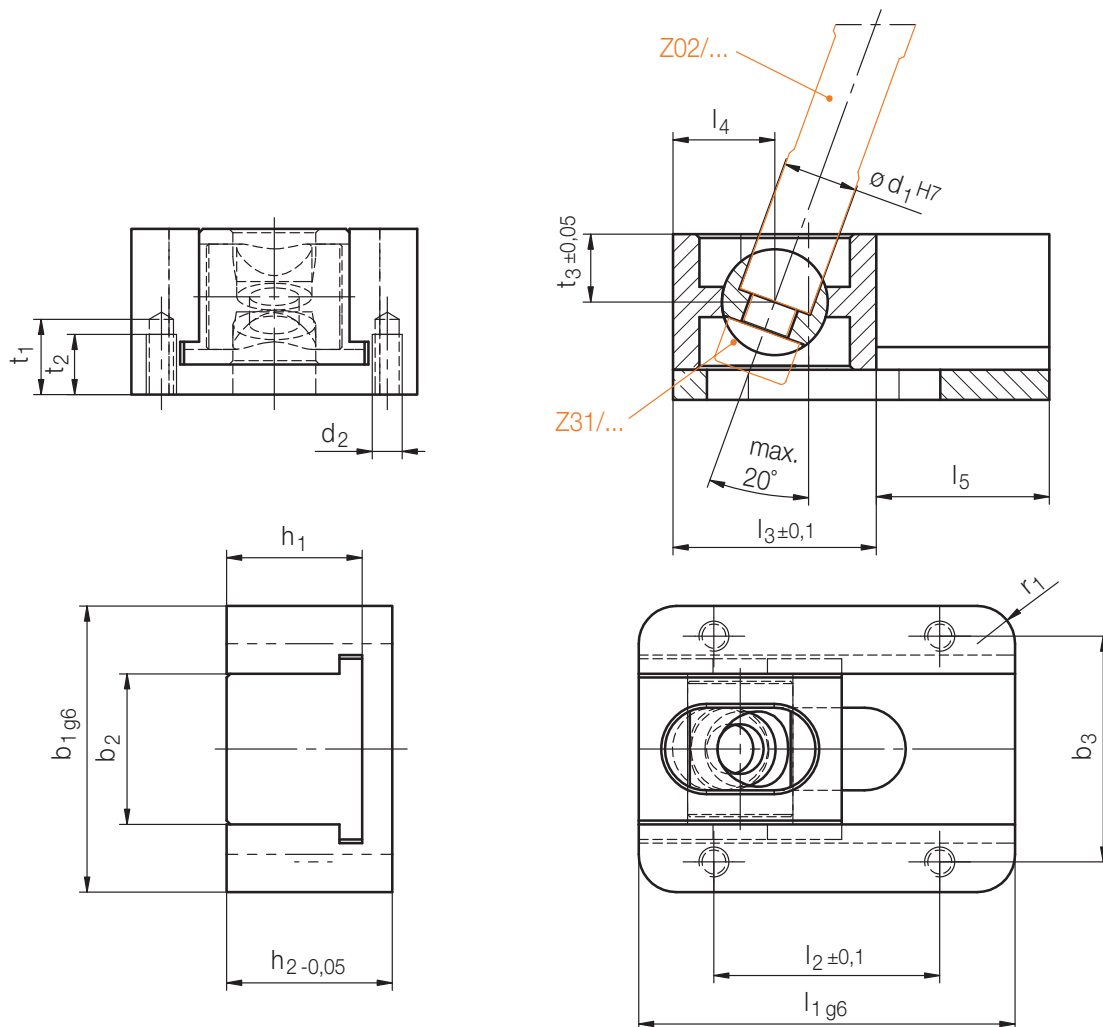
Mat.: 1.2842/53 HRC



Z31/...	h ₂	h ₁	l ₄	l ₂	l ₁	b ₃	l ₅	b ₂	d ₂	d ₁	Nr./No.
Z31/4x25	22	36	18	14,2	32	11	18	28	11	8	Z1810/ 8
Z31/4x30	27	44	22	17,2	40	15	20	32	13	10	10

Z1811/...

Schrägschieber
Inclined sliding carriage
Coulisseau incliné

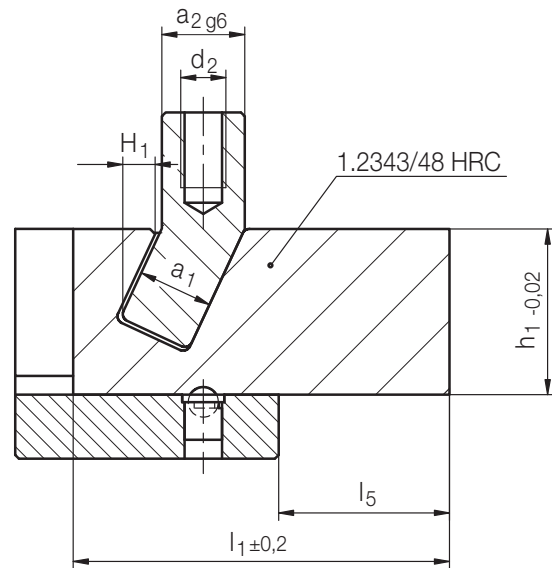
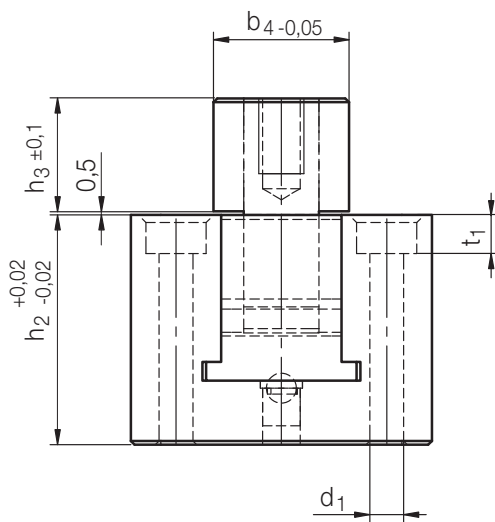


4

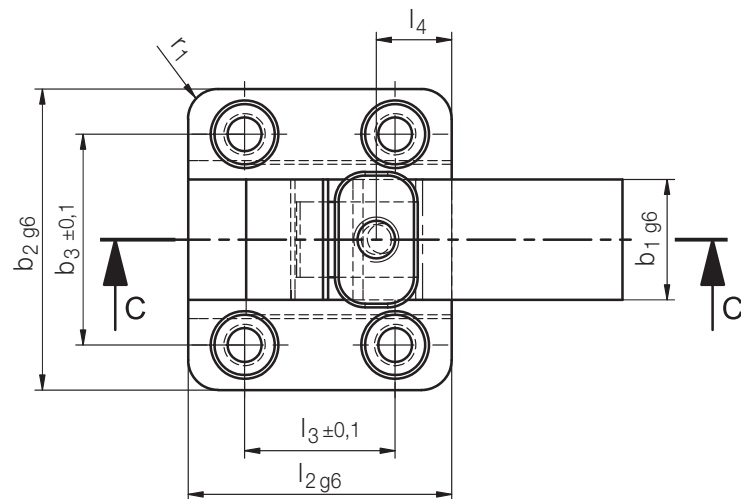
r ₁	t ₃	t ₂	t ₁	l ₅	l ₄	l ₃	l ₂	l ₁	h ₂	h ₁	d ₂	b ₃	b ₂	b ₁	d ₁	Nr./No.
5	8,5	10	12	23	13,5	27	30	50	25	20	M5	32	20	40	10	Z1811/10
6	12,5	12	14	35	17,5	35	50	70	35	28	M6	39	25	48	14	14

Z1812/...

Schiebereinheit
Slide unit
Coulisse



$H_1 = \text{Hub} / \text{Stroke} / \text{Course}$

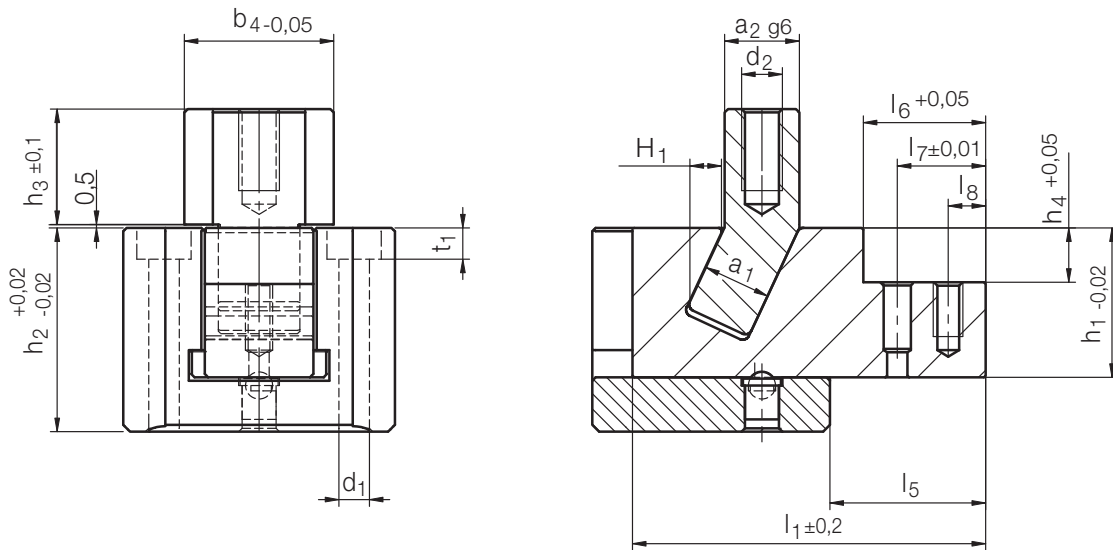


4

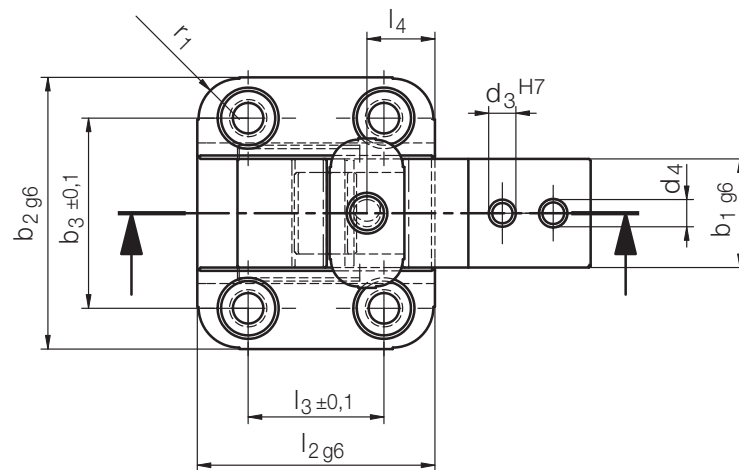
t_1	r_1	l_5	l_4	l_3	l_2	l_1	d_2	d_1	h_3	h_2	b_4	b_3	b_2	a_2	H_1	a_1	b_1	h_1	Nr./No.
4,6	6	22,9	10	20	35	52	M6	4,5	17	30	22	28	40	11	4,6	10	16	22	Z1812/10x16x22
6,8	7	33,8	15	35	50	75	M8	6,6	20	40	30	40	55	13	7	12	25	30	12x25x30

Z1813/...

Schiebereinheit
Slide unit
Coulisse



$H_1 = \text{Hub / Stroke / Course}$

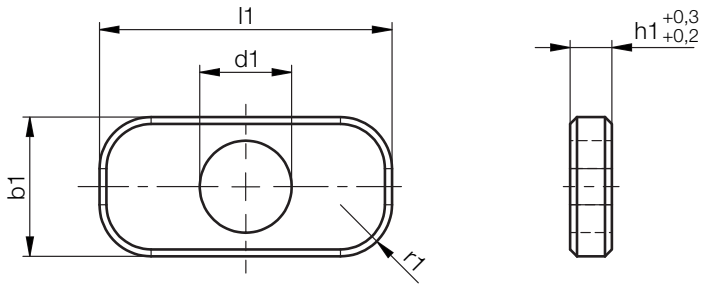


t ₁	r ₁	l ₈	l ₇	l ₆	l ₅	l ₄	l ₃	l ₂	l ₁	d ₄	d ₃	d ₂	d ₁	h ₄	h ₃	h ₂	b ₄	b ₃	b ₂	a ₂	H ₁	a ₁	b ₁	h ₁	Nr./No.
4,6	6	5,5	13	18	22,9	10	20	35	52	M4	4	M6	4,5	8	17	30	22	28	40	11	4,6	10	16	22	Z1813/10x16x22
6,8	7	7	16	20	26,8	15	35	50	68	M6	5	M8	6,6	10	20	40	30	40	55	13	7	12	25	30	12x25x30

Z1814/...

Distanzscheibe
Spacer
Entretoise

Mat.: 1.0715/1.7131 50 ±2 HRC



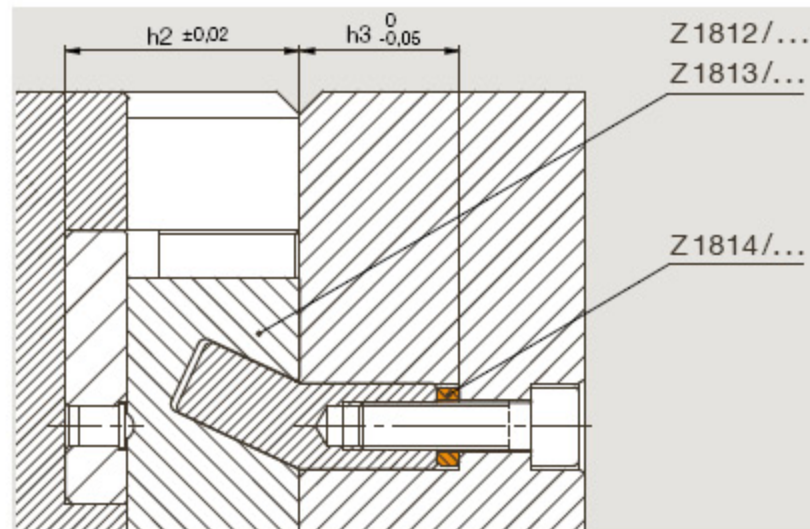
r1	d1	b1	l1	h1	Nr./No.
3,7	6,6	10	21	3	Z 1814/10x21x3
	9	12	29		12x29x3

Die neue HASCO Distanzscheibe Z1814/... dient zur einfachen Abstimmung des Verriegelungsstückes der Schiebereinheiten Z1812/... und Z1813/...

Besondere Merkmale

- Individuelle Höhenabstimmung ohne Demontage des Schiebers
- Ausgleich von Fertigungstoleranzen
- Einfaches Abstimmen von Ersatzteilen
- Abgestimmt auf die Schiebereinheiten Z1812/... und Z1813/...

Einbaubeispiel



The new HASCO spacer Z1814/... is used for the simple adjustment of the heel block on mould slide units Z1812/... and Z1813/...

Special Features

- Individual height adjustment without dismantling the slide
- Offsetting production tolerances
- Simple coordination of spare parts
- Matched to slide units Z1812/... and Z1813/...

Mounting example

La nouvelle entretoise HASCO Z1814/... est utile pour l'ajustement en hauteur des unités de tiroir Z1812/... et Z1813/...

Caractéristiques particulières

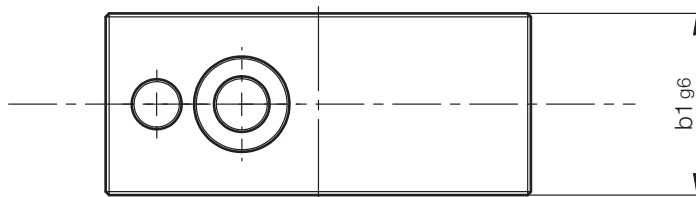
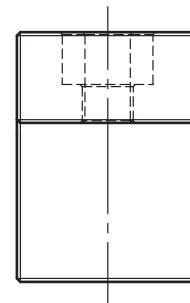
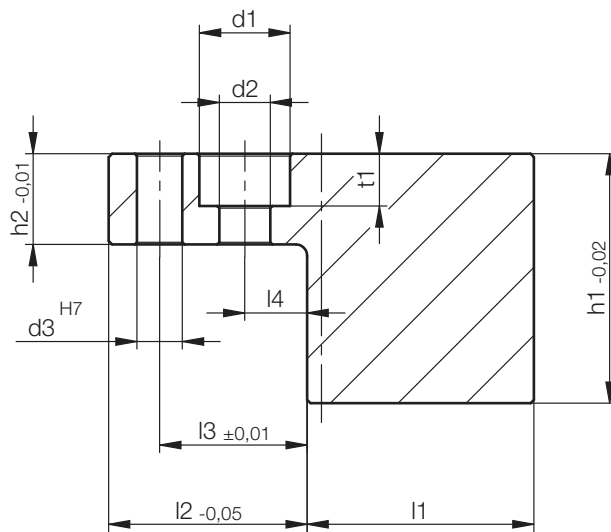
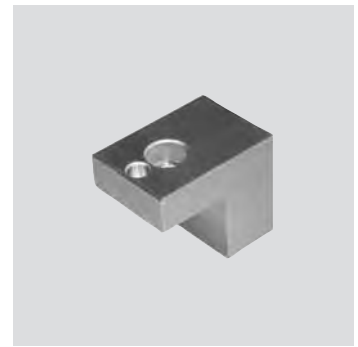
- Ajustage en hauteur sans démontage du tiroir
- Tolérances de finition identiques
- Ajustement simple d'éléments de rechange
- Adapté aux unités de coulisse Z1812/... et Z1813/...

Exemple de montage

h2	h3	Nr./No.	für/for/pour
30	20,5	Z 1814/10x21x3	Z1812/10x16x22 Z1813/10x16x22
40	23,5	Z 1814/12x29x3	Z1812/12x25x30 Z1813/12x25x30

Z 18130/...

Haltestück
Clamp
Bride de serrage



4

Neu / New / Nouveau

t1	d3	d2	d1	h2	h1	l4	l3	l2	b1	l1	Mat.			Nr./No.
											1.2343ESU	Toolox33	Toolox44	
4,6	4	4,5	8	8	22	5,5	13	17,8	16	20	X	X	X	Z 18130/ 16x20/Mat.
5,7	5	5,5	10	10	30	7	16	19,8	25	40	X	X	X	25x40/Mat.

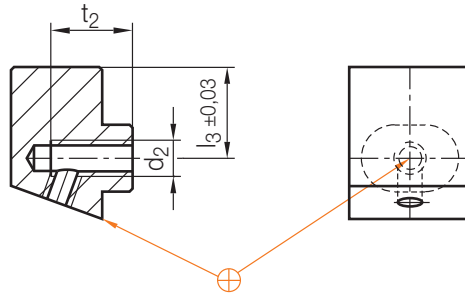
Z 182/...

Schiebverriegelung, einseitig
 Locking heel, single sided
 Verrou du coulisseau simple

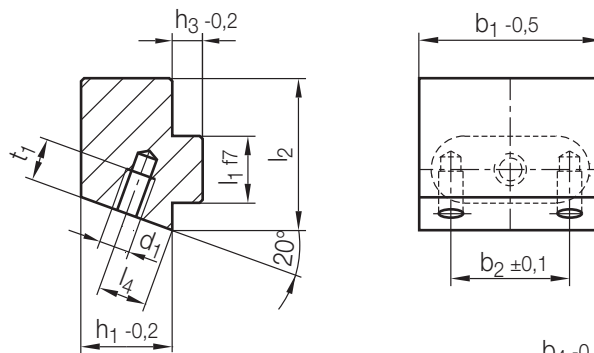
Mat.: 1.2162/60 HRC



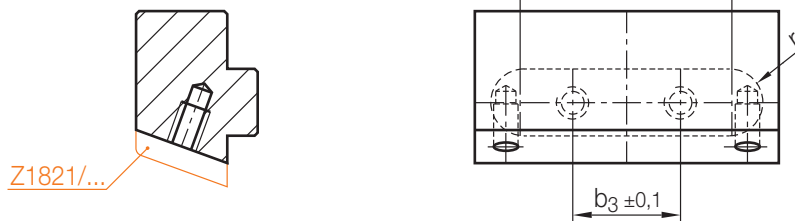
Typ 1



Typ 2



Typ 3



Typ	r	t ₂	t ₁	d ₂	d ₁	l ₄	l ₃	l ₂	l ₁	b ₄	b ₃	b ₂	h ₃	h ₁	Z 180/... h ₁	b ₁	Nr./No.
1	5,8	10	5	M 6	M 4	4,5	12	22	12	5	—	—	5	11	12	18	Z 182/12x18
22																22	
30																30	
2	5,8	10	7	M 6	M 4	4,5	12	22	12	5	—	—	5	11	12	50	50
34																34	
36																36	
1	5,8	13	5	M 8	M 4	7	16	28	15	8,5	—	—	15	15	16	18	Z 182/16x18
22																22	
30																30	
2	5,8	13	7	M 8	M 4	7	16	28	15	8,5	—	—	15	15	16	50	50
34																34	
36																36	
1	7,8	15	5	M 10	M 6	10	24	40	16	12	—	16	6	19	20	30	Z 182/20x30
38																38	
53																53	
2	7,8	15	5	M 10	M 6	10	24	40	16	12	—	16	6	19	20	38	38
53																53	
39																39	
1	7,8	14	5	M 10	M 6	13	27	45	16	12	—	16	8	24	25	30	Z 182/25x30
38																38	
53																53	
2	7,8	14	5	M 10	M 6	13	27	45	16	12	—	16	8	24	25	38	38
53																53	
39																39	
1	9,8	15	10	M 12	M 6	17	30	50	20	16	—	18	9	31	32	38	Z 182/32x38
50																50	
71																71	
2	9,8	15	10	M 12	M 6	17	30	50	20	16	—	18	9	31	32	71	71
50																50	
30																30	
1	9,8	15	10	M 12	M 6	17	30	50	20	16	—	18	11	39	40	38	Z 182/40x38
50																50	
71																71	
2	9,8	15	10	M 12	M 6	17	30	50	20	16	—	18	11	39	40	50	50
71																71	
30																30	
1	12,3	18	10	M 12	M 12	26	39	63	25	21	—	30	14	49	50	50	Z 182/50x50
63																63	
85																85	
2	12,3	18	10	M 12	M 12	26	39	63	25	21	—	30	14	49	50	63	63
85																85	
34																34	
3	12,3	18	10	M 12	M 12	26	39	63	25	21	—	30	14	49	50	85	85
63																63	
43																43	

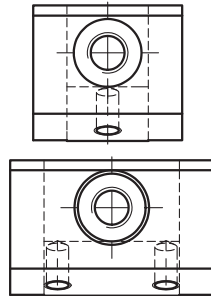
Z 1820/...

Schieberverriegelung, einseitig
 Locking heel, single sided
 Verrou du coulisseau simple

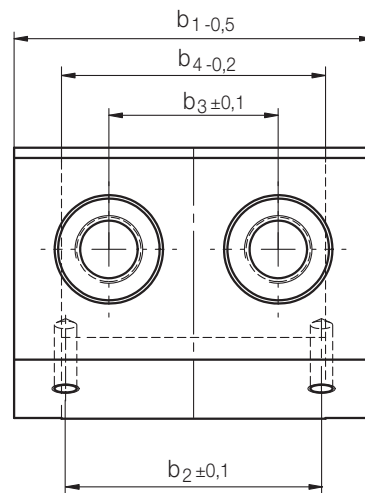
Mat.: 1.2162/60 HRC



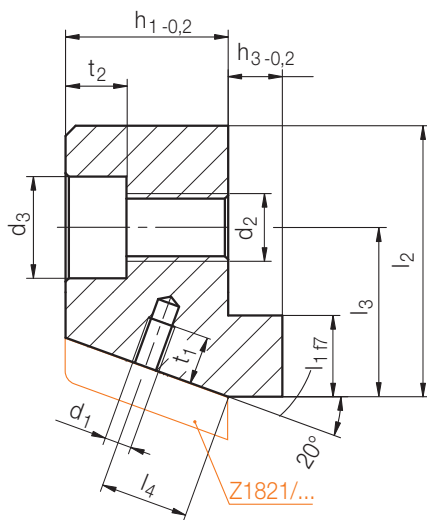
Typ 1



Typ 2



Typ 3



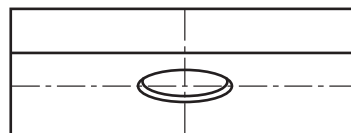
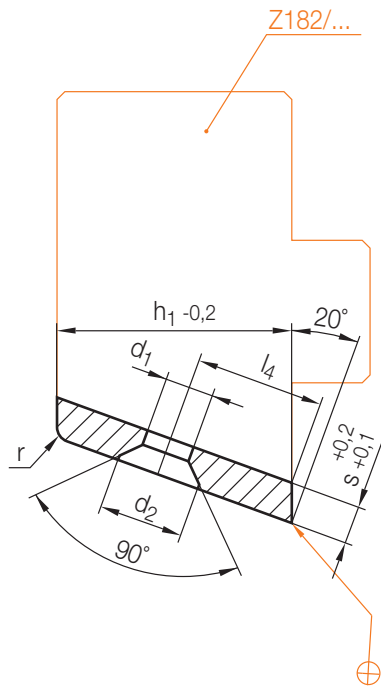
4

Typ	t ₂	t ₁	d ₃	d ₂	d ₁	l ₄	l ₃	l ₂	l ₁	b ₄	b ₃	b ₂	h ₃	h ₁	Z180/... h ₁	b ₁	Nr./No.
1	5,7	5	10	M 6	M4	4,5	13	20	8	10	-	-	5	11	12	18	Z 1820/ 12x 18
12										-	-	22				22	
20										-	16	30				30	
2	6,8	7	11	M 8	7	17	25	10	10	10	-	-	6	19	20	18	Z 1820/ 16x 18
12										-	-	22				22	
18										-	16	30				30	
3	9	15	M10	10	20	32	12	16	12	16	-	16	8	24	25	30	Z 1820/ 20x 30
24										-	24	38				38	
39										25	39	53				53	
2	13	25	40	16	-	16	8	24	24	16	-	16	11	31	32	30	Z 1820/ 25x 30
24										-	24	38				38	
39										25	39	53				53	
3	17	28	45	16	20	-	18	9	31	20	-	18	14	49	50	38	Z 1820/ 32x 38
32										20	30	50				50	
53										35	51	71				71	
2	21	30	50	20	-	18	11	39	40	20	-	18	14	49	50	38	Z 1820/ 40x 38
32										20	30	50				50	
53										39	51	71				71	
2	26	34	56	20	28	-	30	14	49	28	-	30	14	49	50	50	Z 1820/ 50x 50
41										30	43	63				63	
63										45	65	85				85	

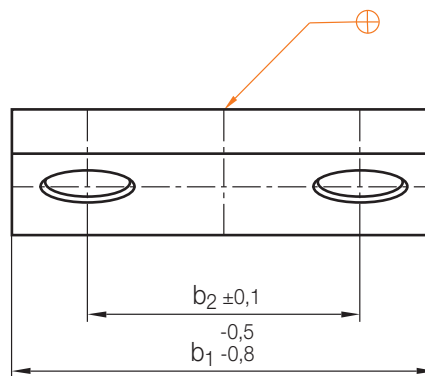
Z 1821/...

Druckplatte
Wear plate
Plaque de pression

Mat.: 1.2842/53 HRC



Typ 1



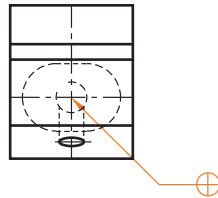
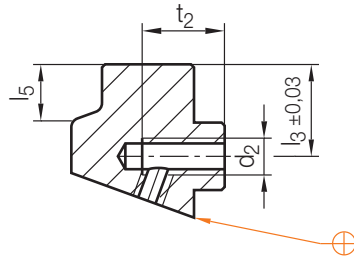
Typ 2

Typ	r	d ₂	d ₁	l ₄	b ₂	h ₁	Z 180/... h ₁	s	b ₁	Nr./No.
1	1,5	8,3	4,3	4,5	—	11	12	4	18	Z 1821/12x4x18
2					—				22	22
					16				30	30
1				7	—	15	16	18	Z 1821/16x4x18	
					—			22	22	
					16			30	30	
2	10	16	19	20	30	Z 1821/20x4x30				
		24			38	38				
		39			53	53				
1	13	16	24	25	5	30	Z 1821/25x5x30			
		24				38	38			
		39				53	53			
2	2	12,4	6,4	17	18	31	32	6	38	Z 1821/32x5x38
					30				50	50
					51				71	71
1	21	18	39	40	6	38	Z 1821/40x6x38			
						50	50	50		
						71	71	71		
2	26	30	49	50	6	50	Z 1821/50x6x50			
						63	63	63		
						85	85	85		

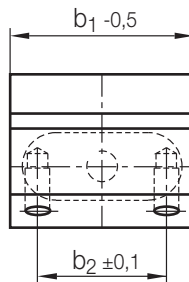
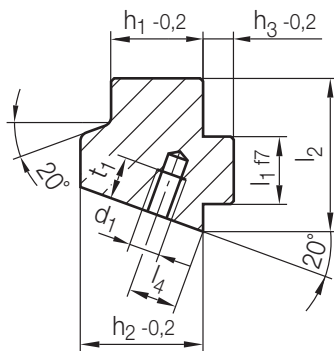
Z 183/...

Schiebverriegelung, doppelseitig
 Locking heel, double sided
 Verrau du coulisseau double

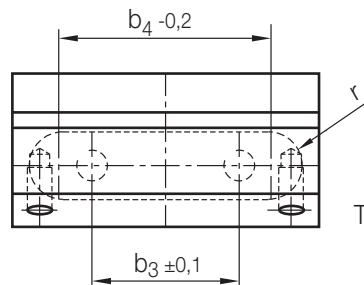
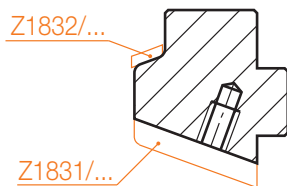
Mat.: 1.2162/60 HRC



Typ 1



Typ 2



Typ 3

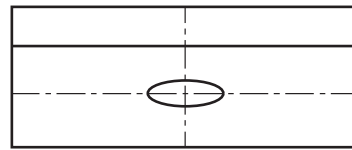
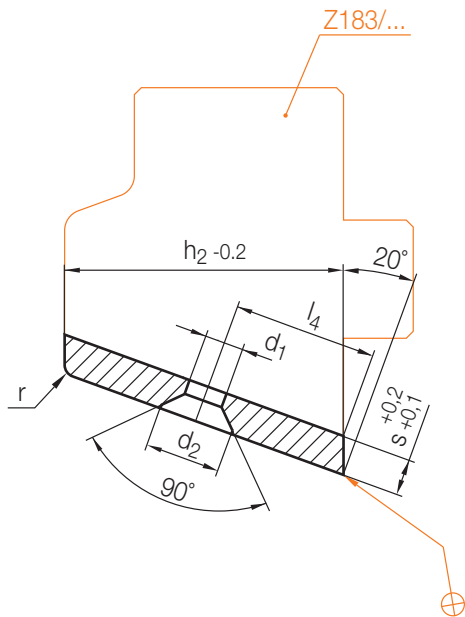
4

Typ	r	t ₂	t ₁	d ₂	d ₁	b ₄	b ₃	b ₂	l ₅	l ₄	l ₃	l ₂	l ₁	h ₃	h ₁	Z180/... h ₁	h ₂	b ₁	Nr./No.					
1	5,8	12	5	M 8	M 4	8,5	—	—	14,9	12	20	32	12	5	15	16	23	22	Z 183/16/23x22					
2		7				14	—	16															30	
3						34	24	36																50
2	7,8	15	10	M 10	M 6	12	—	16	18,4	16	24	40	16	6	19	20	31	30	Z 183/20/31x30					
3						18	—	24																38
3						33	25	39																
2			10	M 6	M 6	12	—	16	21,4	19	27	45		8	24	25	36	30	Z 183/25/36x30					
3						18	—	24																38
3						33	25	39																
2	9,8		10	M 6	M 6	16	—	18	22,5	24	30	50	20	9	31	32	46	38	Z 183/32/46x38					
3						26	20	30																50
3						47	35	51																
2			10	M 6	M 6	16	—	18	24,5	28	34	56		11	39	40	54	38	Z 183/40/54x38					
3						26	20	30																50
3						47	35	51																
2	12,3	18	10	M 12	M 6	21	—	30	26,2	35	39	63	25	14	49	50	66	50	Z 183/50/66x50					
3						34	27	43																63
3						56	45	65																
2	14,8		10	M 12	M 6	16	—	30	36,2	42	51	80	30	16	62	63	79	50	Z 183/63/79x50					
3						29	27	43																63
3						51	45	65																

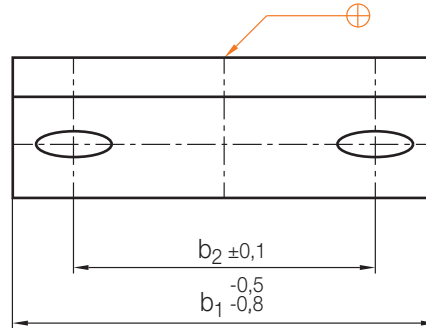
Z 1831/...

Druckplatte
Wear plate
Plaque de pression

Mat.: 1.2842 / 53 HRC



Typ 1

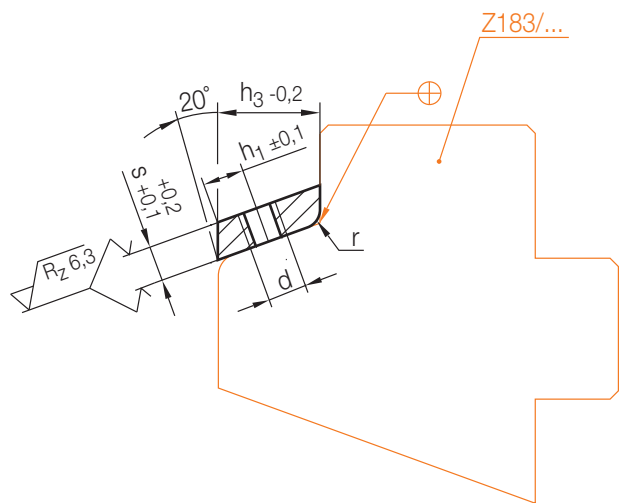
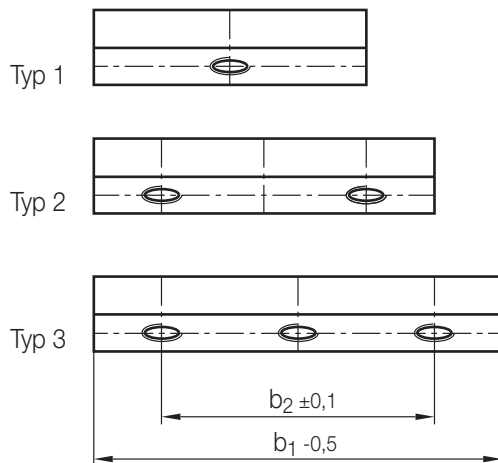


Typ 2

Typ	r	d ₂	d ₁	l ₄	b ₂	h ₂	s	b ₁	Nr./No.		
1	1,5	8,3	4,3	12	—	23	4	22	Z 1831/23x4x22		
2					30			30			
					50			50			
16				16	31	30	Z 1831/31x4x30				
				38			38				
				53			53				
19				16	36	5	30	Z 1831/36x5x30			
				38			38				
				53			53				
2				12,4	6,4	24	18	46	6	38	Z 1831/46x5x38
							50			50	
							71			71	
	28	18	54				38	Z 1831/54x6x38			
		50					50				
		71					71				
	35	30	66			6	50	Z 1831/66x6x50			
		63					63				
		85					85				
	42	30	79			6	50	Z 1831/79x6x50			
		63					63				
		85					85				

Z 1832/...

Druckplatte
Wear plate
Plaque de pression
Mat.: 1.2842/53 HRC



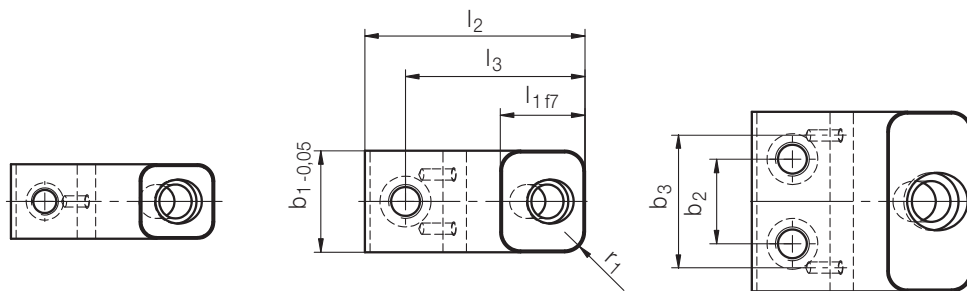
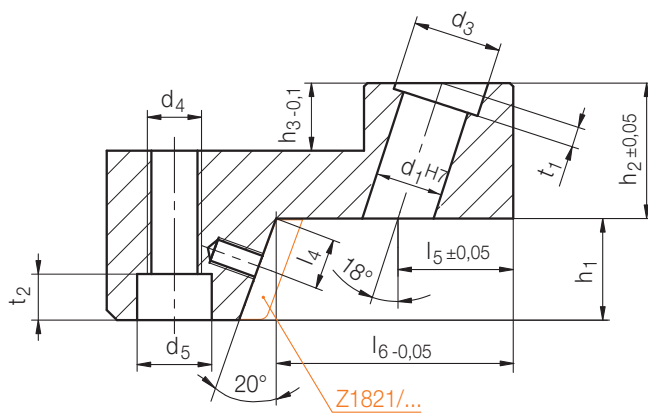
4

Typ	r	b ₂	d	h ₁	h ₃	s	b ₁	Nr./No.			
1	1,5	—	M4	3,5	8	4	22	Z 1832/ 8x4x22			
2		18					30	30			
		30					50	50			
2	2	18	M5	5,5	12	5	30	Z 1832/ 12x5x30			
		24					38	38			
		35	53				53				
		24	M6				7	15	6	38	Z 1832/ 15x6x38
		34								50	50
50	71	71									
3	50	8	17	50	63	63				85	
2	34										50
42	63						63				
3	65						85	85			

Z1840/...

Schieberrriegelung mit Aufnahme
 Locking heel with retainer
 Verrou du coulisseau avec logement

Mat.: 1.2162/58 HRC



Typ 1

Typ 2

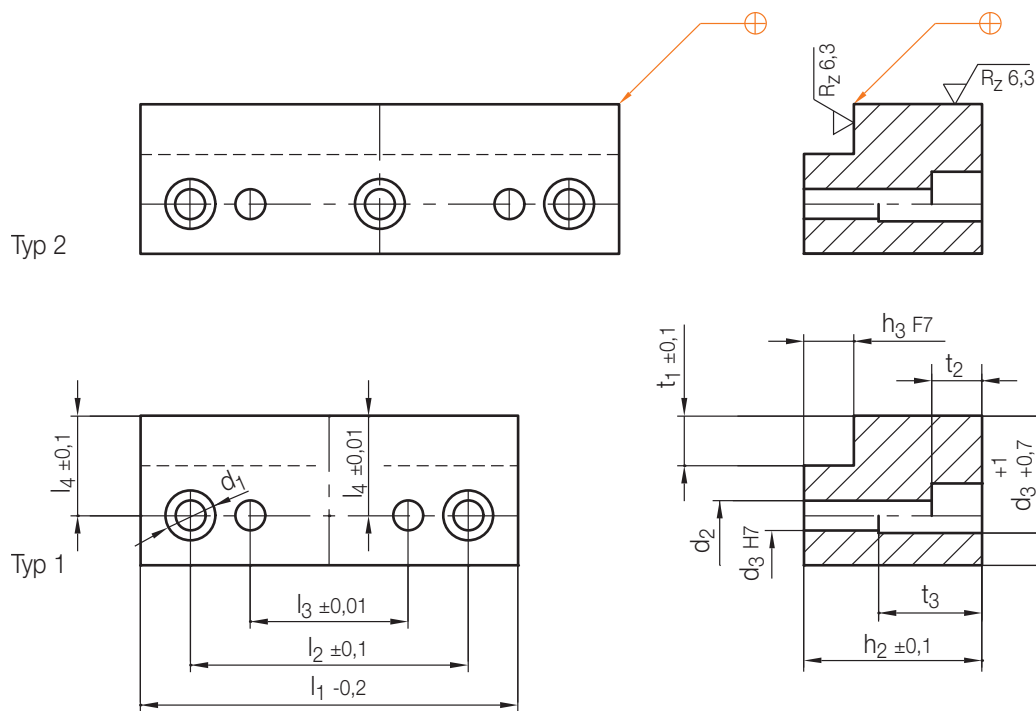
Typ 3

Typ	r ₁	l ₆	l ₅	l ₄	l ₃	l ₂	l ₁	t ₂	t ₁	d ₅	d ₄	d ₃	b ₃	b ₂	h ₃	h ₂	h ₁	Z180/... h ₁	b ₁	d ₁	Nr./No.
1	5	32	17	4,5	43	50	22	5,7	3	10	M 6	13	-	-	8	18	11	12	22	10	Z 1840/12x22x10
2			16						6			17	16	-					30	12	30x12
3													36	24					50		50x12
1		35	19	7	50	60	25	6,8		11	M 8		-	-	10	22	15	16	22		Z 1840/16x22x12
2													16	-					30		30x12
3			18						8			19	36	24					50	14	50x14
2	6		19	10	54	65		9	6	15	M10	17	16	-			19	20	30	12	Z 1840/20x30x12
													24	-					38		38x12
3			18									19	39	25					53	14	53x14
2		38	19,5	13	58	71			8				16	-	12	26	24	25	30		Z 1840/25x30x14
													24	-					38		38x14
3													39	25					53		53x14

Z 185/...

Führungsleiste
Guide strip
Barre de guidage

Mat.: 1.2842/58 HRC

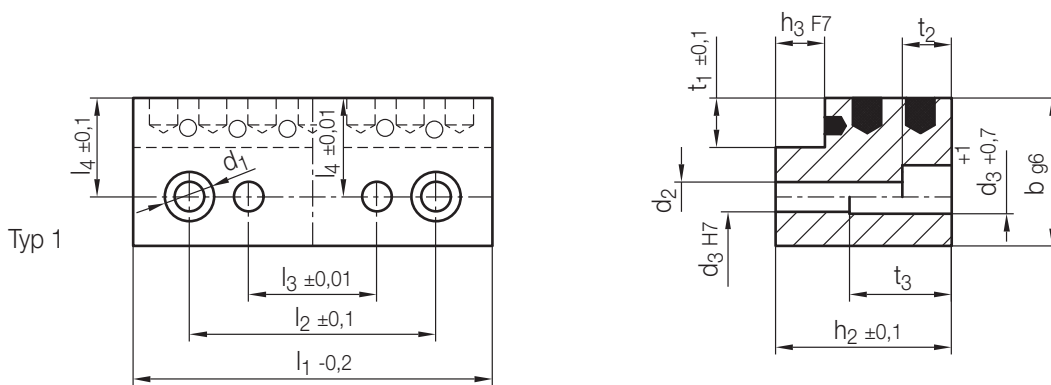
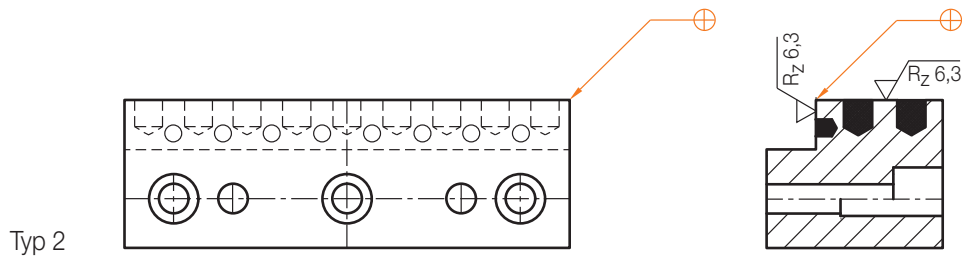


4

Typ	t ₃	t ₂	t ₁	d ₃	d ₂	d ₁	l ₄	l ₃	l ₂	h ₃	h ₂	b	Z 180/... h ₁	l ₁	Nr./No.
1	—	5,7	5	5	5,5	10	9,5	14	34	4	11	16	12	50	Z 185/16x12x 50
								35	55					71	71
								54	74					90	90
2	9,5	6,8	6	6,6	11	12	12	40	64	5	19	20	20	80	Z 185/20x20x 80
								60	84					100	100
								85	109					125	125
1	19	9	6	8	9	15	15,5	50	80	6	31	25	32	100	Z 185/25x32x100
								75	105					125	125
								110	140					160	160
2	34	11	7	10	11	18	18	55	95	8	49	30	50	125	Z 185/30x50x125
								90	130					160	160
								130	170					200	200

Z 185 W/...

Führungsleiste, selbstschmierend
 Guide strip, self lubricating
 Barre de guidage, autolubrifiante
 Mat.: 2.0492 / 180 HB

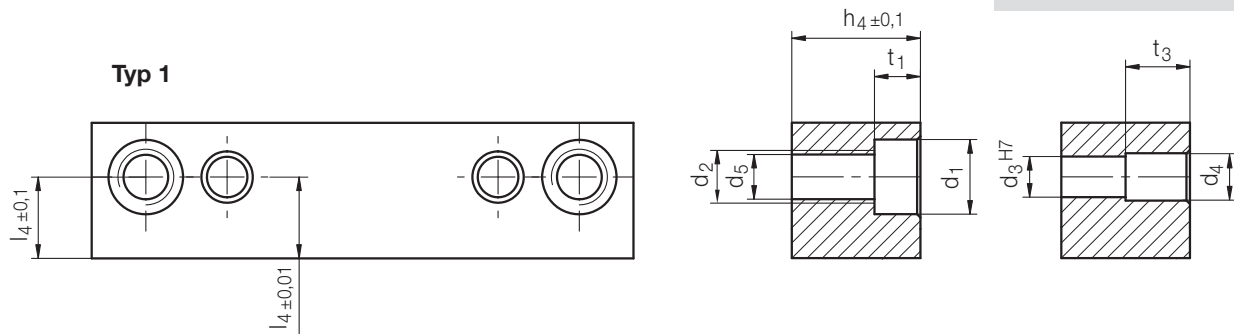


Typ	t ₃	t ₂	t ₁	d ₃	d ₂	d ₁	l ₄	l ₃	l ₂	h ₃	h ₂	b	Z 180/... h ₁	l ₁	Nr./No.
1	—	5,7	5	5	5,5	10	9,5	14	34	4	11	16	12	50	Z 185 W/ 16x12x 50
								35	55					71	71
								54	74					90	90
2	9,5	6,8		6	6,6	11	12	40	64	5	19	20	20	80	Z 185 W/ 20x20x 80
								60	84					100	100
								85	109					125	125
1	19	9	6	8	9	15	15,5	50	80	6	31	25	32	100	Z 185 W/ 25x32x 100
								75	105					125	125
								110	140					160	160
2	34	11	7	10	11	18	18	55	95	8	49	30	50	125	Z 185 W/ 30x50x 125
								90	130					160	160
								130	170					200	200

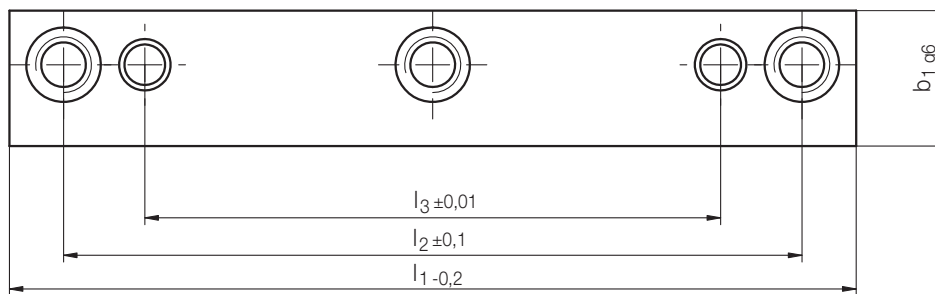
Z 1850/...

Führungsleiste
Guide strip
Barre de guidage

Mat.: 1.2842/58 HRC



Typ 2



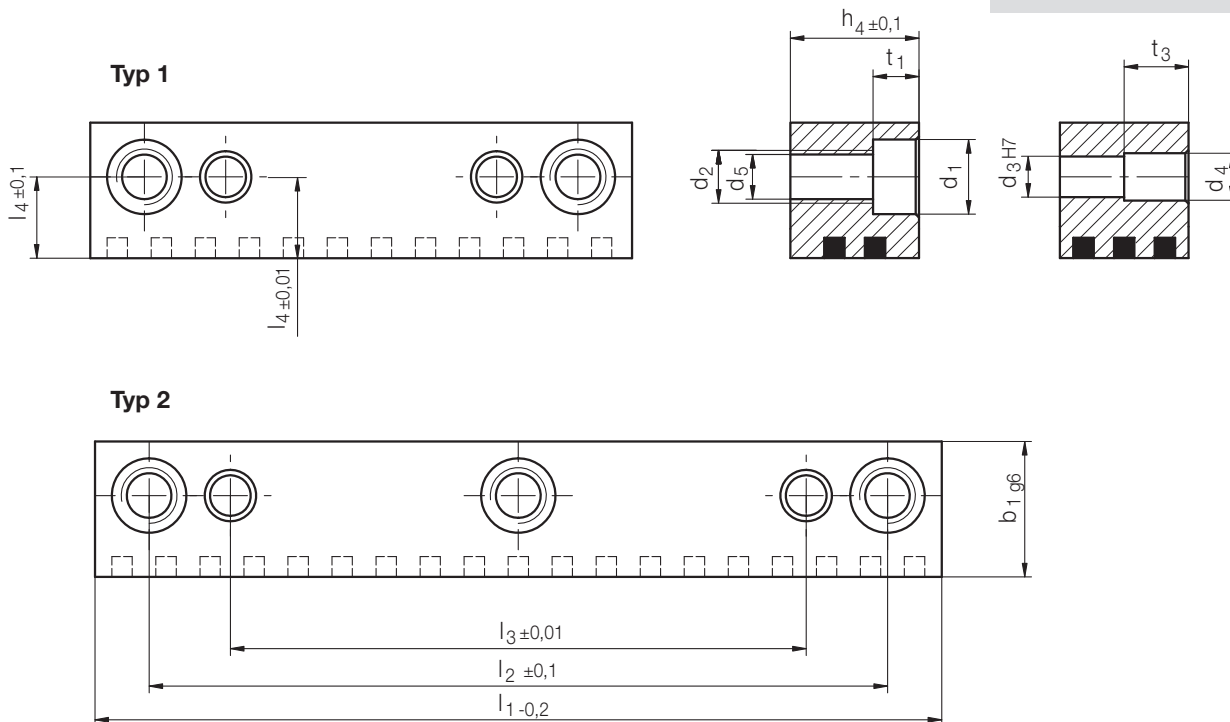
4

Typ	t ₃	t ₁	d ₅	d ₄	d ₃	d ₂	d ₁	l ₄	l ₃	l ₂	b ₁	h ₄	l ₁	Nr./No.
1	-	4	5,3	-	5	M 6	10	9,5	14	34	16	7	50	Z 1850/16x 7x 50
2								35	55	71			Z 1850/16x 7x 71	
								54	74	90			Z 1850/16x 7x 90	
1	3	5,7							14	34	11	50	Z 1850/16x 11x 50	
2								35	55	71			Z 1850/16x 11x 71	
								54	74	90			Z 1850/16x 11x 90	
1	4	6,8	6,8	7	6	M 8	11	12	40	64	20	14	80	Z 1850/20x 14x 80
2								60	84	100			Z 1850/20x 14x 100	
								85	109	125			Z 1850/20x 14x 125	
1	9								40	64	19	80	Z 1850/20x 19x 80	
2								60	84	100			Z 1850/20x 19x 100	
								85	109	125			Z 1850/20x 19x 125	
1	12	9	8,5	9	8	M10	15	15,5	50	80	25	25	100	Z 1850/25x 25x 100
2								75	105	125			Z 1850/25x 25x 125	
								110	140	160			Z 1850/25x 25x 160	
1	20								50	80	33	100	Z 1850/25x 33x 100	
2								75	105	125			Z 1850/25x 33x 125	
								110	140	160			Z 1850/25x 33x 160	
1	26	11	10,5	11	10	M12	18	18	55	95	30	41	125	Z 1850/30x 41x 125
2								90	130	160			Z 1850/30x 41x 160	
								130	170	200			Z 1850/30x 41x 200	
1	39								55	95	54	125	Z 1850/30x 54x 125	
2								90	130	160			Z 1850/30x 54x 160	
								130	170	200			Z 1850/30x 54x 200	

Z 1850W/...

Führungsleiste, selbstschmierend
 Guide strip, self lubricating
 Barre de guidage, autolubrifiante

Mat.: 2.0492 / 180 HB



Typ	t ₃	t ₁	d ₅	d ₄	d ₃	d ₂	d ₁	l ₄	l ₃	l ₂	b ₁	h ₄	l ₁	Nr./No.
1	-	4	5,3	6	5	M 6	10	9,5	14	34	16	7	50	Z 1850W/16x 7x 50
									35	55			71	71
									54	74			90	90
1	3	5,7	6,8	7	6	M 8	11	12	14	34	20	14	50	Z 1850W/16x11x 50
									35	55			71	71
									54	74			90	90
1	4	6,8	6,8	7	6	M 8	11	12	40	64	25	14	80	Z 1850W/20x14x 80
									60	84			100	100
									85	109			125	125
1	9	9	8,5	9	8	M10	15	15,5	40	64	25	19	80	Z 1850W/20x19x 80
									60	84			100	100
									85	109			125	125
1	12	9	8,5	9	8	M10	15	15,5	50	80	25	25	100	Z 1850W/25x25x 100
									75	105			125	125
									110	140			160	160
1	20	11	10,5	11	10	M12	18	18	50	80	30	41	100	Z 1850W/25x33x 100
									75	105			125	125
									110	140			160	160
1	26	11	10,5	11	10	M12	18	18	55	95	30	41	125	Z 1850W/30x41x 125
									90	130			160	160
									130	170			200	200
1	39	11	10,5	11	10	M12	18	18	55	95	30	54	125	Z 1850W/30x54x 125
									90	130			160	160
									130	170			200	200

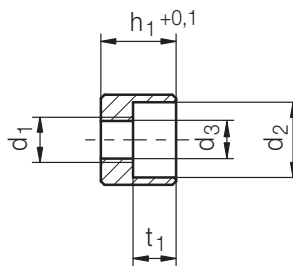
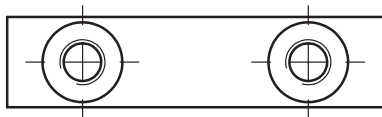
Z 1851/...

Führungsleiste
Guide strip
Barre de guidage

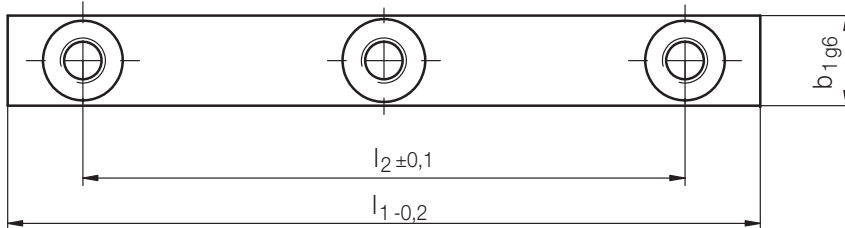
Mat.: 1.2379/58 HRC



Typ 1



Typ 2



4

Typ	t ₁	d ₃	d ₂	d ₁	l ₂	b ₁	h ₁	l ₁	Nr./No.
1	5,7	5,3	10	M6	30	12	10	50	Z 1851/12x10x 50
2					70			90	90
					80			125	125
1	6,8	6,8	11	M8	30	16	16	50	Z 1851/16x16x 50
2					70			90	90
					105			125	125
1	6,8	6,8	11	M8	60	20	20	80	Z 1851/20x16x 80
2					105			125	125
					140			160	160
1	6,8	6,8	11	M8	60	25	20	80	Z 1851/25x20x 80
2					105			125	125
					140			160	160

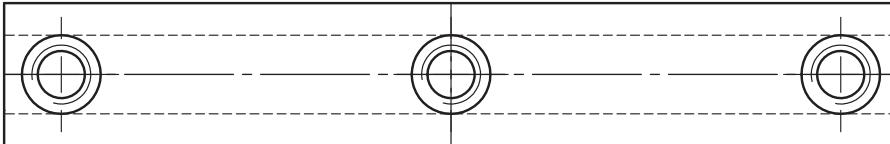
Z 1852 / ...

Führungsleiste
Guide strip
Barre de guidage

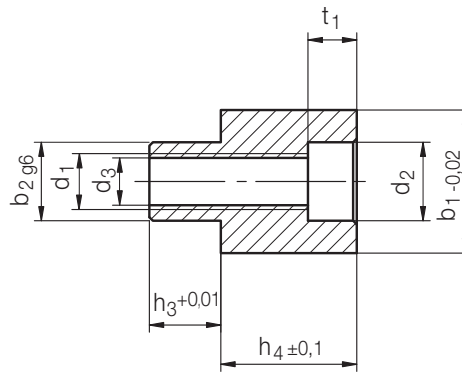
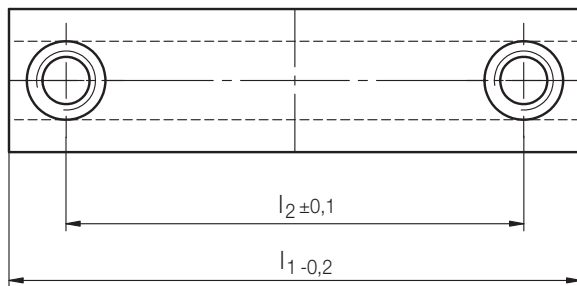
Mat.: 1.2379 / 58 HRC



Typ 2



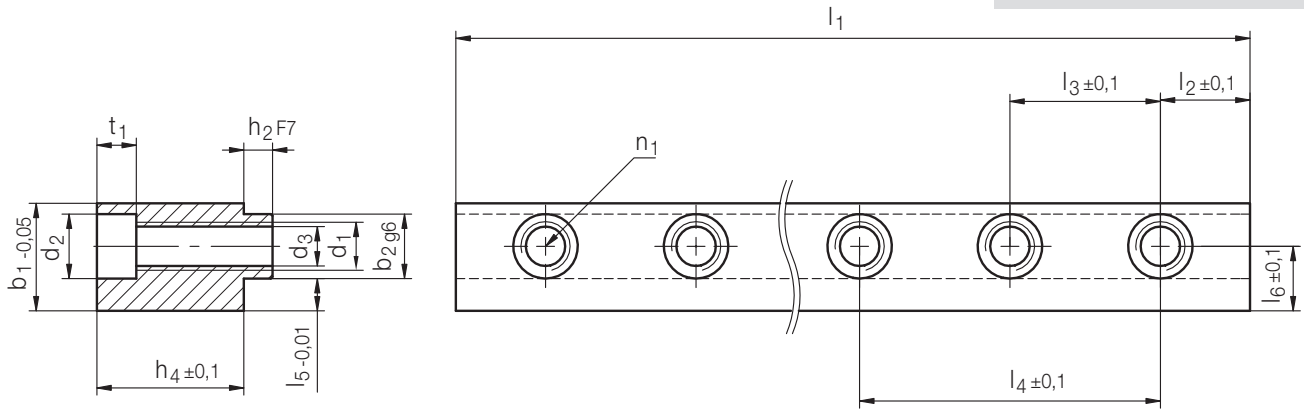
Typ 1



Typ	t ₁	d ₃	d ₂	d ₁	l ₂	b ₂	h ₃	b ₁	h ₄	l ₁	Nr./No.
1	4	5,3	10	M 6	34	8	8	16	7	50	Z 1852 / 16 x 7 x 50
					55					71	71
					74					90	90
1	5,7				34				11	50	Z 1852 / 16 x 11 x 50
					55					71	71
					74					90	90
1	6,8	6,8	11	M 8	64	12	10	20	14	80	Z 1852 / 20 x 14 x 80
					84					100	100
					109					125	125
1	9	8,5	15	M10	80	15	12	25	25	100	Z 1852 / 25 x 25 x 100
					105					125	125
					140					160	160
1	11	10,5	18	M12	95	18	16	30	41	125	Z 1852 / 30 x 41 x 125
					130					160	160
					170					200	200

Z 1853/...

Führungsleiste, ablängbar
 Guide strip, can be cut as required
 Barre de guidage, pouvant être raccourci
 Mat.: 1.2379/58 HRC

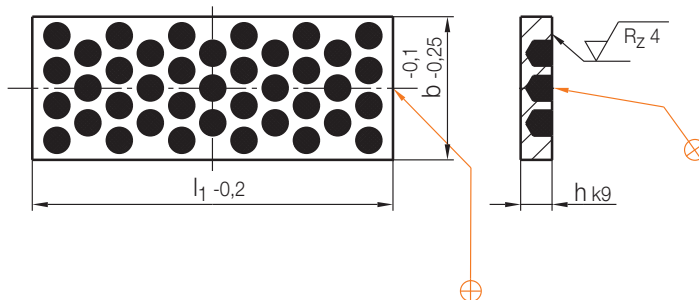
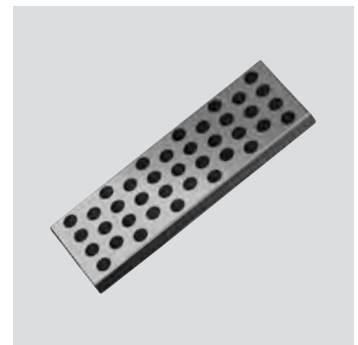


n ₁	h ₂	t ₁	d ₃	d ₂	d ₁	l ₆	l ₅	l ₄	l ₃	l ₂	b ₂	b ₁	h ₄	l ₁	Nr./No.
9	4	4	5,3	10	M 6	10	6	70	35	10	8	16	7	300	Z 1853/16 x 7 x 300
		5,7											11	300	16 x 11 x 300
12	5	6,8	6,8	11	M 8	12	7	100	50	17,5	10	20	14	420	20 x 14 x 420
10	6	9	8,5	15	M10	15	8			25	14	25	25	500	25 x 25 x 500
	8	11	10,5	18	M12	18	9	18	30	41	500	30 x 41 x 500			

4

Z 186W/...

Flachführung, selbstschmierend
 Slide plate, self lubricating
 Plaque de frottement, autolubrifiante
 Mat.: 2.0492
 max. °C: 200

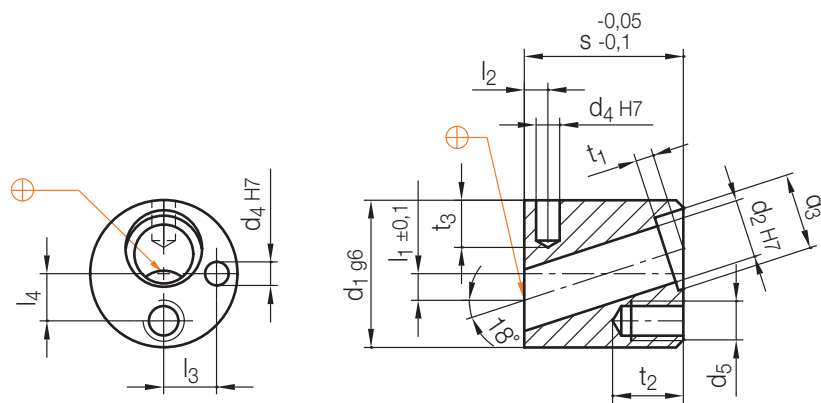


b	h	l ₁	Nr./No.	b	h	l ₁	Nr./No.
25	5	50	Z 186 W/25 x 5 x 50	40	6	160	Z 186 W/40 x 6 x 160
		71	71			200	200
		90	90			63	6
50	Z 186 W/40 x 5 x 50	100	100				
71	71	125	125				
90	90	160	160				
40	5	50	Z 186 W/40 x 5 x 50	40	6		
		71	71				
		90	90				
40	6	80	Z 186 W/40 x 6 x 80				
		100	100				
		125	125				

Z 187/...

Aufnahme
Retainer
Retenue de coulisseau

Mat.: 1.2312 / 1080 N/mm²

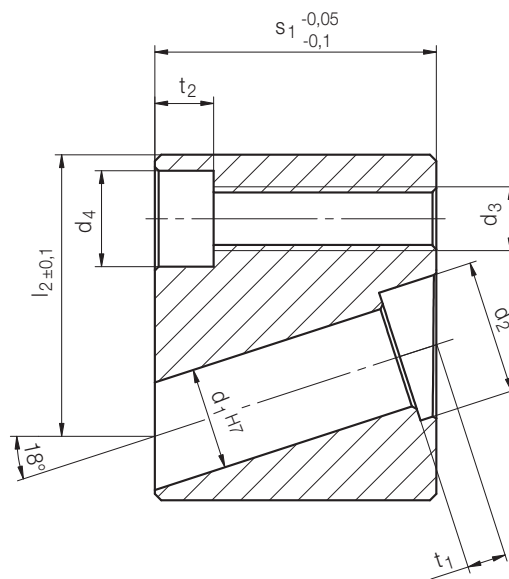
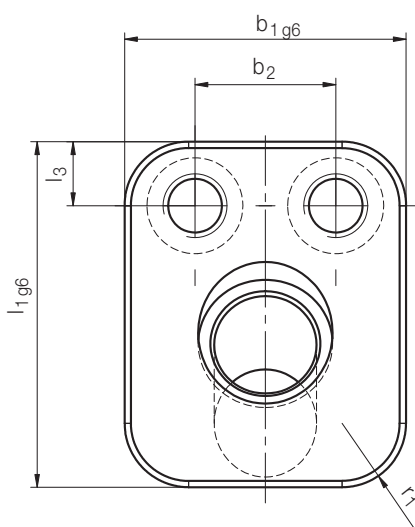


t ₃	t ₂	t ₁	l ₄	l ₃	l ₂	l ₁	d ₅	d ₄	d ₃	d ₁	s	d ₂	Nr./No.
6	12	3	7	8	4	2,5	M 5	3	11	22	22	8	Z 187/22 x 22 x 8
8			8	9		4,5	M 6	4	13	25	27	10	25 x 27 x 10
	10	16,5	8	10	11	6	M 8	5	17	32	36	12	32 x 36 x 12
12				13	19				36	14	36 x 36 x 14		
13,5				14	21				40	16	Z 187/40 x 46 x 16		
15				15	23				18	18			
12	15	15	15	16,5	10	8,5	6	25	45	20	Z 187/45 x 46 x 20		
			16,5	18				27	50	22	Z 187/50 x 56 x 22		
			21	24				29	24	24			
14	23	15	21	24	8	11	M10	8	37	63	66	30	Z 187/63 x 66 x 30
			32	32									

Z 1870/...

Aufnahme, eckig
 Retainer, square
 Retenue de coulisseau, anguleuse

Mat.: 1.2312/1080 N/mm²

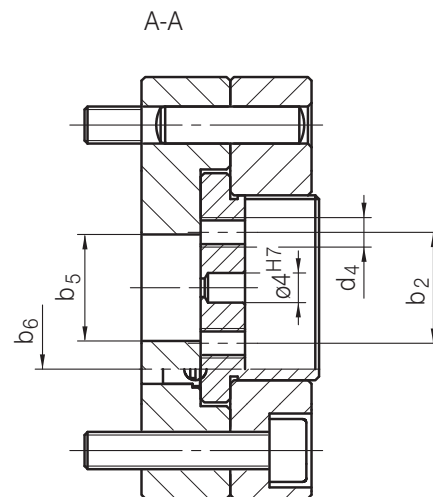
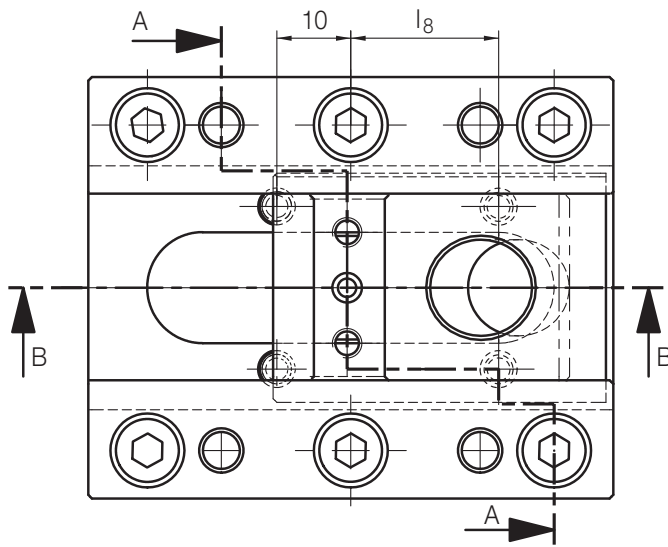
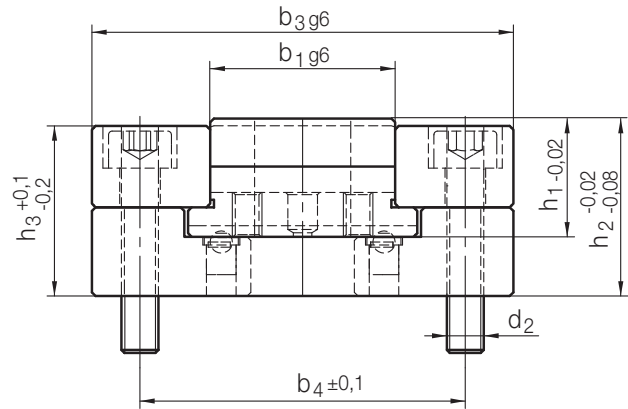
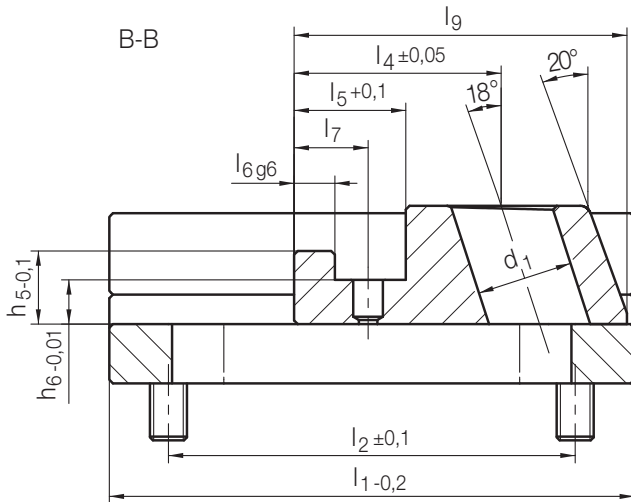


4

t ₂	d ₄	d ₃	l ₃	b ₂	r ₁	t ₁	d ₂	l ₂	b ₁	l ₁	s ₁	d ₁	Nr./No.
5,7	10	M 6	6,5	12	5	3	11	19,5	25	25	17	8	Z 1870/25x25x17x 8
			7	13			13	23	27	30	22	10	27x30x22x10
6,8	11	M 8	8	16,5	6	6	17	31	32	40	36	12	Z 1870/32x40x36x12
			7				8	19			14	14	
			7,5	17			21	35		45	46	16	Z 1870/32x45x46x16
9	15	M10	9,5		8		23	40,5	36	52		18	36x52x46x18
			10	20			10	25	42	40	55	20	Z 1870/40x55x46x20
			10,5			15	27	46		60	56	22	60x56x22
11	18	M12	11	22			29	49,5	45	65		24	Z 1870/45x65x56x24
			12	30			12	37	56	52	75	66	30
				32					55		66	32	55x75x66x32

Z1880/...

Schieberbaukasten
Slide modular system
Support guide de coulisseau

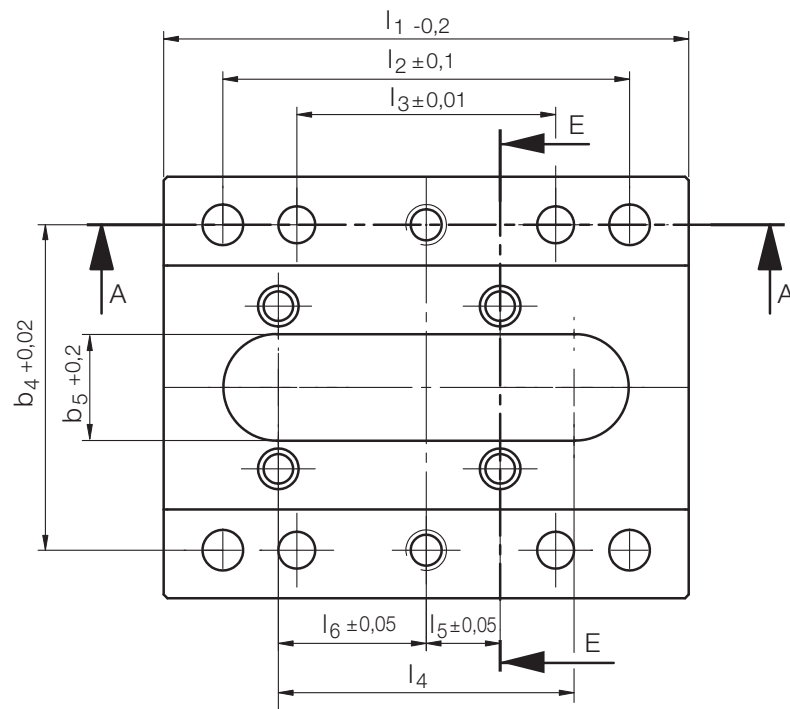
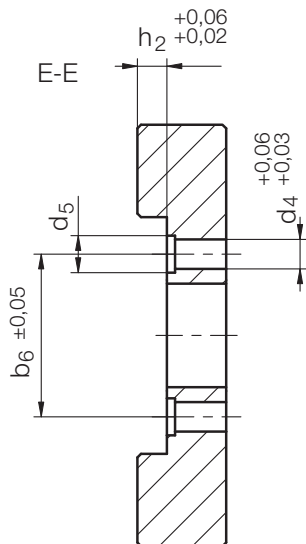
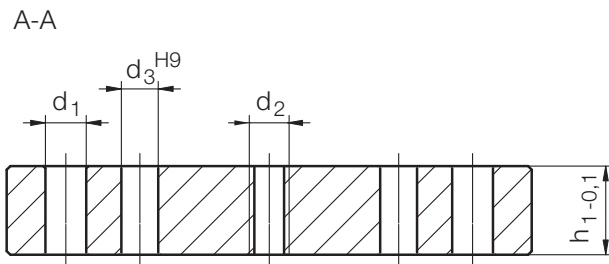
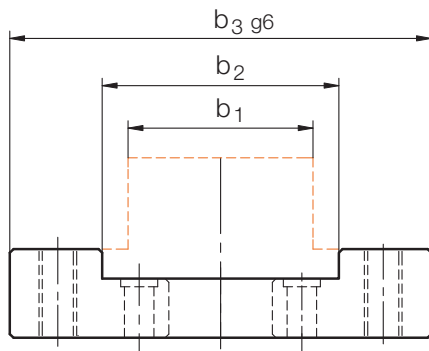


l ₉	l ₈	l ₇	l ₆	l ₅	l ₄	l ₂	d ₄	d ₂	d ₁	h ₆	h ₅	h ₃	h ₂	b ₆	b ₅	b ₄	b ₃	b ₂	h ₁	b ₁	l ₁	Nr./No.		
40	20	10	5	15,1	25,45	55	M4	M5	11	5,5	8,4	19	20	22	14	44	57	15	12	25	71	Z1880/12x25x 71		
					24,45									13		30	59	72				20	40	40
					50									16		82	95	30				63	63	
45	20	10	5,5	15,1	28	55	M4	M5	13	6	9,9	23	24	22	14	44	57	15	16	25	71	Z1880/16x25 x71		
					27									15		30	59	72				20	40	40
					50									16		82	95	30				63	63	
50	25	13	8	18,1	31,7	84	M4	M6	13	9	13,4	29	30	30	60	64	80	20	20	40	100	Z1880/20x40x100		
					30,7									15		50	87	103				30	63	63
					60									104		120	40	80				80		
55	25	16	10	22,1	33,45	84	M5	M6	15	10	15,9	34	35	30	60	64	80	20	25	40	100	Z1880/25x40x100		
					50									87		103	30	63				63		
					60									104		120	40	80				80		

Z 1881/...

Grundplatte
Base plate
Plaque de base

Mat.: 1.2842/56 HRC



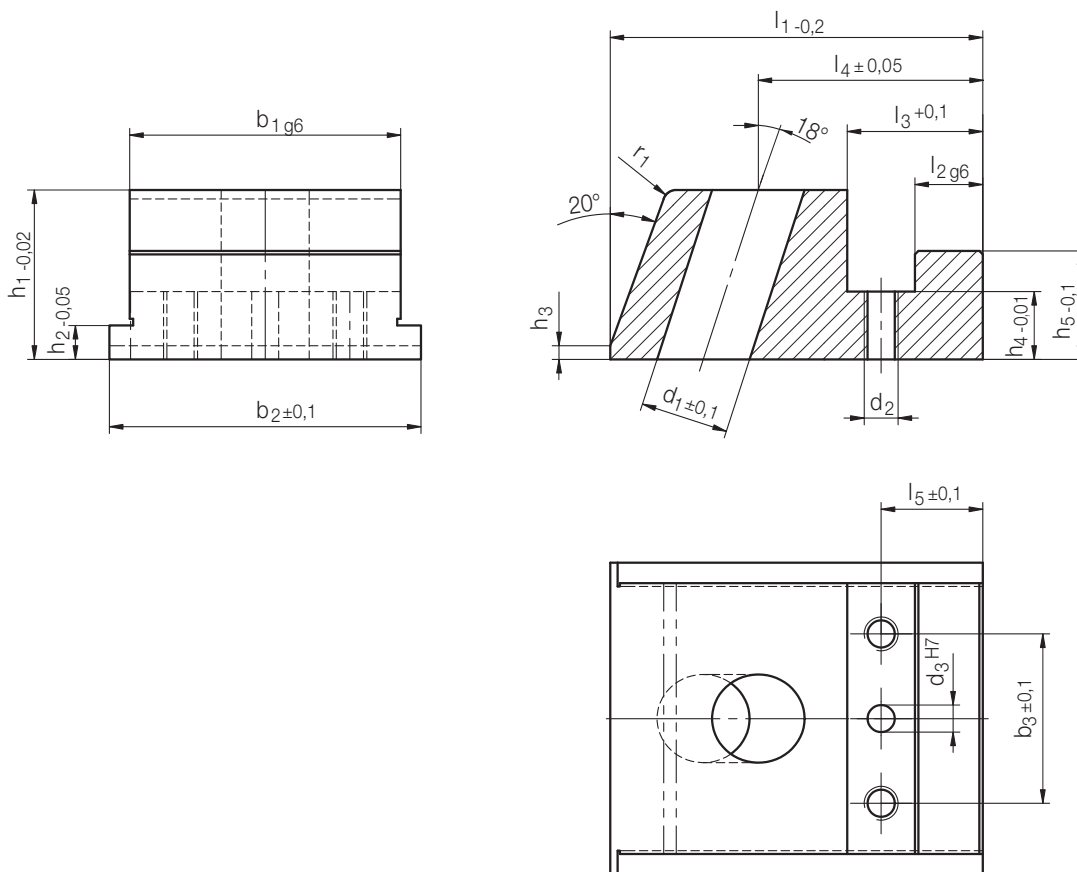
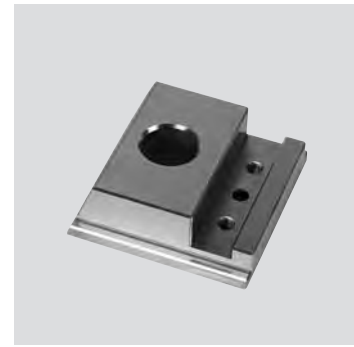
4

l ₆	l ₅	l ₄	l ₃	l ₂	d ₅	d ₄	d ₃	d ₂	d ₁	h ₂	h ₁	b ₆	b ₅	b ₄	b ₂	Z 1801/... b ₁	b ₃	l ₁	Nr./No.		
20	10	40	35	55	5	4	5	M5	5,5	4	12	22	14	44	32	25	57	71	Z 1881/25 x 57 x 71		
					7	6						30		59	47	40	72		40 x 72		
												50		16	82	70	63		95	63 x 95	
25	10	50	60	84	7	6	6	M6	6,6	5	15	30	16	64	47	40	80	100	Z 1881/40 x 80 x 100		
															50	87	70		63	103	63 x 103
															60		104		87	80	120

Z 1801/...

Schieber
Slide
Coulisseau

Mat.: 1.2343/54 HRC

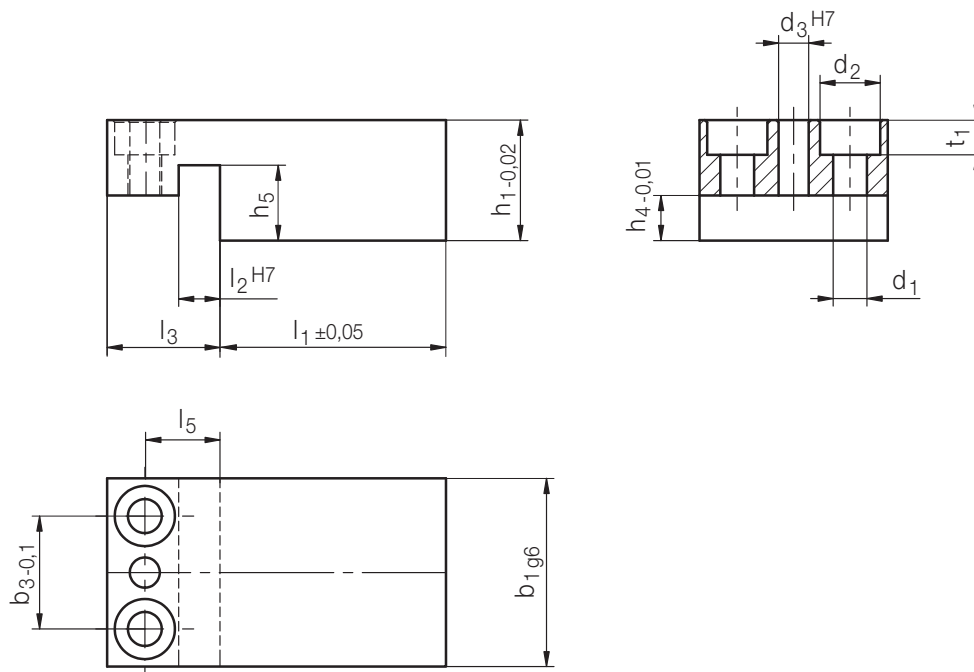
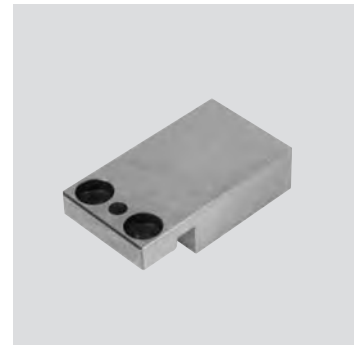


r ₁	h ₃	h ₅	h ₄	l ₅	l ₃	l ₂	d ₃	d ₂	b ₃	b ₂	l ₄	d ₁	h ₂	h ₁	b ₁	l ₁	Nr./No.									
1,5	1,5	8,4	5,5	10	15,1	5	4	M4	15	31	25,45	11	4	12	25	40	Z 1801 / 12x25 x 40									
											24,45						40	40								
											69						63	63								
			9,9	6		5,5																				
																	15	31	28				16	25	45	Z 1801 / 16x25 x 45
																	20	46					40			40
								30	69	27	15			63			63									
2	2	13,4	9	13	18,1	8	4	M4	20	46	31,7	13	5	20	40	50	Z 1801 / 20x40 x 50									
											69						63	63								
											86						80	80								
			15,9	10		16					22,1	10														
																	20	46	33,45				25	40	55	Z 1801 / 25x40 x 55
																	30	69					63			63
								40	86					80			80									

Z 1802 / ...

Konturschieber
Slide for contour
Support de coulisseau

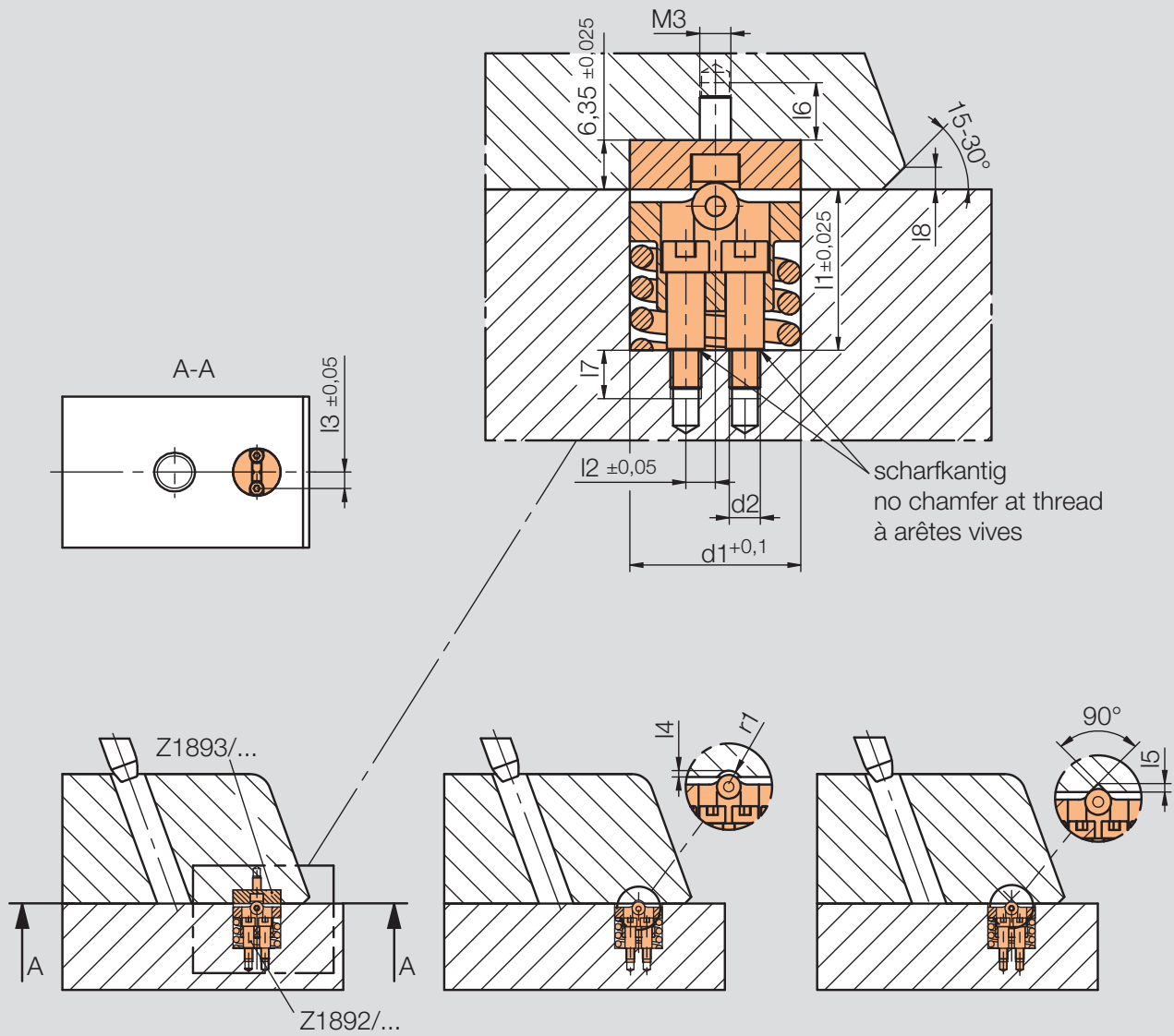
Mat.: 1.2767 / 55 HRC
Toolox 44 / 45 HRC



4

d ₃	h ₅	h ₄	t ₁	d ₂	d ₁	b ₃	l ₅	l ₃	l ₂	h ₁	b ₁	l ₁	Mat.		Nr. / No.	
													1.2767	Toolox 44		
4	8,5	5,5	3,2	8	4,5	15	10	15	5	12	25	30	x	x	Z 1802 / 12x25x 30 / Mat.	
						20					x		x	40		
						30					x		x	63		
	10	6	4,6				15			5,5	16	25	40	x	x	Z 1802 / 16x25x 30 / Mat.
							20					x		x	40	
							30					x		x	63	
	13,5	9					20	13	18	8	20	40	40	x	x	Z 1802 / 20x40x 40 / Mat.
							30					x		x	63	
							40					x		x	80	
16	10	5,7	10	5,5		20	16	22	10	25	40	40	x	x	Z 1802 / 25x40x 40 / Mat.	
						30					x		x	63		
						40					x		x	80		

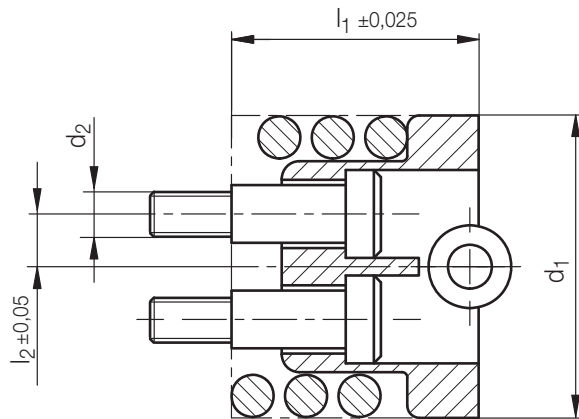
Z 1892/...
Z 1893/...



max. Haltekraft max. holding force Puissance de verrouillage max. [kg]	r1	d2	l8	l7	l6	l5	l4	l3	l2	d1	l1	Z 1892/...	Z 1893/...
4,5	2	M3	0,25	1,9	6,35	1	0,23	4,85	3,95	15,9	4,06	... 16 x 4,06	... 16 x 6,35
13,5	3	M4	1	4,8		2	0,75	6,35	3,8	19,1	12,7	... 19 x 12,7	... 19 x 6,35
36			1,2	6,2				7,6		22,3	19,05	... 22 x 19,05	... 22 x 6,35

Z 1892 / ...

Federndes Druckstück
Spring plunger
Vis à bille avec tête
max.: 218°C

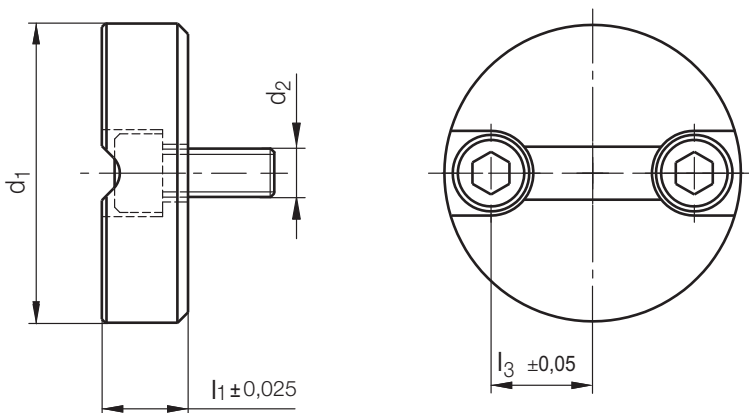


max. Haltekraft max. holding force Puissance de verrouillage max. [kg]	l ₂	d ₂	d ₁	l ₁	Nr./No.
4,5	3,95	M3	15,6	4,06	Z 1892/ 16 x 4,06
13,5	3,8	M4	18,8	12,7	19 x 12,7
36			21,8	19,05	22 x 19,05

4

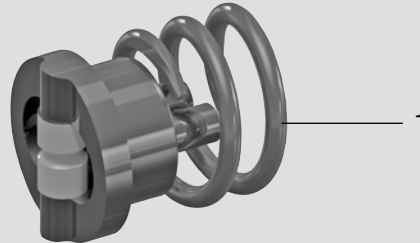
Z 1893 / ...

Aufnahme
Retainer
Logement de doigt de démoulage
max.: 218°C



l ₃	d ₂	d ₁	l ₁	Nr./No.
4,85	M3	15,6	6,35	Z 1893/ 16 x 6,35
6,35		18,8		19
7,6		21,8		22

Federndes Druckstück
Spring plunger
Vis à bille avec tête



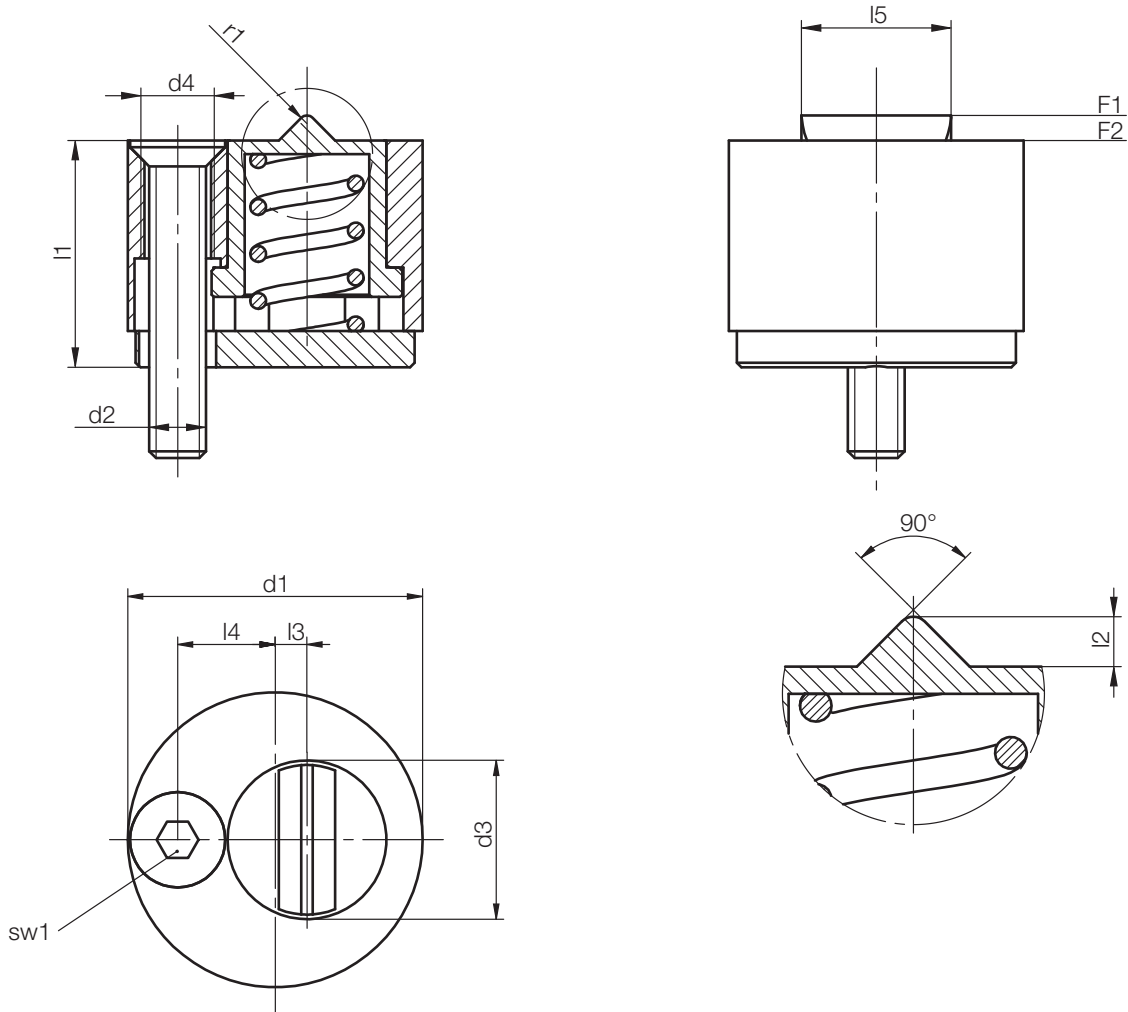
Pos.	Benennung	Designation	Désignation	Stück Quantity Pièce
1	Feder	Spring	Ressort	1

Nr. / No.	1 Z 1892 /...
Z 1892 / 16 x 4,06	... 16 x 4,06 - 03 / E
19 x 12,7	... 19 x 12,7 - 03 / E
22 x 19,05	... 22 x 19,05 - 03 / E

Z 1895/...

Schiebersicherung
Slide retainer
Retenue de coulisseau

Mat.: 1.2842/DLC
max. 180°C



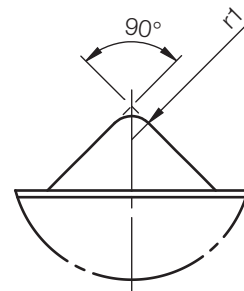
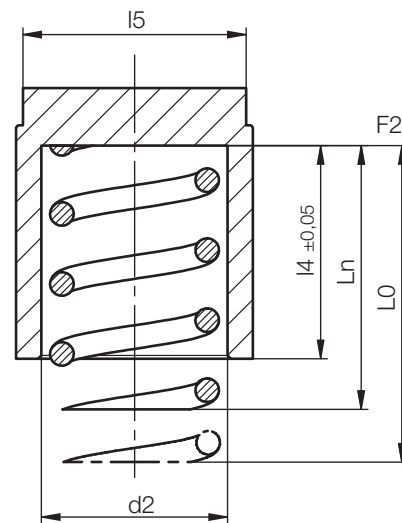
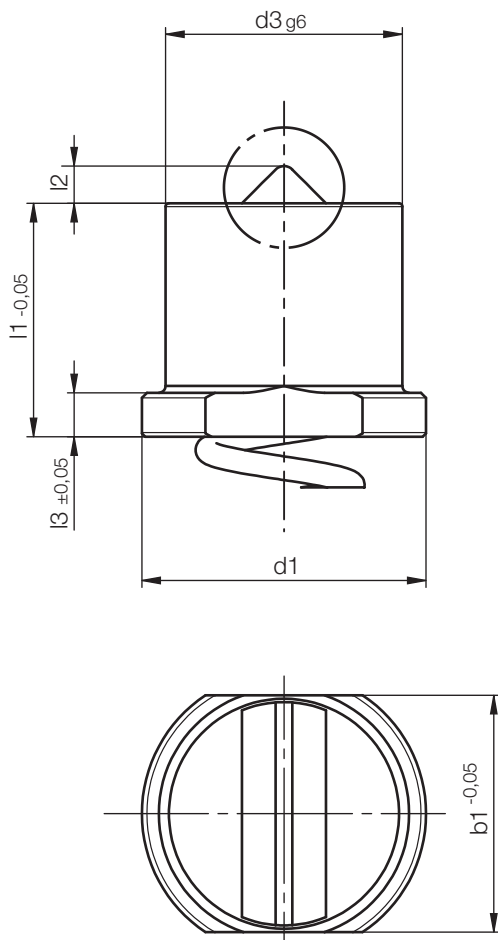
Neu / New / Nouveau

F2 [N]	F1 [N]	sw1	r1	l5	l4	l3	l2	l1	d4	d3	d2	d1	Nr./No.
34	28	1,3	0,35	6,6	4,3	1,4	1	10	M3	7	M2	13	Z 1895/13
42	38	2	0,5	9,6	6	2	1,8	14	M4	10	M3	18	18
92		2,5	0,75	14,4	9	3	2,8	21	M5	15	M4	27	27

Z 1896/...

Schiebersicherungsrast
 Slide retainer catch
 Cran de retenue de coulisseau

Mat.: 1.2842/DLC
 max. 180°C



4

Neu / New / Nouveau

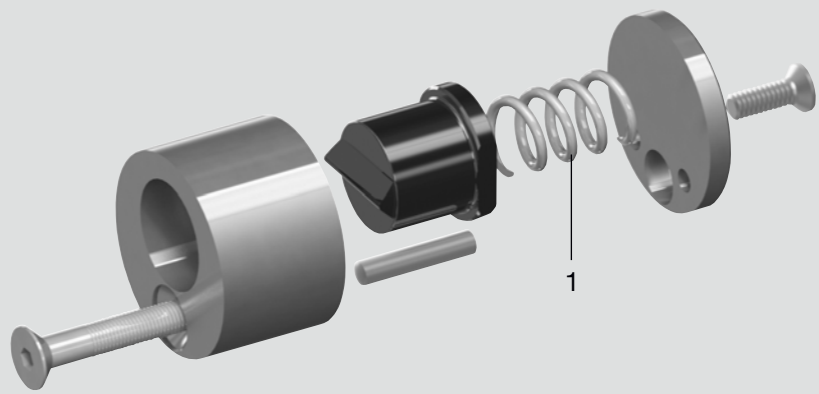
F2	r1	b1	L0	Ln	l1	l2	l3	l4	l5	d1	d2	d3	Nr./No.
34	0,4	7	12	7,5	7	1	1,4	6,3	6,6	8,4	5,3	7	Z 1896/ 7
42	0,5	10	16	10	10	1,8	2	9	9,6	12	8,3	10	10
92	0,8	15	18	16	15	2,8	3	14	14	18	12	15	15

Z 1895 /..., Z 1896 /...

Ersatzteile
Spare parts
Pièces détachées

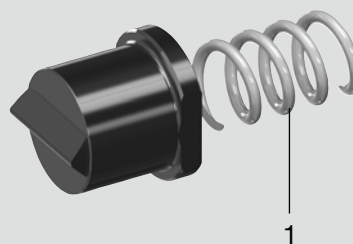
Schiebersicherung
Slide retainer
Retenue de coulisseau

Z 1895/...



Schiebersicherungsraсте
Slide retainer catch
Cran de retenue de coulisseau

Z 1896/...



4

Pos.	Benennung	Designation	Désignation	Stück Quantity Pièce
1	Feder	Spring	Ressort	1

Z 1895 /...

Nr./No.	1 Z 1895/...
Z 1895/13	... 13-04/E
18	... 18-04/E
27	... 27-04/E

Z 1896 /...

Nr./No.	1 Z 1895/...
Z 1896/ 7	... 13-04/E
10	... 18-04/E
15	... 27-04/E

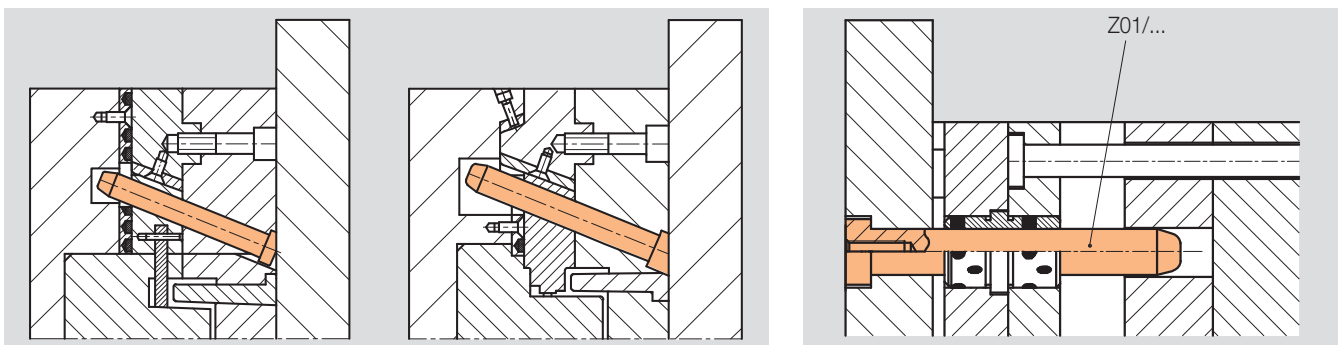
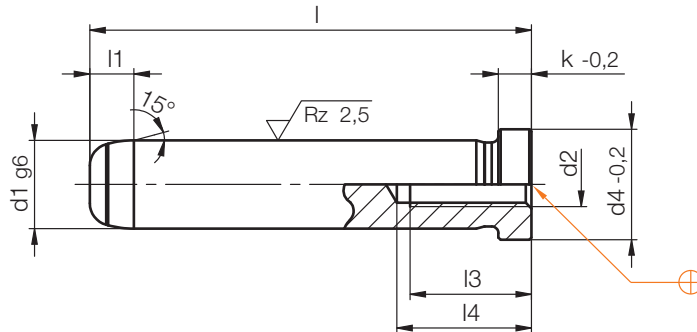
Z01/...

Führungssäule (Schrägzugsäule)
 Guide pillar (Angle Pin)
 Colonne de guidage

Mat.: ≈ 1.0401/720 HV 30
 DIN ISO 8404-A



1



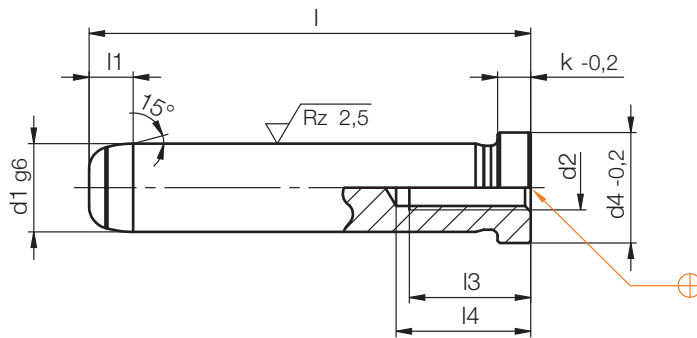
k	l4	l3	l1	d4	d2	d1	l	Nr./No.								
3	12	8	4	10	M4	8	40	Z01/ 8x 40								
							50	50								
							60	60								
							80	80								
							100	100								
	15	10			12	M5	9	40	Z01/ 9x 40							
								60	60							
								80	80							
								100	100							
								120	120							
								6	17	12	7	16	M6	10	40	Z01/10x 40
															60	60
80	80															
100	100															
120	120															
6	17	12	7	16	M6	12	40	Z01/12x 40								
							60	60								
							80	80								
							100	100								
							120	120								
							140	140								
							160	160								
8				18	M6	14	60	Z01/14x 60								
							80	80								
							100	100								
							120	120								
							140	140								
							160	160								
							180	180								

k	l4	l3	l1	d4	d2	d1	l	Nr./No.	
8	22	16	7	18	M8	15	60	Z01/15x 60	
							80	80	
							100	100	
							120	120	
							140	140	
							160	160	
	27	20			22	M10	18	40	Z01/16x 40
								60	60
								80	80
								100	100
								120	120
								140	140
27	20			22	M10	18	60	Z01/18x 60	
							80	80	
							100	100	
							120	120	
							140	140	
							160	160	
8				18	M8	16	40	Z01/16x 40	
							60	60	
							80	80	
							100	100	
8				18	M8	16	120	120	
							140	140	
							160	160	
							180	180	
8				18	M8	16	200	200	
							240	240	

Z01/...

Führungssäule (Schrägzugsäule)
 Guide pillar (Angle Pin)
 Colonne de guidage

Mat.: ≈ 1.0401/720 HV 30
 DIN ISO 8404-A



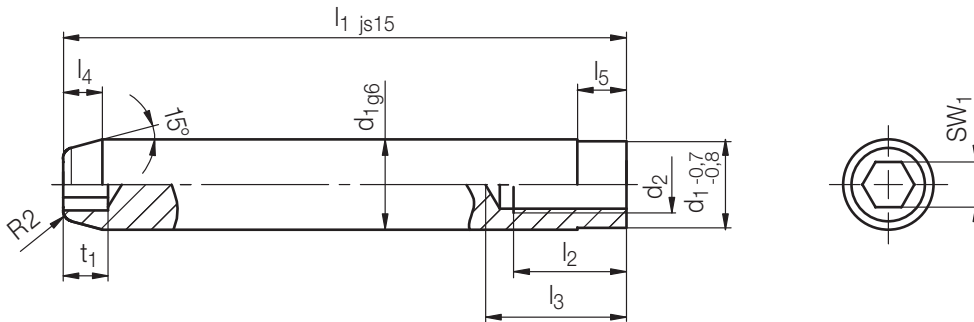
k	l4	l3	l1	d4	d2	d1	l	Nr./No.
8	27	20	7	24	M10	20	60	Z01/20x 60
							80	80
							100	100
							120	120
							140	140
							160	160
							180	180
							200	200
							240	240
							300	300
15				26		22	80	Z01/22x 80
							100	100
							120	120
							140	140
							160	160
							180	180
							200	200
							220	220
							240	240
							300	300
	32	24		28	M12	24	80	Z01/24x 80
							100	100
							120	120
							140	140
							160	160
							180	180
							200	200
							220	220
							240	240
							300	300

k	l4	l3	l1	d4	d2	d1	l	Nr./No.							
15	41	32	7	36	M16	30	100	Z01/30x100							
							120	120							
							160	160							
							200	200							
							240	240							
							300	300							
							360	360							
													32	100	Z01/32x100
														120	120
														160	160
200	200														
240	240														
300	300														
360	360														
			10	48		40								160	Z01/40x160
														200	200
														240	240
							300	300							
							360	360							
													50	160	Z01/50x160
														200	200
														240	240
														300	300
														360	360

Z010/...

Schrägsäule
Angle pin
Doigt inciné

Mat.: ~ 1.0401



d ₂	l ₂	l ₃	l ₄	SW ₁	t ₁	d ₁	l ₁	Nr./No.
M 6	10	15	4	5	5	10	60	Z010/10x 60
							80	80
							100	100
M 6	10	15	7	6	6	12	60	Z010/12x 60
							80	80
							100	100
							120	120
M 6	10	15	7	6	8	14	50	Z010/14x 50
							60	60
							67	67
							70	70
							75	75
							80	80
							90	90
							100	100
							M 8	10
60	60							
70	70							
80	80							
90	90							
M 8	12	18	7	6	8	16	80	Z010/16x 80
							90	90
							100	100
							118	118
							120	120
							132	132
							140	140
							160	160
M10	15	22	7	8	10	18	60	Z010/18x 60
							70	70
							80	80
							90	90
							100	100
							125	125
							140	140
							170	170

d ₂	l ₂	l ₃	l ₄	SW ₁	t ₁	d ₁	l ₁	Nr./No.
M10	15	22	7	10	10	20	60	Z010/20x 60
							70	70
							80	80
							90	90
							100	100
							120	120
M10	15	22	7	10	10	22	70	Z010/22x 70
							80	80
							90	90
							100	100
M12	18	25	7	12	12	24	70	Z010/24x 70
							80	80
							90	90
							100	100
							120	120
							140	140
M16	18	25	7	12	12	30	80	Z010/30x 80
							90	90
							100	100
							120	120
							140	140
							170	170
M16	18	25	7	12	12	32	80	Z010/32x 80
							90	90
							100	100
							120	120
							140	140
							170	170

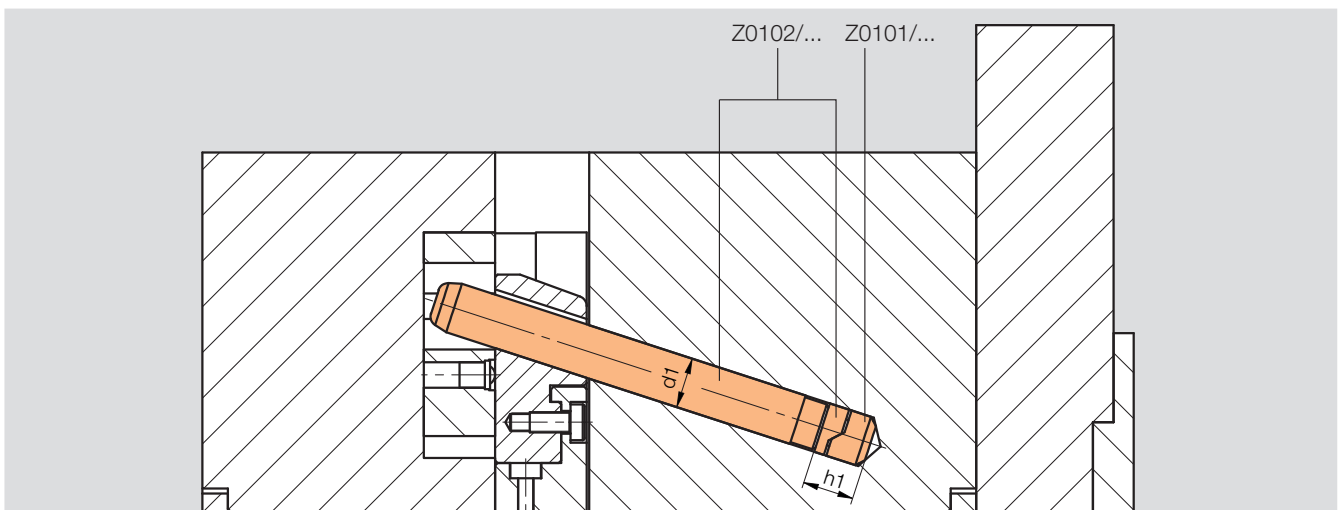
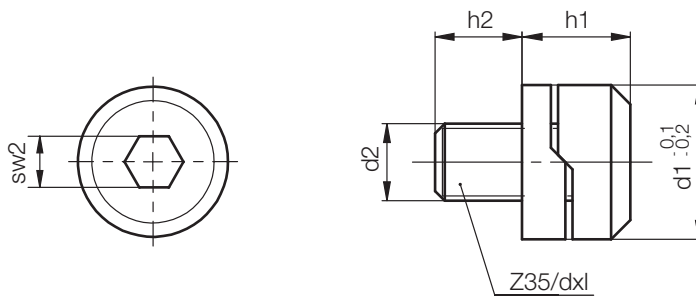
Z0101/...

Klemmscheibe
Clamping disc
Rondelle de serrage

Mat.: = 1.2516



1

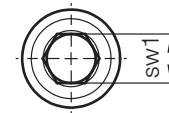
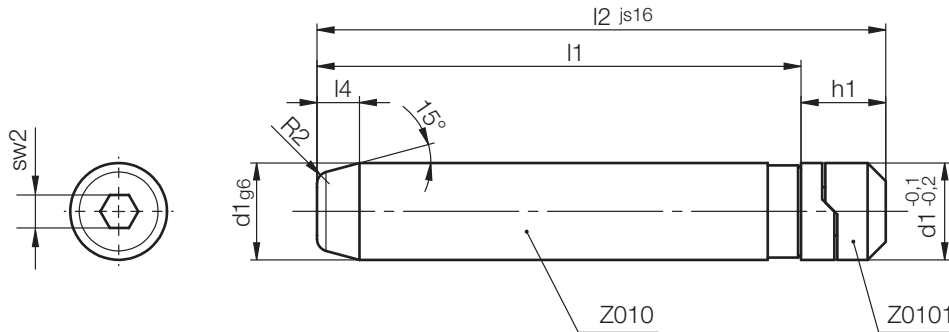


Neu / New / Nouveau

Z35/...	sw2	h2	h1	d1	d2	Nr./No.
... 6x20	3	10	9,8	10	M 6	Z0101/ 10x 6
				12		12
... 6x25	4	12	13,8	14	M 8	14
... 8x25				15		15x 8
...10x30	5	15	15,3	16	M 10	16
				18		18x 10
				20		20
...12x40	6	18	21,3	22	M 12	22
...16x40	8			21,8		24
				30		30x 16
				32		32

Z0102/...

Schrägsäule, mit Klemmscheibe
 Angle pin, with clamping disc
 Doigt incliné, avec rondelle de serrage



Neu / New / Nouveau

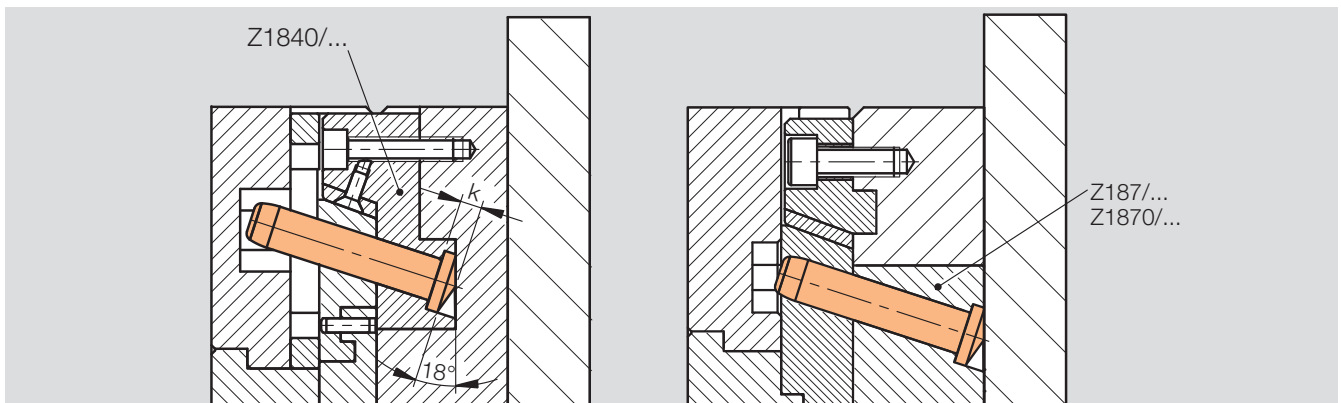
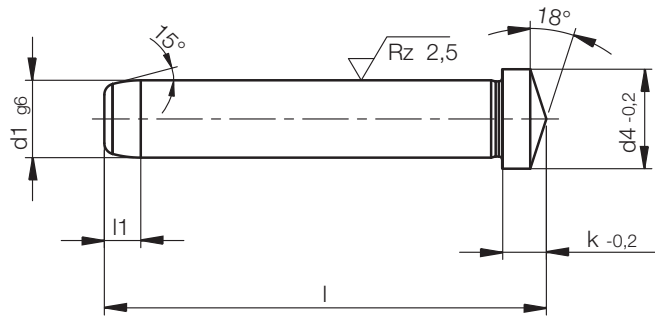
sw2	sw1	l4	d2	l2	h1	d1	l1	Nr./No.
3	5	4	M6	69,8	9,8	10	60	Z0102/10x 60
				89,8			80	80
				109,8			100	100
		7		69,8		12	60	Z0102/12x 60
				89,8			80	80
				109,8			100	100
	4	6	M8	63,8	13,8	14	50	Z0102/14x 50
				73,8			60	60
				80,8			67	67
				83,8		70	70	
				88,8		75	75	
				93,8		80	80	
	4	6	M8	103,8	15	50	50	Z0102/15x 50
				113,8			60	60
				133,8			70	70
				93,8		16	80	80
				103,8			90	90
				93,8			80	Z0102/16x 80
103,8				90			90	
113,8				100			100	
131,8				118			118	
133,8				120			120	
145,8	132	132						
153,8	140	140						
173,8	160	160						
5	8	M10	75,3	15,3	18	60	Z0102/18x 60	
			85,3			70	70	
			95,3			80	80	
			105,3		20	90	90	
			115,3			100	100	
			140,3			125	125	
			155,3			140	140	
			165,3			150	150	
			185,3			170	170	

sw2	sw1	l4	d2	l2	h1	d1	l1	Nr./No.				
5	8	7	M10	76,3	16,3	20	60	Z0102/20x 60				
				86,3			70	70				
				96,3			80	80				
				106,3			90	90				
				116,3			100	100				
				136,3			120	120				
				156,3			140	140				
				166,3			150	150				
				176,3			160	160				
				186,3			170	170				
				196,3			180	180				
				206,3			190	190				
6	10	M12	91,3	21,3	24	70	Z0102/24x 70					
			101,3			80	80					
			111,3			90	90					
			121,3			100	100					
			141,3			120	120					
			161,3			140	140					
			181,3			160	160					
			201,3			180	180					
			221,3			200	200					
			241,3			220	220					
			8			14	M16	101,8	21,8	30	80	Z0102/30x 80
								111,8			90	90
121,8	100	100										
141,8	32	120		120								
161,8		140		140								
101,8		80		Z0102/32x 80								
111,8		90		90								
121,8		100		100								
141,8		120		120								
161,8		140		140								

Z016/...

Schrägsäule, 18°Kegel
 Angled pillar, 18° tapered
 Doigt incliné, cône à 18°

Mat. : ≈ 1.0401 / 720 HV 30
 DIN ISO 8404-A



4

k	l1	d4	d1	l	Nr./No.	
3	4	12	10	40	Z016/10x 40	
				60	60	
				80	80	
				100	100	
				120	120	
6	7	16	12	60	Z016/12x 60	
				80	80	
				100	100	
				120	120	
				140	140	
				160	160	
8	18	14	14	60	Z016/14x 60	
				80	80	
				100	100	
				120	120	
				140	140	
				160	160	
	20	20	16	16	100	Z016/16x100
					120	120
					140	140
					160	160
				180	180	
				200	200	

k	l1	d4	d1	l	Nr./No.		
8	7	22	18	100	Z016/18x100		
				120	120		
				140	140		
				160	160		
				180	180		
			20	20	20	100	Z016/20x100
						120	120
						140	140
						160	160
						180	180
				200	200		
				240	240		