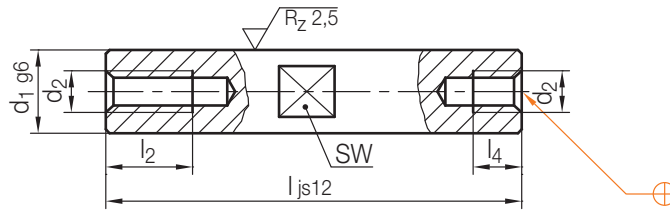


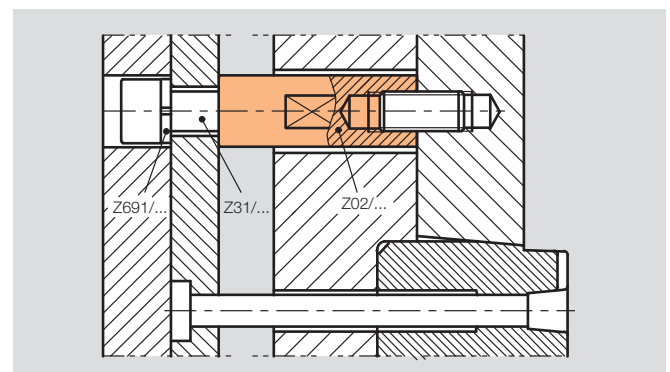
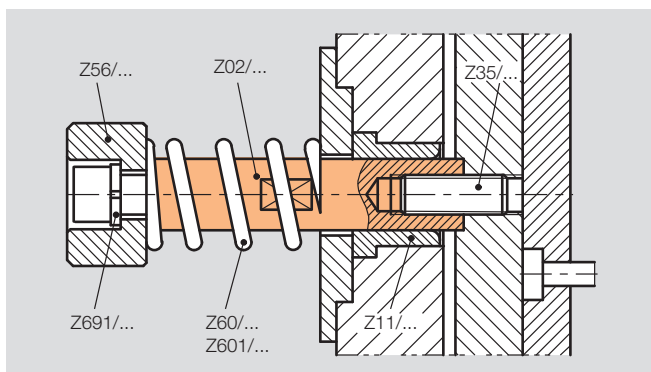
Z02/...

Auswerferbolzen
Ejector rod
Queure d'éjection

Mat.: ≈ 1.0401 / 690 + 70 HV 30



3

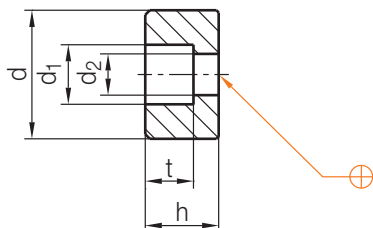


SW	l ₄	l ₂	d ₂	d ₁	l	Nr./No.
9	9	16	M 6	10	60	Z02/10x 60
					70	70
					80	80
					100	100
					120	120
					140	140
12	11	16	M 8	14	60	Z02/14x 60
					70	70
					80	80
					100	100
					120	120
					140	140
14	12	20	M10	18	100	Z02/18x100
					120	120
					140	140
					160	160
					180	180
					200	200

SW	l ₄	l ₂	d ₂	d ₁	l	Nr./No.
14	12	20	M10	18	220	Z02/18x220
					240	240
					240	240
16	14	25	M12	20	100	Z02/20x100
					120	120
					140	140
					160	160
					180	180
					200	200
19	14	25	M12	24	120	Z02/24x120
					140	140
					160	160
					180	180
					200	200
					240	240
24	16	30	M16	30	180	Z02/30x180
					220	220
					260	260
					300	300
					300	300

Z56/...

Haltescheibe
 Stop disc
 Rondelle de butée
 Mat.: 1.1730/690 N/mm²



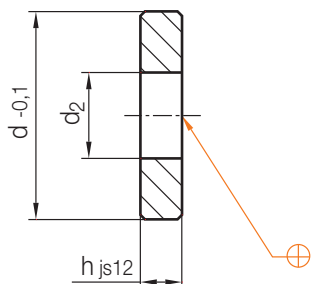
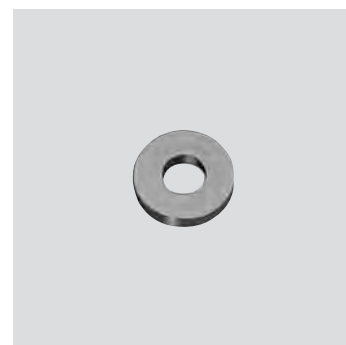
3

d ₁	d ₂	t	d	h	Nr./No.
11	6,6	8,4	15	10	Z56/15x10
14,5	9	11	22	14	22x14
17,5	11	13,5	36	20	36x20

d ₁	d ₂	t	d	h	Nr./No.
20	14	15,5	46	25	Z56/46x25
26	18	21	56	32	56x32

Z561/...

Scheibe
 Washer
 Rondelle
 Mat.: 1.0715/950 N/mm²



d ₂	d	h	Nr./No.
6,2	14	3	Z561/14x3
8,3	18	4	18x4
10,4	24	5	24x5

d ₂	d	h	Nr./No.
12,5	30	6	Z561/30x6
16,5	40	8	40x8