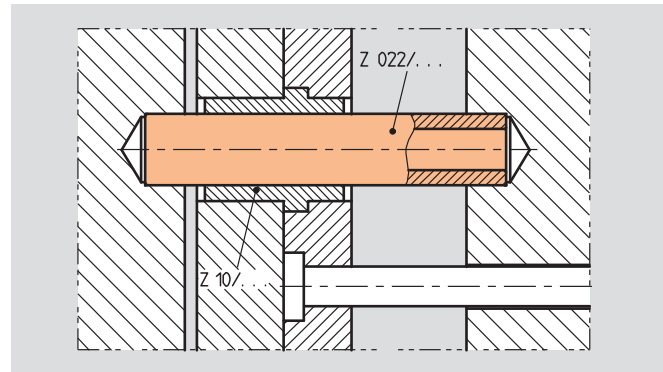
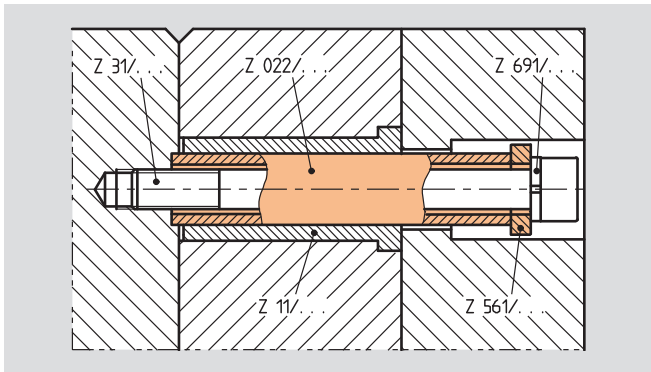
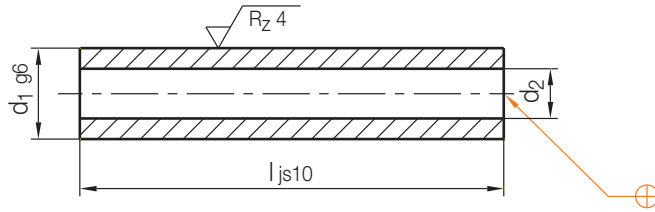


Z022/...

Führungshülse  
Guide sleeve  
Douille de guidage

Mat.: ≈ 1.0715/580 + 40 HV 30

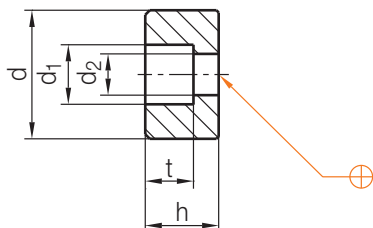


$d_2$	$d_1$	$l$	Nr./No.
6,2	10	20	Z022/10x 20
		30	30
		40	40
		50	50
		60	60
		70	70
		80	80
		100	100
		120	120
		140	140
8,3	14	30	Z022/14x 30
		40	40
		50	50
		60	60
		70	70
		80	80
		100	100
		120	120
		140	140
		160	160
10,4	18	40	Z022/18x 40
		60	60
		80	80
		100	100
		100	100

$d_2$	$d_1$	$l$	Nr./No.		
10,4	18	120	Z022/18x120		
		140	140		
		160	160		
		180	180		
		200	200		
		220	220		
		240	240		
		12,5	24	60	Z022/24x 60
				80	80
				100	100
120	120				
140	140				
160	160				
16,5	30	80	Z022/30x 80		
		100	100		
		120	120		
		140	140		
		160	160		
		180	180		
		220	220		
		260	260		
		300	300		
		300	300		

### Z56/...

Haltescheibe  
 Stop disc  
 Rondelle de butée  
 Mat.: 1.1730/690 N/mm<sup>2</sup>



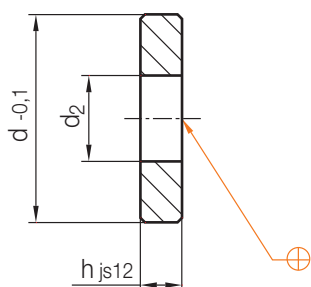
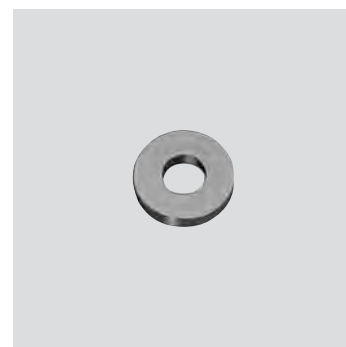
3

d <sub>1</sub>	d <sub>2</sub>	t	d	h	Nr./No.
11	6,6	8,4	<b>15</b>	<b>10</b>	Z56/15x10
14,5	9	11	<b>22</b>	<b>14</b>	22x14
17,5	11	13,5	<b>36</b>	<b>20</b>	36x20

d <sub>1</sub>	d <sub>2</sub>	t	d	h	Nr./No.
20	14	15,5	<b>46</b>	<b>25</b>	Z56/46x25
26	18	21	<b>56</b>	<b>32</b>	56x32

### Z561/...

Scheibe  
 Washer  
 Rondelle  
 Mat.: 1.0715/950 N/mm<sup>2</sup>



d <sub>2</sub>	d	h	Nr./No.
6,2	<b>14</b>	<b>3</b>	Z561/14x3
8,3	<b>18</b>	<b>4</b>	18x4
10,4	<b>24</b>	<b>5</b>	24x5

d <sub>2</sub>	d	h	Nr./No.
12,5	<b>30</b>	<b>6</b>	Z561/30x6
16,5	<b>40</b>	<b>8</b>	40x8