

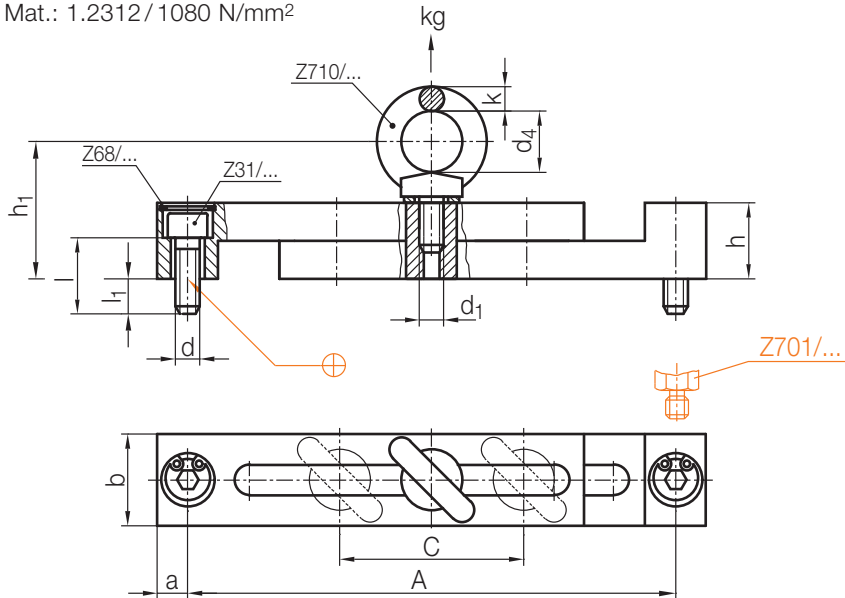
### Z70/...

Transportbrücke  
Lifting device  
Bride de transport

Mat.: 1.2312/1080 N/mm<sup>2</sup>



2

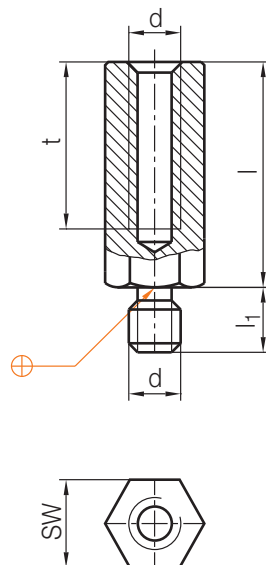


$l_1$	Z31/dx $l$	$a$	$h$	$h_1$	$d_4$	$k$	$b$	$d_1$	$C$	$A$		kg	Typ	Nr./No.
										max.	min.			
11,5	Z31/ 8x25	10	25	43	20	8	30	M 8	40/ 80	180	140	140	<b>1</b>	Z70/1
14,5	Z31/10x30	12,5	30	52	25	10	40	M10	50/140	300	210	230	<b>2</b>	2
19	Z31/16x40	17,5	40	70	35	14	60	M16	60/195	430	295	700	<b>3</b>	3

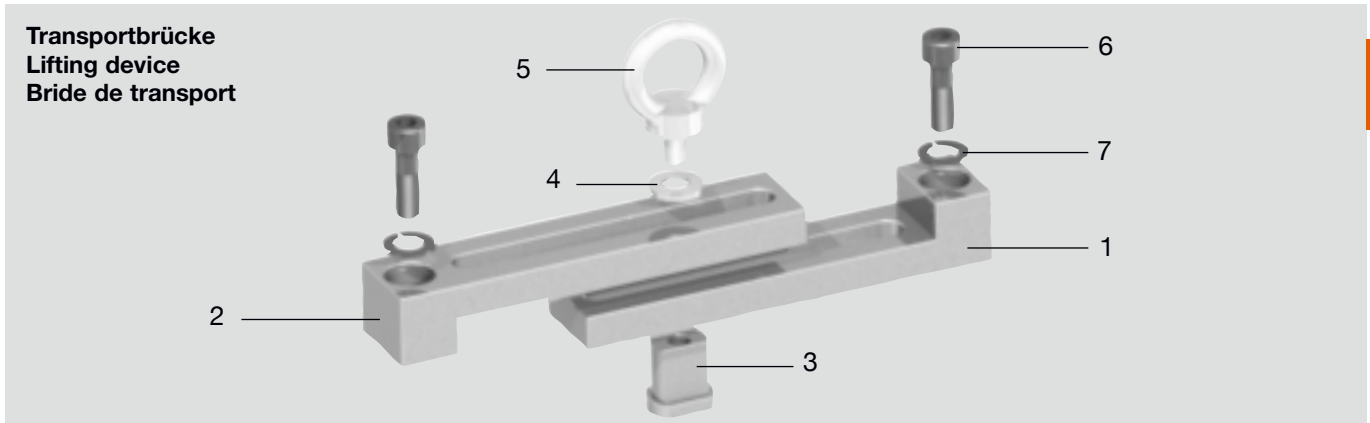
### Z701/...

Distanzstück  
Distance bolt  
Entretoise à tout fileté

Mat.: 1.0501/900 N/mm<sup>2</sup>



$t$	$l_1$	$d$	SW	$l$	Nr./No.
27	15	<b>M 8</b>	<b>19</b>	<b>50</b>	Z701/ 8/19x50
		<b>M10</b>	<b>22</b>		10/22x50
32	20	<b>M16</b>	<b>27</b>		16/27x50



Pos.	Benennung	Designation	Désignation	Stück Quantity Pièce
1	Unterteil	Lower part	Pièce inférieure	1
2	Oberteil	Upper part	Pièce supérieure	1
3	Nutenstein	Slot nut	Entretoise de blocage	1
4	Spannscheibe	Locking washer	Rondelle de serrage	1
5	Ringschraube	Lifting eye bolt	Anneau de levage	1
6	Zylinderschraube	Socket head cap screw	Vis à tête cylindrique à 6 pans creux	2
7	Sicherungsring	Circlip	Circlip	2

Nr./No.	3 Z70/...	4 Z70/...	5 Z710/...	6 Z31/...	7 Z68/...
Z70/1	... 1-03/E	... 1-04/E	... 8	... 8x25	... 16x1
2	... 2-03/E	... 2-04/E	...10	...10x30	... 20x1
3	... 3-03/E	... 3-04/E	...16	...16x40	... 28x1,2

Pos. 1+2 (Ober-/ Unterteil)  
sind nicht als Ersatzteile verfügbar.

Pos. 1+2 (upper/lower part)  
are not available as spare parts.

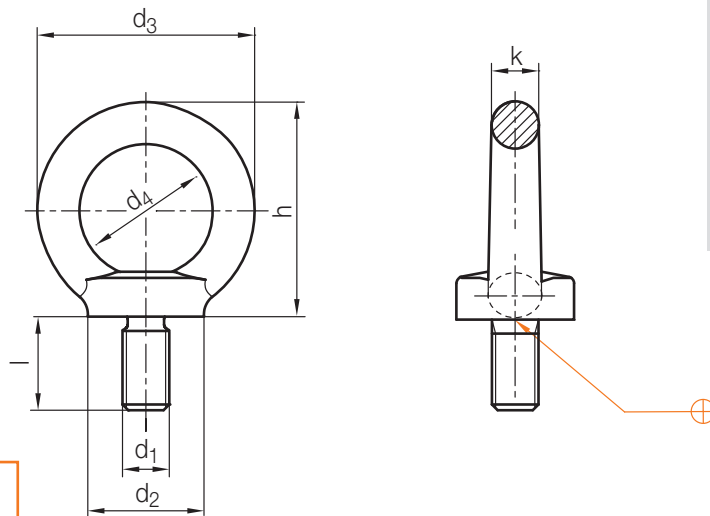
Pos. 1+2 (Pièces inférieure/supérieure)  
ne sont pas disponible en pièce  
détachée.

## Z710/...

Ringschraube  
Lifting eye bolt  
Anneau de levage

Mat : C15E  
DIN 580

Max. °C: 200

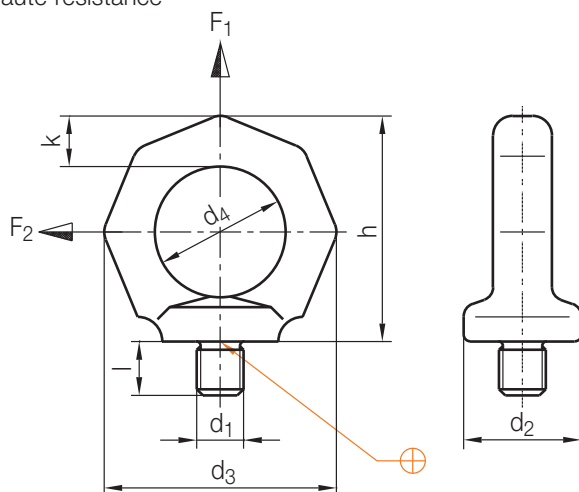


max. kg	max. kg	l	d <sub>2</sub>	d <sub>3</sub>	d <sub>4</sub>	h	k	d <sub>1</sub>	Nr./No.
140	100	13	20	36	20	36	8	<b>M 8</b>	Z710/ 8
230	170	17	25	45	25	45	10	<b>M10</b>	10
340	240	20,5	30	54	30	53	12	<b>M12</b>	12
700	500	27	35	63	35	62	14	<b>M16</b>	16
1200	860	30	40	72	40	71	16	<b>M20</b>	20
1800	1290	36	50	90	50	90	20	<b>M24</b>	24
3200	2300	45	65	108	60	109	24	<b>M30</b>	30

## Z711/...

Ringschraube, hochfest  
Lifting eye bolt, high strength  
Anneau de levage (vis), haute résistance

Mat.: 1.6541



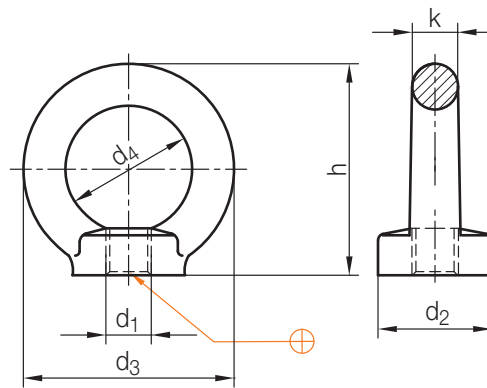
F <sub>1</sub> max. kg	F <sub>2</sub> max. kg	l	d <sub>4</sub>	d <sub>3</sub>	d <sub>2</sub>	h	k	d <sub>1</sub>	Nr./No.
1000	250	12	25	45	25	45	10	<b>M10</b>	Z711/10
1600	400	15	30	54	30	53	12	<b>M12</b>	12
3000	750	17	35	63	35	62	14	<b>M14</b>	14
4000	1000	19		67		64	16	<b>M16</b>	16
6000	1500	30	40	80	40	75	20	<b>M20</b>	20
8000	2000	36	50	90	50	90		<b>M24</b>	24
12000	3000	45	60	108	65	109	24	<b>M30</b>	30

Z7120/...

Ringmutter  
Eye nut  
Ecrou de levage

Mat.: C 15 E  
DIN 582

Max. °C: 200

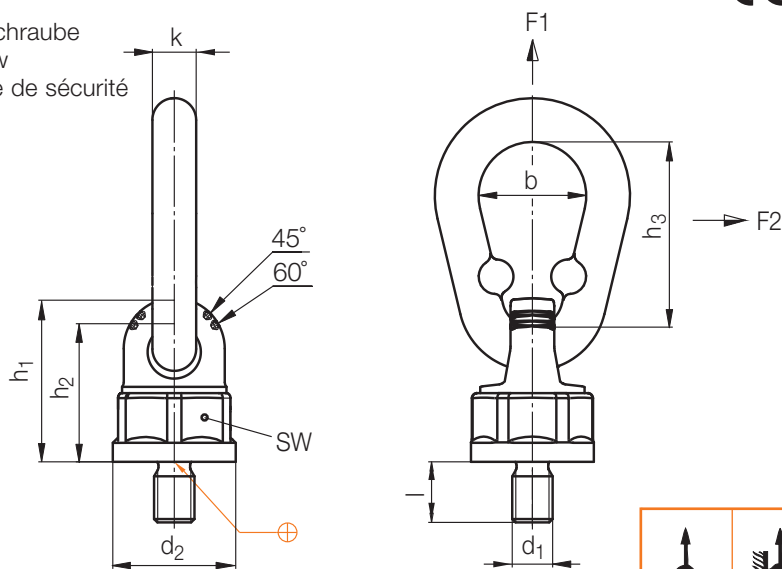
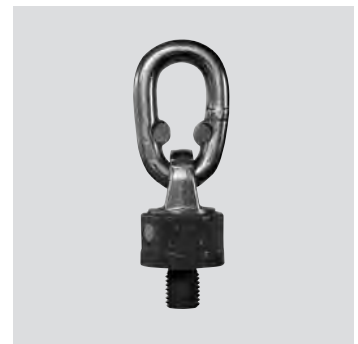


2

max. kg	max. kg	d <sub>2</sub>	d <sub>3</sub>	d <sub>4</sub>	h	k	d <sub>1</sub>	Nr./No.	
140	100	20	36	20	36	8	<b>M 8</b>	Z7120/ 8	
230	170	25	45	25	45	10	<b>M10</b>	10	
340	240	30	54	30	53	12	<b>M12</b>	12	
700	500	35	63	35	62	14	<b>M16</b>	16	
1200	860	40	72	40	71	16	<b>M20</b>	20	
1800	1290	50	90	50	90	20	<b>M24</b>	24	
3200	2300	65	108	60	109	24	<b>M30</b>	30	

Z721/...

Sicherheitsringschraube  
Safety-eye screw  
Anneau de levage de sécurité



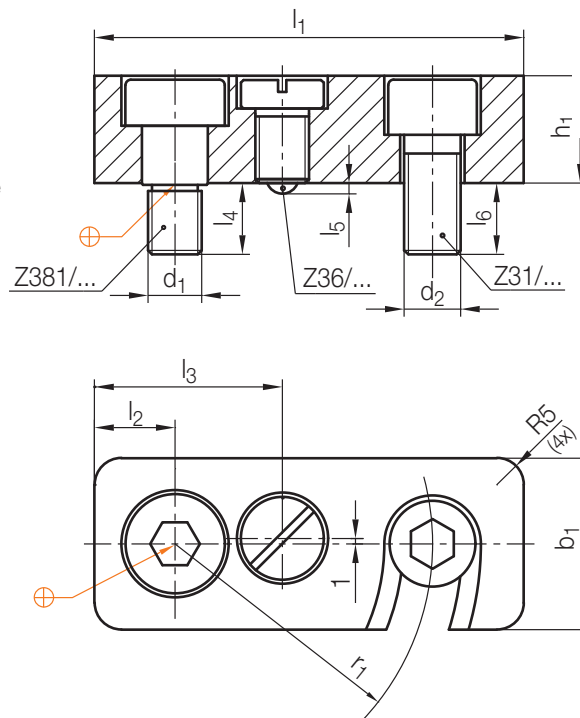
b	d <sub>2</sub>	h <sub>1</sub>	h <sub>2</sub>	h <sub>3</sub>	k	SW	d <sub>1</sub>	l	F <sub>1</sub> [t]	F <sub>2</sub> [t]	Nr./No.
32	36,5	48	41	55	13	34	<b>M10</b>	<b>18</b>	1	<b>0,5</b>	Z721/10x18 x0,5
									1,4	<b>0,7</b>	12x18 x0,7
									2	<b>1</b>	14x20 x1
									2,8	<b>1,4</b>	16x20 x1,4
									3,4	<b>1,7</b>	20x30 x1,7
34	52	67	57	70	16	46	<b>M20</b>	<b>30</b>	5	<b>2,5</b>	20x30 x2,5
									8	<b>4</b>	24x30 x4
45	57	75	63	85	18	50	<b>M24</b>	<b>35</b>	8	<b>4</b>	24x30 x4
									12	<b>6,7</b>	30x35 x6,7
	70	94,5	78		20	65	<b>M30</b>				

## Z73/...

Werkzeugsicherung  
Tool safety device  
Sécurité d'outillage

Mat.: 1.2312/1080 N/mm<sup>2</sup>

orange-pulverbeschichtet  
powder coated  
revêtement à la poudre

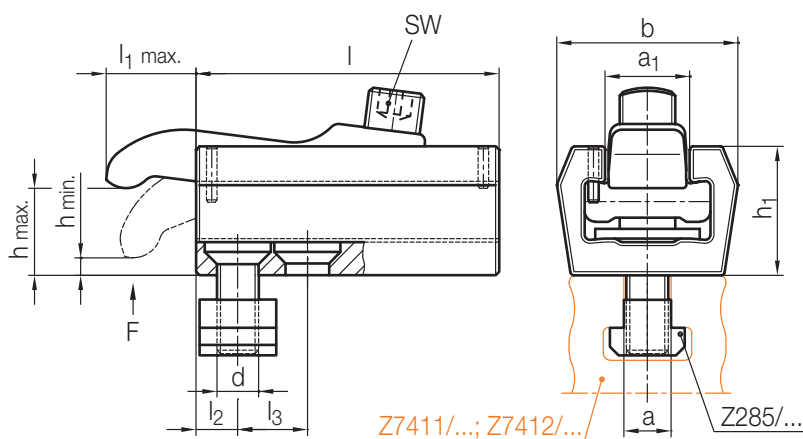



Z381/...	Z31/...	Z36/...	d <sub>1</sub>	d <sub>2</sub>	r <sub>1</sub>	l <sub>2</sub>	l <sub>3</sub>	l <sub>4</sub>	l <sub>5</sub>	l <sub>6</sub>	h <sub>1</sub>	b <sub>1</sub>	l <sub>1</sub>	Nr./No.
Z381/ 6x 6	Z31/ 6x14	Z36/ 5x12	M 6	M 6	30	10	24	9	0,9	8	<b>12</b>	<b>20</b>	<b>50</b>	Z73/12x20x50
8x10	8x18	8x16	M 8	M 8	38	13	30	11	1,5	11	<b>16</b>	<b>25</b>	<b>63</b>	16x25x63
10x12	10x22	10x20	M10	M10	48	15	35	13	2	13	<b>20</b>	<b>32</b>	<b>80</b>	20x32x80

## Z741/...

Kraftspanner, flache Ausführung  
Power clamp, flat design  
Bride de force, version plate

Mat.: ≈ 1.0501

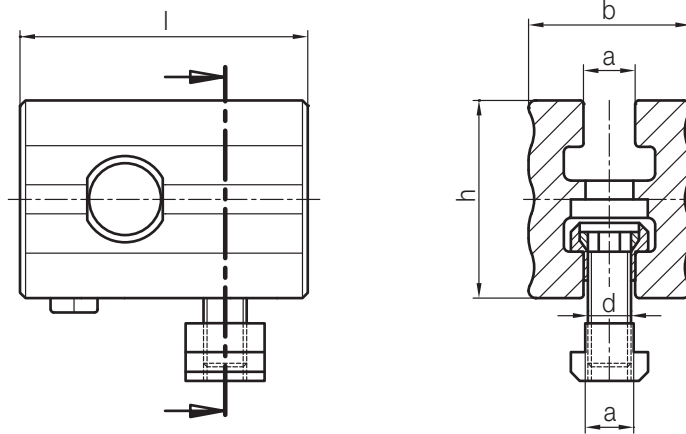


Nm	F <sub>max.</sub> [kN]	SW	a <sub>1</sub>	b	d	h min.	h <sub>1</sub>	l <sub>1</sub> max.	l <sub>2</sub>	l <sub>3</sub>	 a <sub>1</sub> h	l	h max.	Nr./No.
60	30	8	24	52	M12	5	37	26	12	20	<b>14</b>	<b>75</b>	<b>26</b>	Z741/14x 75x26
	50							<b>115</b>				<b>40</b>	14x115x40	
100	40	10	28	60	M16	5	42	30	15	25	<b>18</b>	<b>85</b>	<b>30</b>	18x 85x30
	58							<b>130</b>				<b>46</b>	18x130x46	
150	50	12	34	75	M20	5	48	32	19	38	<b>22</b>	<b>100</b>	<b>35</b>	22x100x35
	65							<b>150</b>				<b>51</b>	22x150x51	


## Z7411/...

Distanzblock  
Spacer block  
Bloc écarteur

Mat.: 3.4365/500–530 N/mm<sup>2</sup>



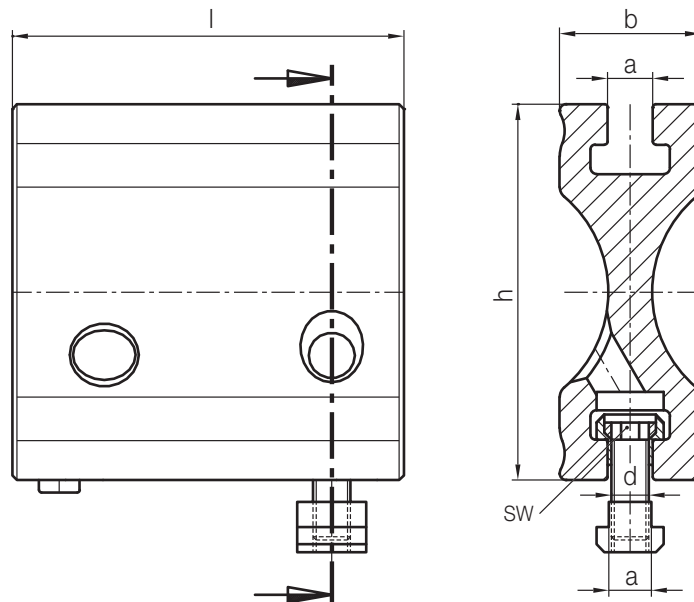
2

Z741/...	Z742/...	Z743/...	b	d		h	l	Nr./No.
14x 75x26	14x 75x45	14x 95x50	45	M12	14	55	80	Z7411/14x55x 80
14x115x40	14x115x67	14x135x70					125	14x55x125
18x 85x30	18x 85x48	18x110x60	60	M16	18	70	80	18x70x 80
18x130x46	18x130x75	18x155x80					125	18x70x125
22x100x35	22x100x55	22x125x70	70	M20	22	90	100	22x90x100
22x150x51	22x150x85	22x175x90					180	22x90x180

## Z7412/...

Distanzblock  
Spacer block  
Bloc écarteur

Mat.: 3.4365/  
500–530 N/mm<sup>2</sup>

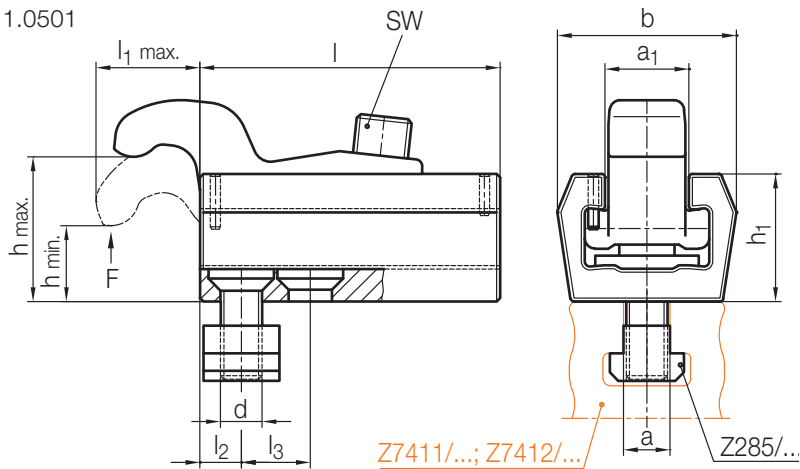


Z741/...	Z742/...	Z743/...	b	d	SW		h	l	Nr./No.
14x 75x26	14x 75x45	14x 95x50	45	M12	8	14	120	80	Z7412/14x120x 80
14x115x40	14x115x67	14x135x70						125	14x120x125
18x 85x30	18x 85x48	18x110x60	60	M16	10	18	130	80	18x130x 80
18x130x46	18x130x75	18x155x80						125	18x130x125
22x100x35	22x100x55	22x125x70	70	M20	12	22	180	100	22x180x100
22x150x51	22x150x85	22x175x90						180	22x180x180

### Z742/...

Kraftspanner, gekröpfte Ausführung  
 Power clamp, gorse neck desing  
 Bride de force, version coudee

Mat.: ≈ 1.0501

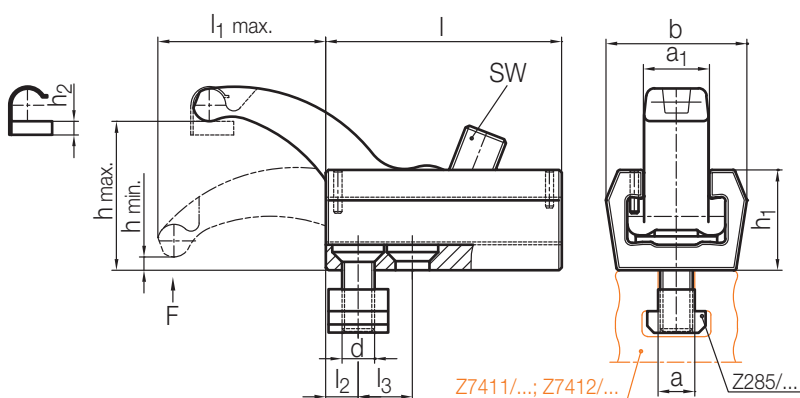


Nm	$F_{\text{max.}}$ [kN]	SW	$a_1$	b	d	h min.	$h_1$	$l_1 \text{ max.}$	$l_2$	$l_3$	$\frac{a_1}{a}$	l	h max.	Nr./No.
60	30	8	24	52	M12	22	37	26	12	20	14	75	45	Z742/14x 75x45
	35					50		28					115	67
100	40	10	28	60	M16	25	42	30	15	25	18	85	48	18x 85x48
	40					58		32					130	75
150	50	12	34	75	M20	28	48	32	19	38	22	100	55	22x100x55
	45					65		150					85	22x150x85

### Z743/...

Kraftspanner, hohe Ausführung  
 Power clamp, high design  
 Bride de force, version haute

Mat.: ≈ 1.0501

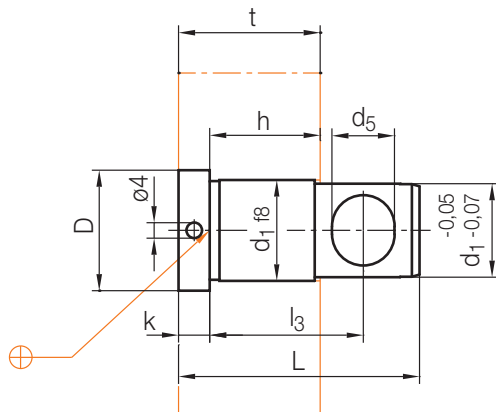


Nm	$F_{\text{max.}}$ [kN]	SW	$a_1$	b	d	h min.	$h_1$	$h_2$	$l_1 \text{ max.}$	$l_2$	$l_3$	$\frac{a_1}{a}$	l	h max.	Nr./No.
60	20	8	24	52	M12	5	37	5	62	12	-	14	95	50	Z743/14x 95x50
	19								90					24	135
120	26	10	28	60	M16	42	42	-	72	15	-	18	110	60	18x110x60
	22								105					28	155
150	30	12	34	75	M20	48	8	8	85	19	-	22	125	70	22x125x70
	28								110					34	175

### Z762/...

Spannbolzen  
Clamping bolt  
Colonne de serrage

Mat.: 1.2343/40 + 2 HRC



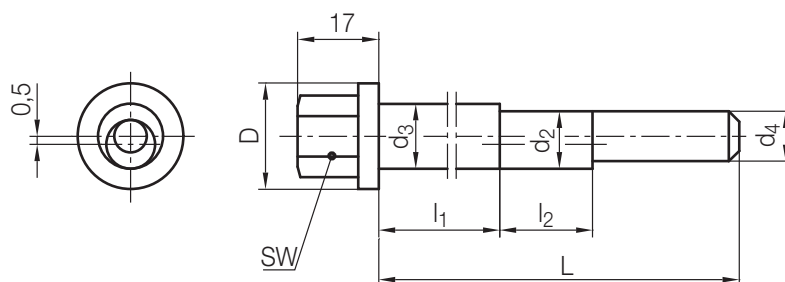
2

d <sub>5</sub>	D	k	l <sub>3</sub>	h	t	d <sub>1</sub>	L	Nr./No.
14	27	8	23,5	14	22	<b>22</b>	<b>43</b>	Z762/22x43
			28,5	19	27		<b>48</b>	22x48
16	31	8	30,5	28	36	<b>26</b>	<b>53</b>	26x53
			39,5				<b>62</b>	26x62

### Z763/...

Exenterbolzen  
Eccentric bolt  
Colonne exentrique

Mat.: 1.2718/52 + 2 HRC



SW	l <sub>1</sub>	l <sub>2</sub>	D	d <sub>4</sub>	d <sub>2</sub>	d <sub>3</sub>	L	Nr./No.
17	66	20	20	12	13	<b>14</b>	<b>113</b>	Z763/14x113
	86						<b>133</b>	14x133
19	109	24	22	14	15	<b>16</b>	<b>164</b>	16x164
	134						<b>189</b>	16x189