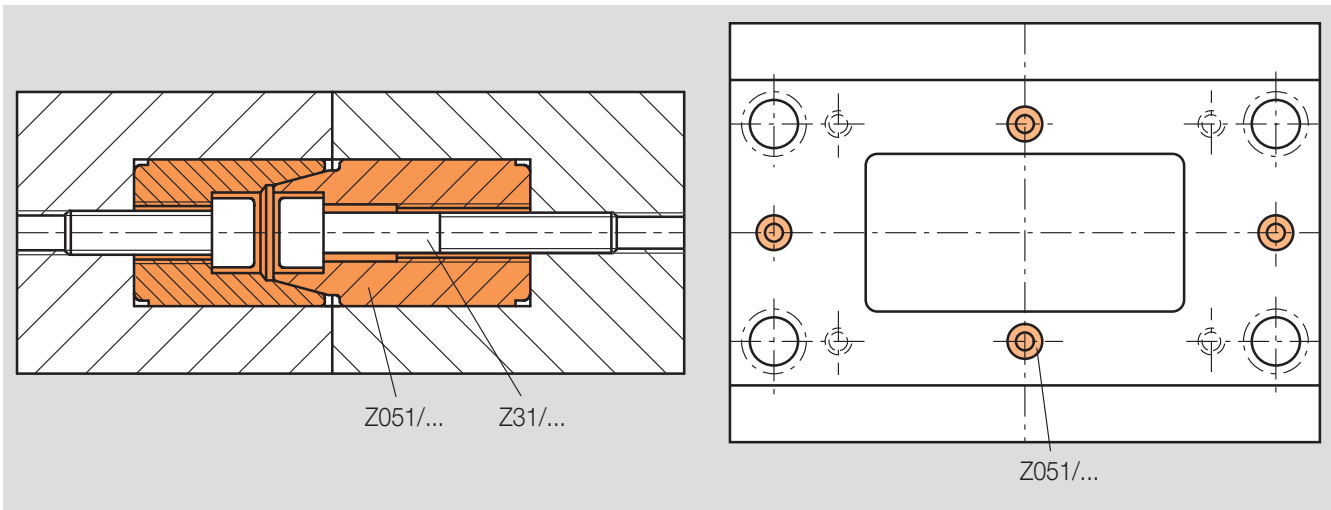
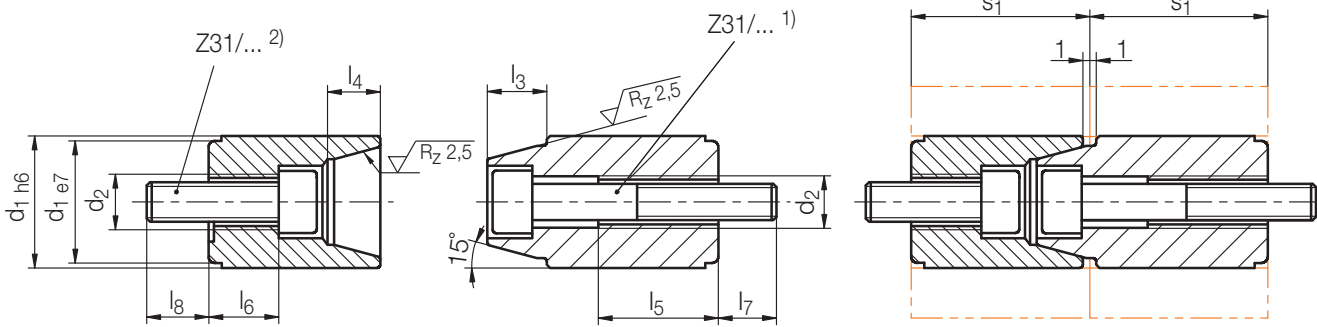


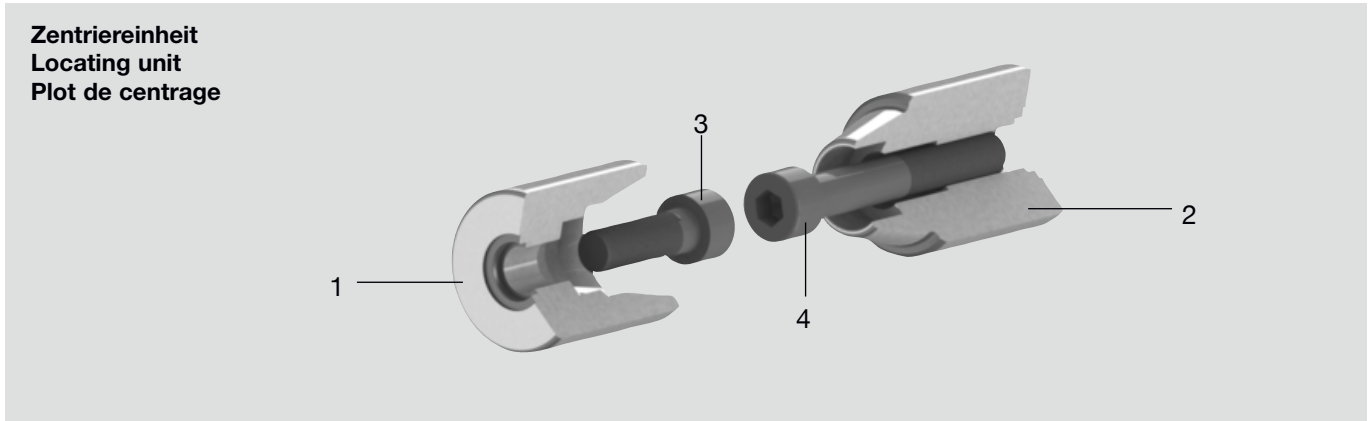
Z051/...

Zentriereinheit, rund
Locating unit, round
Plot de centrage

Mat.: 1.2067 / 54 ± 2 HRC
≈ DIN ISO 8406



Z31/... 2)	Z31/... 1)	l ₈	l ₇	l ₆	l ₅	l ₄	l ₃	d ₂	s ₁	d ₁	Nr./No.	
3x16	3x25	7,5	8	8,5	9,6	5	4,5	M4	17	12	Z051/12	
4x14	4x25	8	7,5	6	12,4	7	6	M5		14	14	
				5,8						16	16	
6x20	6x40	9,5	12	10,6	19,7	10	9	M8	27	20	20	
				9,2		11				10	25	25
				11	11	9,2	11			10	26	26
											30	30
8x25	8x55	13	15	12,2	25	16	14	M10	36	32	32	
										42	42	
8x30	8x70		16	16,8	27	20	18		46	42	42	



Pos.	Benennung	Designation	Désignation	Stück Quantity Pièce
1	Zentrierstück, aufnehmend	Centring piece, female	Elément de centrage, récepteur	1
2	Zentrierstück, eintauchend	Centring piece, male	Elément de centrage, plongeant	1
3	Zylinderschraube	Hexagon socket head cap screw	Vis à tête cylindrique à 6 pans creux	1
4	Zylinderschraube	Hexagon socket head cap screw	Vis à tête cylindrique à 6 pans creux	1

Nr./No.	1 Z0511/...	2 Z0512/...	3 Z31/...	4 Z31/...
Z051/12	... 12/E	... 12/E	... 3x16	... 3x25
14	... 14/E	... 14/E	... 4x14	... 4x25
16	... 16/E	... 16/E	... 6x20	... 6x40
20	... 20/E	... 20/E		
25	... 25/E	... 25/E		
26	... 26/E	... 26/E		
30	... 30/E	... 30/E	... 8x25	... 8x55
32	... 32/E	... 32/E	... 8x30	... 8x70
42	... 42/E	... 42/E		

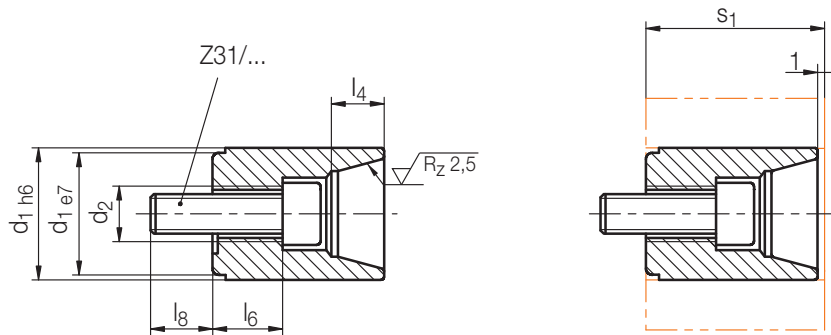
Z0511/...

Zentrierstück, aufnehmend, rund
 Centring piece, female component, round
 Élément de centrage, récepteur, rond

Mat.: 1.2067 / 54 ± 2 HRC
 ≈ DIN ISO 8406



1



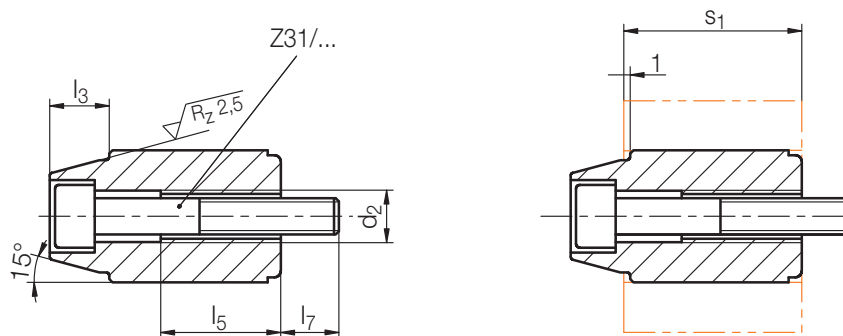
Neu / New / Nouveau

Z31/...	l ₈	l ₆	l ₄	d ₂	s ₁	d ₁	Nr./No.
...3x16	7,5	8,5	5	M4	17	12	Z0511/12
...4x14	8	6	7	M5		14	14
		5,8			16	16	
...6x20	9,5	10,6	10	M8	27	20	20
		11	9,2			11	25
	26	26					
...8x25	13	12,2	16	M10	36	30	30
		32	32				
...8x30		16,8	20		46	42	42

Z0512/...

Zentrierstück, eintauchend, rund
 Centring piece, male component, round
 Élément de centrage, plongeant, rond

Mat.: 1.2067 / 54 ± 2 HRC
 ≈ DIN ISO 8406



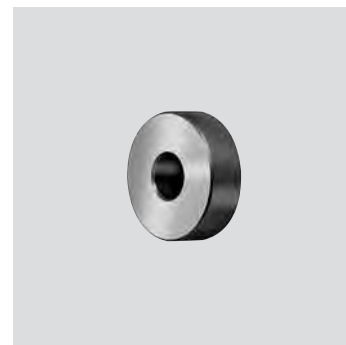
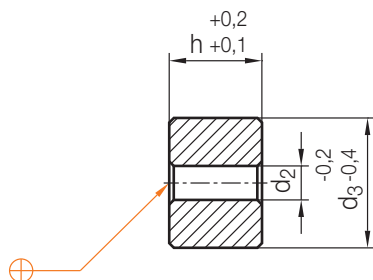
Neu / New / Nouveau

Z31/...	l ₇	l ₅	l ₃	d ₂	s ₁	d ₁	Nr./No.
...3x25	8	9,6	4,5	M4	17	12	Z0512/12
...4x25	7,5	12,4	6	M5		14	14
						16	16
...6x40	12	19,7	9	M8	27	20	20
	11		10			25	25
			26			26	
...8x55	15	25	14	M10	36	30	30
			32			32	
...8x70	16	27	18			46	42

Z055/...

Distanzscheibe
Distance Disc
Entretoise

Mat.: 1.0715/50 ± 2 HRC



1

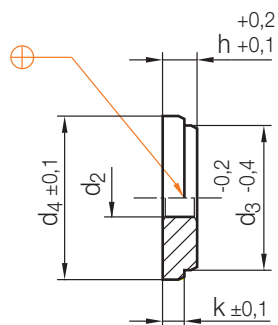
d ₂	d ₃	h	Nr./No.
4,5	12	10	Z055/12x10
5,5	14	5	14x 5
		10	14x10
		14	14x14
		19	14x19
		16	5
10	16x10		
19	16x19		
9	20	9	20x 9
		10	20x10
		20	20x20
	25	9	25x 9
		10	25x10
		20	25x20

d ₂	d ₃	h	Nr./No.
9	26	9	Z055/26x 9
		10	26x10
		20	26x20
		30	26x30
11	30	10	30x10
		20	30x20
		30	30x30
	32	10	32x10
		20	32x20
		42	32x42
13,5	54	20	54x20
		40	54x40
		40	54x40
17,5	80	20	80x20
		40	80x40

Z056/...

Haltescheibe
Disc
Rondelle de butée

Mat.: 1.0715/50 ± 2 HRC

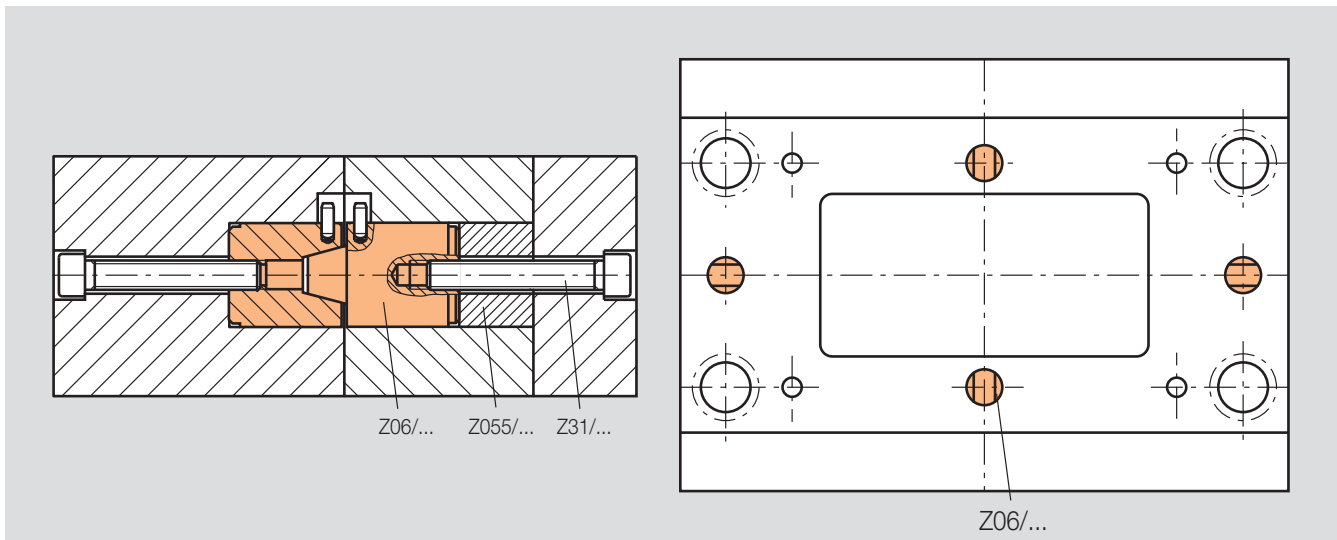
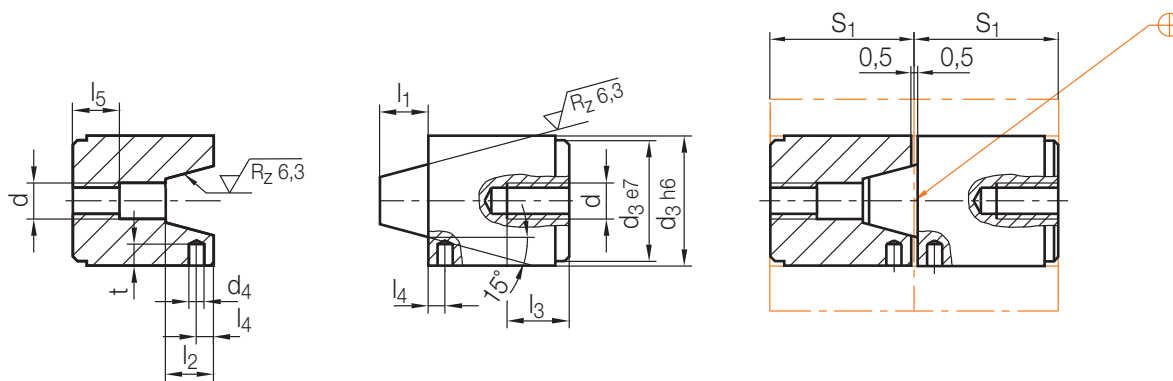


d ₄	d ₂	k	h	d ₃	Nr./No.
16	5,5	3,2	5	14	Z056/ 14
25,5	8,5	6,3	9	20	20
31,5				26	26
35,5	11		10	30	30
47,5				42	42

Z06/...

Zentriereinheit, flach
 Locating unit, flat
 Plot de centrage, plat

Mat.: 1.2343/49 ± 2 HRC



t	d ₄	d	l ₅	l ₄	l ₃	l ₂	l ₁	S ₁	d ₃	Nr./No.
5	4	M10	16,5	4,5	20	11,5	10,5	36	30	Z06/30
7	5		18,5	5,5		15,5	14,5	46	42	42
8	6	M12	20,5	7,5	25	18,5	17,5	56	54	54
11	8	M16	25,5		30	28,5	27,5	76	80	80

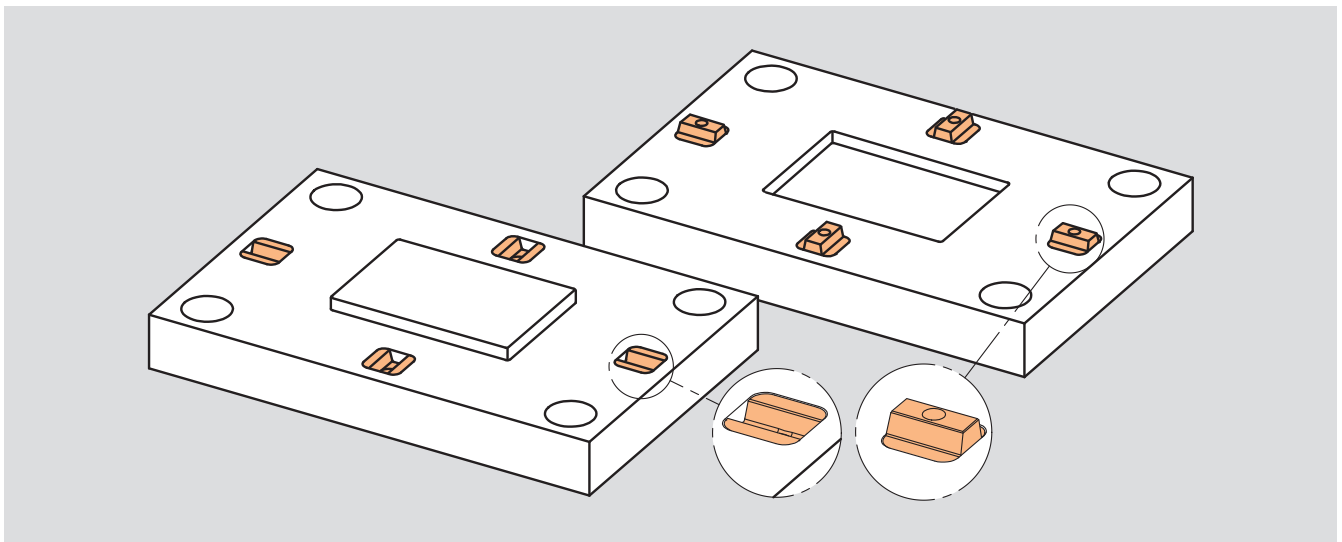
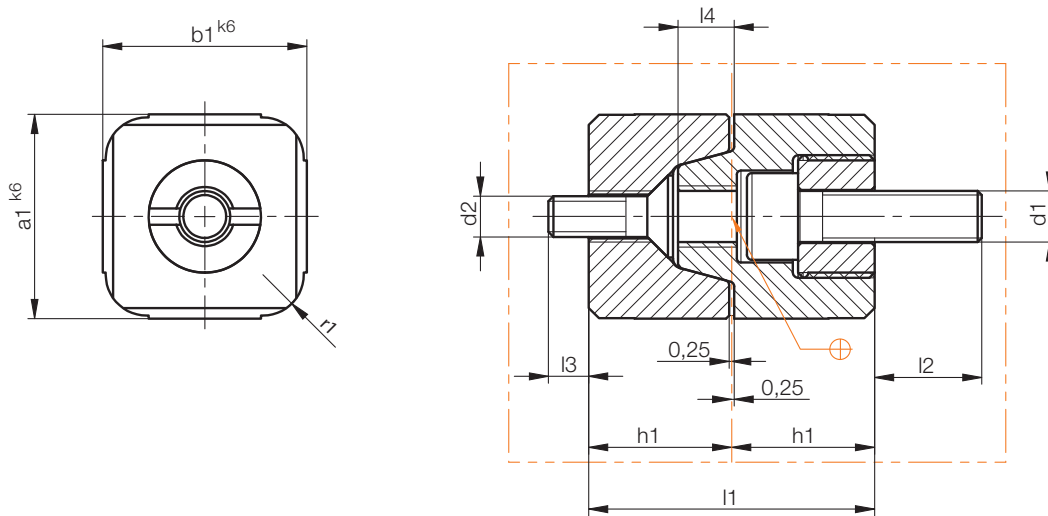
Z060/...

Zentriereinheit, Trapez
 Locating unit, trapezium
 Plot de centrage, trapèze

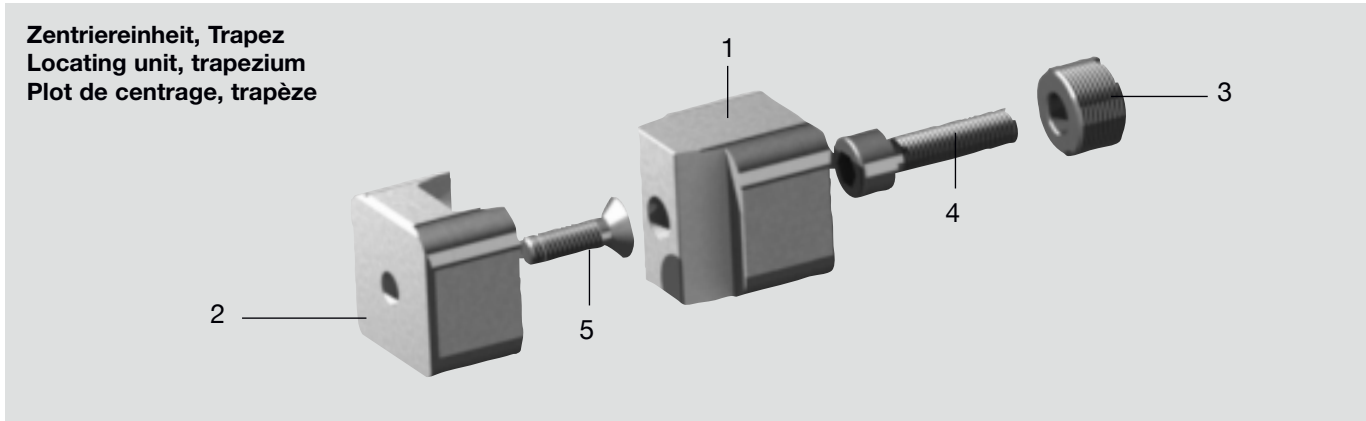
Mat.: 1.2343 / 53HRC



1



r1	d1	d2	h1	l1	l2	l3	l4	a1	b1	Nr./No.
4	M5	M4	14	28	12	4	5,5	20	20	Z060/20x20
5	M6	M5	16	32	13	8	7,5	25	25	25x25
6	M8	M6	18	36	15	12	9,5	32	32	32x32
	M10	M8	22,5	45	17	10	11,5	40	40	40x40

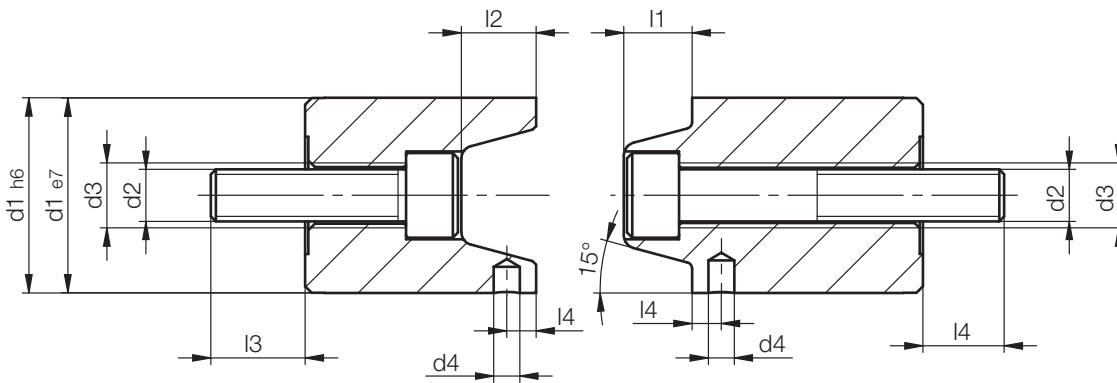


Pos.	Benennung	Designation	Désignation	Stück Quantity Pièce
1	Oberteil, eintauchend	Upper part, male	Partie supérieure, plongeant	1
2	Unterteil, aufnehmend	Lower part, female	Partie inférieure, récepteur	1
3	Gewinding	Thread ring	Anneau fileté	1
4	Zylinderschraube	Hexagon socket head cap screw	Vis à tête cylindrique à 6 pans creux	1
5	Senkkopfschraube	Countersunk socket head screw	Vis à tête fraisée à 6 pans creux	1

Nr. / No.	1 Z060/...	2 Z060/...	3 Z014/...	4 Z31/...	5 Z33/...
Z060/20x20	...20x20-01/E	...20x20-02/E	...12x1 / 7,5-02/B	...5x18	...4x12
25x25	...25x25-01/E	...25x25-02/E	...14x1 / 8,5-02/B	...6x22	...5x16
32x32	...32x32-01/E	...32x32-02/E	...18x1 / 9,5-02/B	...8x25	...6x20
40x40	...40x40-01/E	...40x40-02/E	...22x1,5/12,5-02/B	...10x30	...8x25

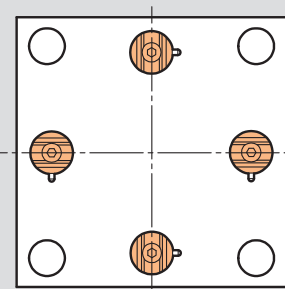
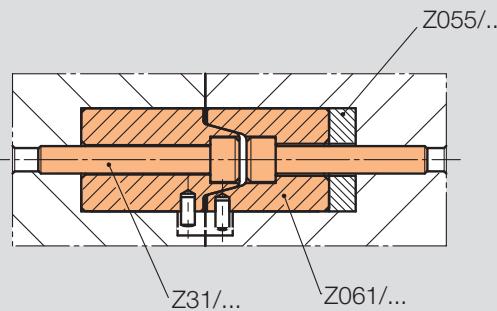
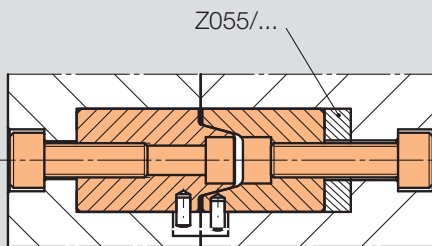
Z061/...

Zentriereinheit, flach
 Locating unit, flat
 Plot de centrage, plat
 Mat.: 1.2343/49 ± 2 HRC



Verschraubung Rückseite
 Screwed on from rear
 Vissage de l'arrière

Verschraubung Trennebene
 Screwed on from parting plane
 Vissage du plan de joint

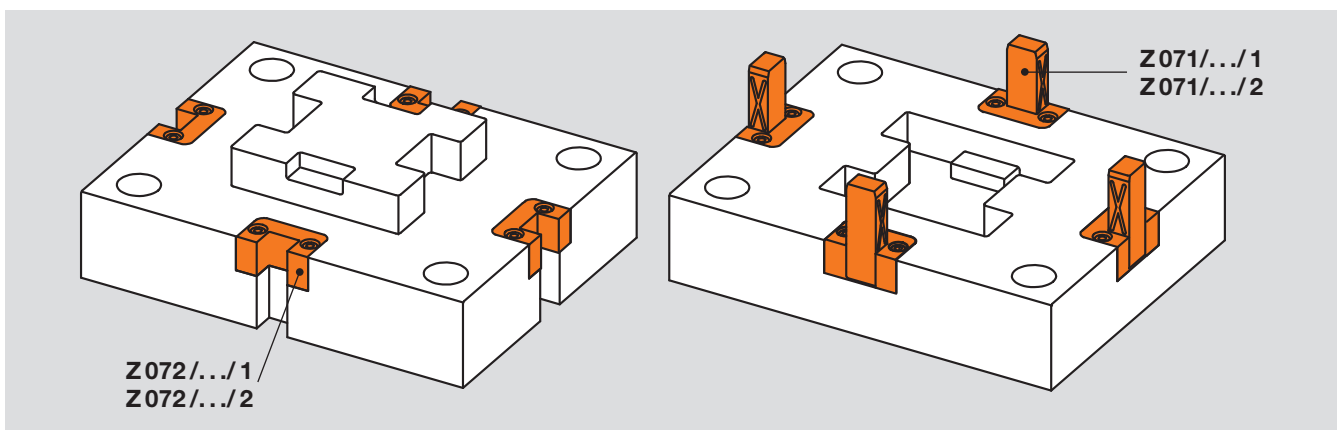
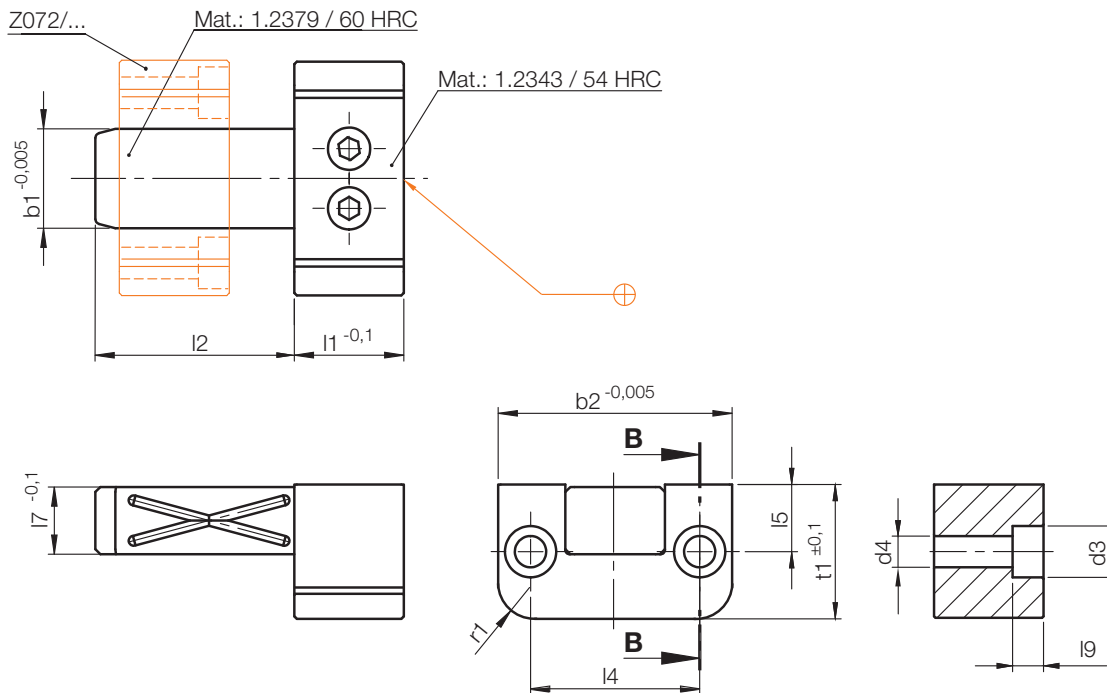


Neu / New / Nouveau

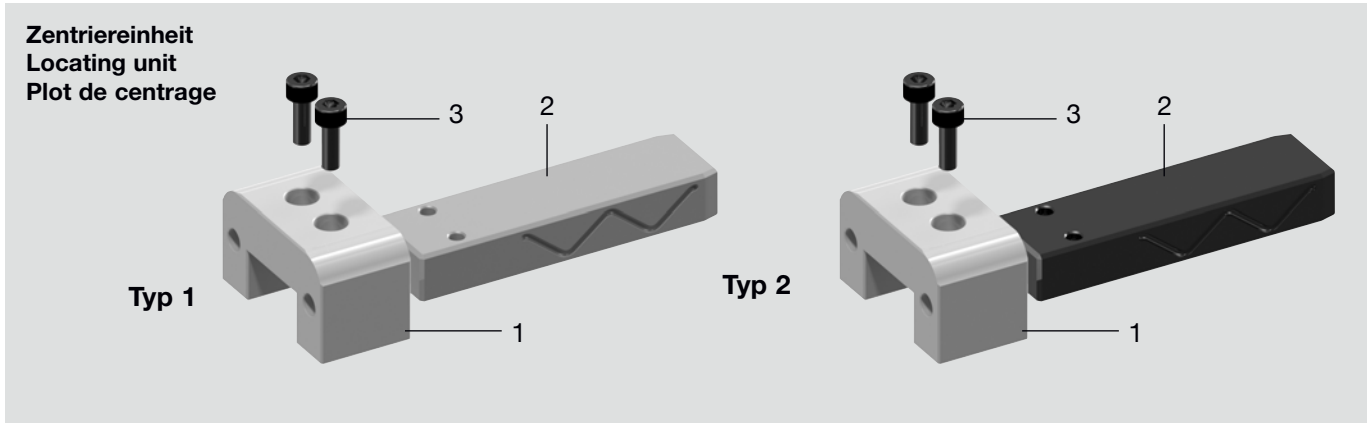
l4	l3	l2	l1	d4	d3	d2	d1	Nr. / No.
12,5	14,5	11,5	10,5	4	M 10	M 8	30	Z061/30
13,5	13,5	15,5	14,5	5			42	42
19,5	18,5	18,5	17,5	6	M 12	M 10	54	54
21,5	27,5	28,5	27,5	8	M 16	M 14	80	80

Z071/.../1

Rechteckführung
 Square guide bar
 Guidage rectangulaire



r1	t1	d4	d3	19	l7	l5	l4	b2	b1	l1	l2	Typ	Nr./No.
6	27	6,6	11	6,8	13,5	13,5	34	47	20	22	22	1	Z071/20x22x 22 /1
											40		Z071/20x22x 40 /1
8	30				14,5	15	39	52	25	27	63	1	Z071/25x27x 40 /1
											40		Z071/25x27x 40 /1
	40	9	15	9	19,5	20	49	67	32	36	40	1	Z071/32x36x 40 /1
											80		Z071/32x36x 80 /1
10	50	11	18	11	22,5	27	63	88	40	46	50	1	Z071/40x46x 50 /1
											100		Z071/40x46x 100 /1
	55	14	20	13	24,5	27,5	75	100	50	56	56	1	Z071/50x56x 56 /1
											112		Z071/50x56x 112 /1



Pos.	Benennung	Designation	Désignation	Stück Quantity Pièce
1	Führungsbacke	Guide jaw	Plot pour logement de guidage plat	1
2	Führungsblock	Guide block	Plot de guidage plat	1
3	Zylinderschraube	Hexagon socket head cap screw	Vis à tête cylindrique à 6 pans creux	2

Nr./No.	1 Z071/...	2 Z071/...	3 Z31/...
Z071/20x22x 22/1	...20x22-01/E	...20x22x 44/ 1-02/E	... 5x12
2		2-02/E	
20x22x 40/1	...20x22-01/E	...20x22x 62/ 1-02/E	... 5x14
2		2-02/E	
25x27x 40/1	...25x27-01/E	...25x27x 67/ 1-02/E	... 8x18
2		2-02/E	
25x27x 63/1	...25x27-01/E	...25x27x 90/ 1-02/E	...10x25
2		2-02/E	
32x36x 40/1	...32x36-01/E	...32x36x 76/ 1-02/E	...12x25
2		2-02/E	
32x36x 80/1	...32x36-01/E	...32x36x 116/ 1-02/E	...12x25
2		2-02/E	
40x46x 50/1	...40x46-01/E	...40x46x 96/ 1-02/E	...12x25
2		2-02/E	
40x46x100/1	...40x46-01/E	...40x46x 146/ 1-02/E	...12x25
2		2-02/E	
50x56x 56/1	...50x56-01/E	...50x56x 112/ 1-02/E	...12x25
2		2-02/E	
50x56x 112/1	...50x56-01/E	...50x56x 168/ 1-02/E	...12x25
2		2-02/E	

Typ 1 ohne DLC Beschichtung
Typ 2 mit DLC Beschichtung

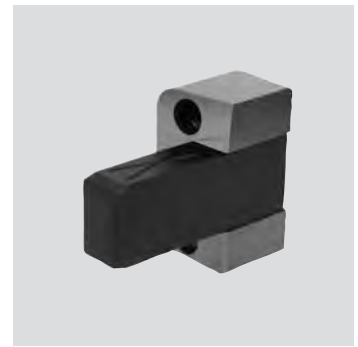
Type 1 without DLC coating
Type 2 with DLC coating

Type 1 sans revêtement DLC
Type 2 avec revêtement DLC

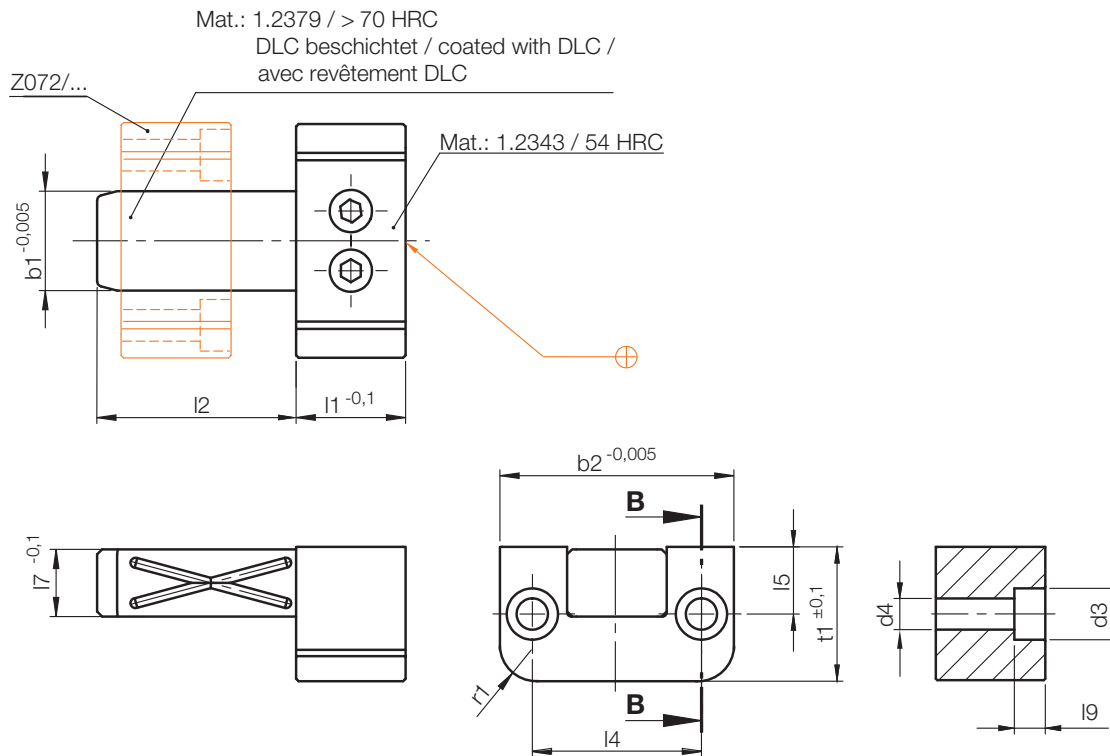
Z071/.../2

Rechteckführung
 Square guide bar
 Guidage rectangulaire

DLC beschichtet
 coated with DLC
 avec revêtement DLC



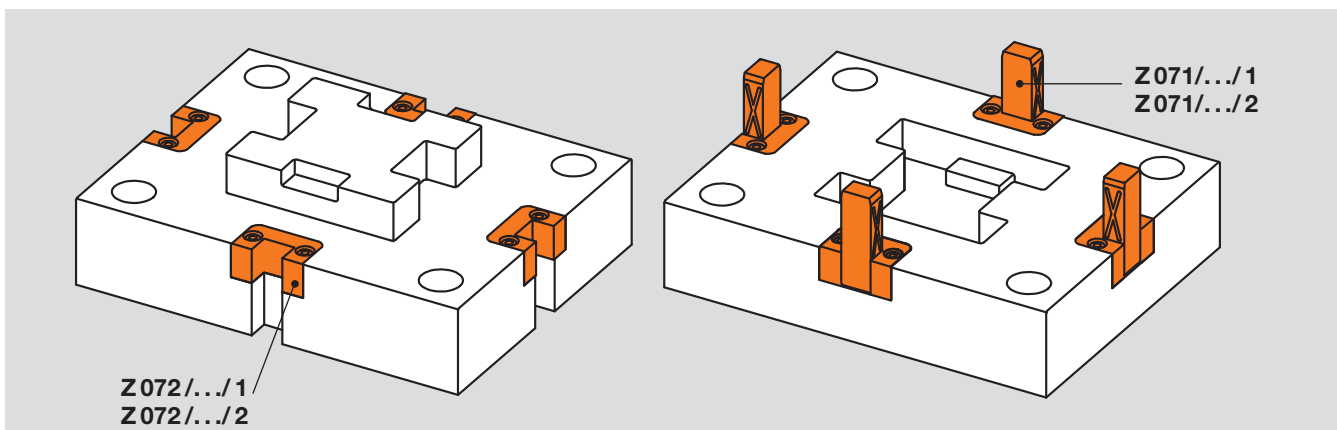
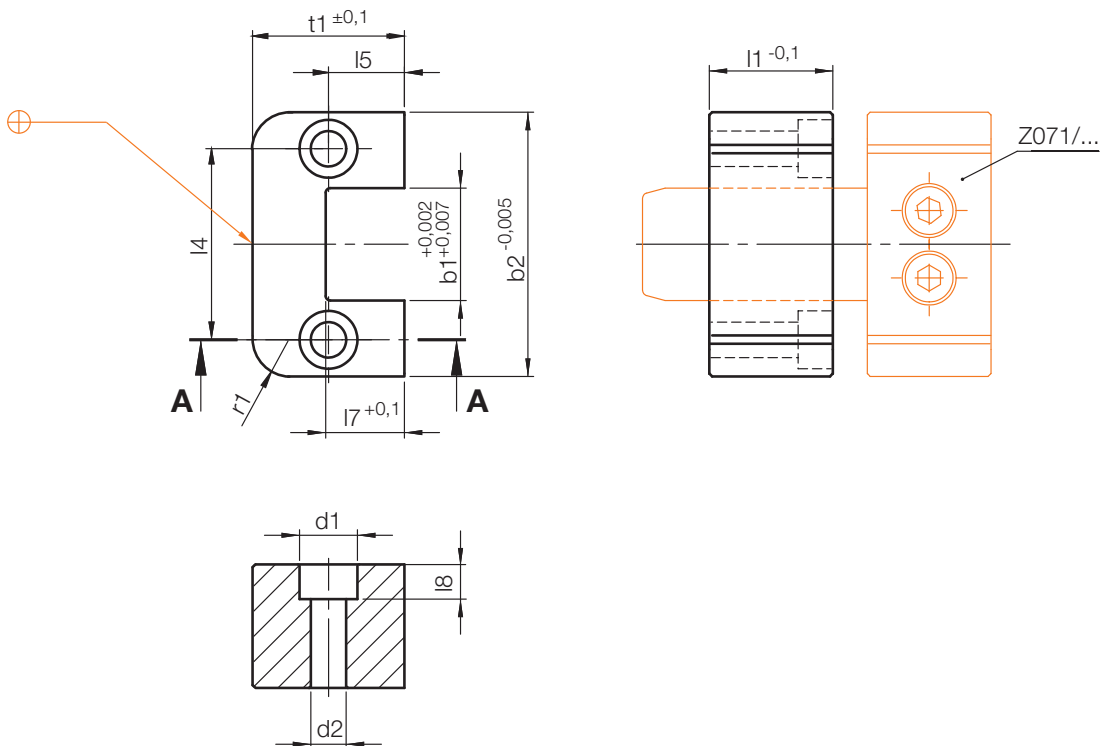
1



r1	t1	d4	d3	l9	l7	l5	l4	b2	b1	l1	l2	Typ	Nr./No.	
6	27	6,6	11	6,8	13,5	13,5	34	47	20	22	22	2	Z071/20x22x 22 /2	
											40			40
8	30				14,5	15	39	52	25	27	63		Z071/25x27x 40 /2	
											40			63
											80			80
10	50	11	18	11	22,5	27	63	88	40	46	50		Z071/40x46x 50 /2	
											100			100
	55	14	20	13	24,5	27,5	75	100	50	56	56		Z071/50x56x 56 /2	
											112			112

Z072/.../1

Führungsaufnahme
 Guide retainer
 Logement de guidage
 Mat.: 1.2379/56HRC+2



r1	t1	d2	d1	l8	l7	l5	l4	b2	b1	l1	Typ	Nr./No.
6	27	6,6	11	6,8	14	13,5	34	47	20	22	1	Z072/20x22 /1
8	30				15	15	39	52	25	27		25x27
	40	9	15	9	20	20	49	67	32	36		32x36
10	50	11	18	11	23	27	63	88	40	46		40x46
	55	14	20	13	25	27,5	75	100	50	56	50x56	

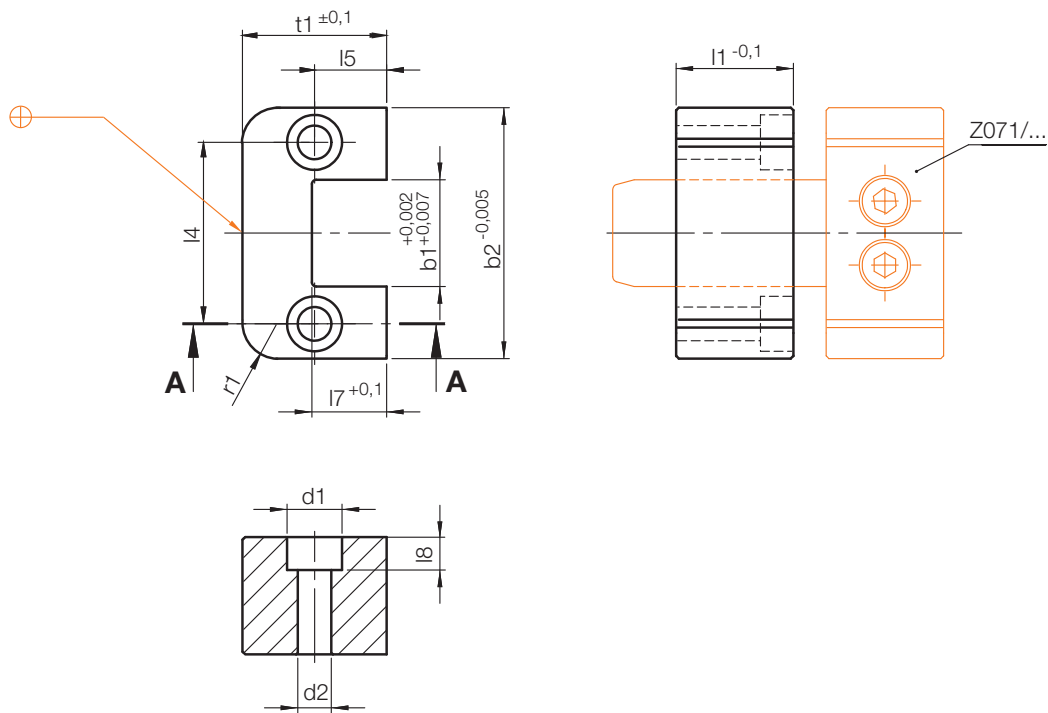
Z072/.../2

Führungsaufnahme
Guide retainer
Logement de guidage

Mat.: 1.2379/>70HRC
DLC beschichtet
coated with DLC
avec revêtement DLC



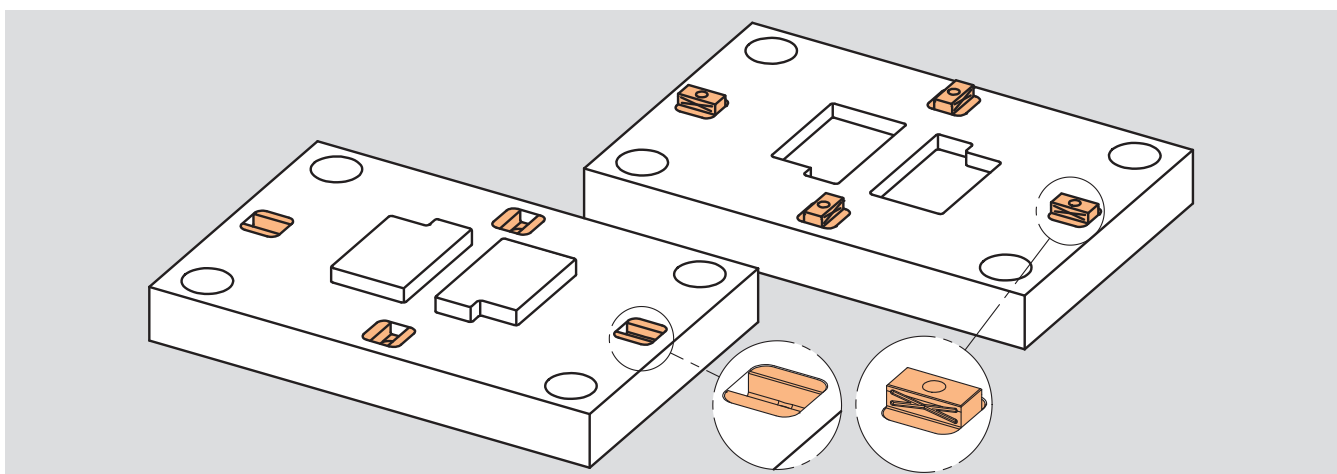
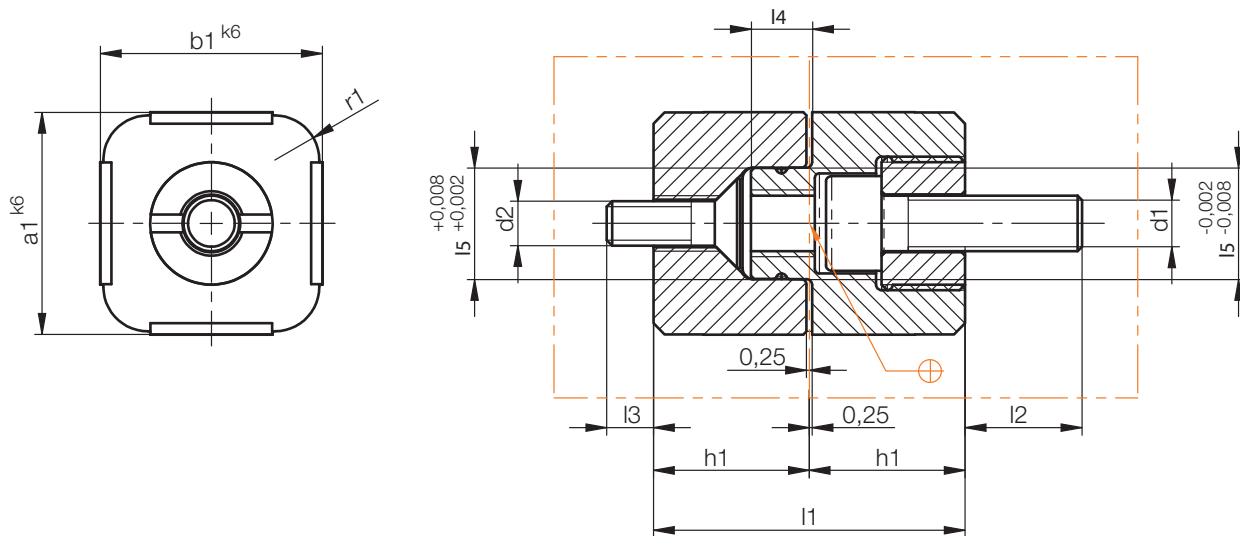
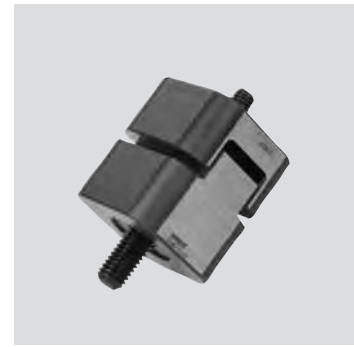
1



r1	t1	d2	d1	l8	l7	l5	l4	b2	b1	l1	Typ	Nr./No.
6	27	6,6	11	6,8	14	13,5	34	47	20	22	2	Z072/20x22 /2
8	30				15	15	39	52	25	27		25x27
	40	9	15	9	20	20	49	67	32	36		32x36
10	50	11	18	11	23	27	63	88	40	46		40x46
	55	14	20	13	25	27,5	75	100	50	56		50x56

Z080/...

Vorzentriereinheit
Pre-locating unit
Unité de précentrage
Mat.: 1.2343 / 53 HRC



r1	d1	d2	h1	l1	l2	l3	l4	l5	a1	b1	Nr./No.
4	M5	M4	14	28	12	4	5,5	10	20	20	Z080/20x20
5	M6	M5	16	32	13	8	7,5	12	25	25	25x25
6	M8	M6	18	36	15	12	9,5	16	32	32	32x32
	M10	M8	22,5	45	17	10	11,5	20	40	40	40x40

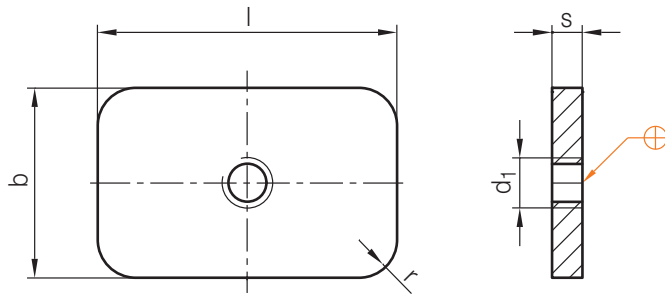
Z081/...

Distanzscheibe
 Spacer disc
 Entretoise

Mat.: 1.2842/53 ± 1 HRC



1



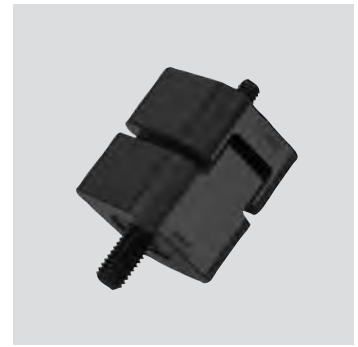
r	d ₁	b	l	s	Nr./No.
5	M6	20	20	3	Z081/20x20x3
			40		40
			20	3,05	20x20x3,05
			40		40
			20	3,1	20x20x3,1
			40		40
			20	3,15	20x20x3,15
			40		40
			20	3,2	20x20x3,2
			40		40
6	M8	25	25	3	Z081/25x25x3
			40		40
			25	3,05	25x25x3,05
			40		40
			25	3,1	25x25x3,1
			40		40
			25	3,15	25x25x3,15
			40		40
			25	3,2	25x25x3,2
			40		40

r	d ₁	b	l	s	Nr./No.	
7	M10	32	32	3	Z081/32x32x3	
			50		50	
			32	3,05	32x32x3,05	
			50		50	
			32	3,1	32x32x3,1	
			50		50	
			32	3,15	32x32x3,15	
			50		50	
			32	3,2	32x32x3,2	
			50		50	
	M12	40	40	3	Z081/40x40x3	
					3,05	3,05
					3,1	3,1
					3,15	3,15
					3,2	3,2

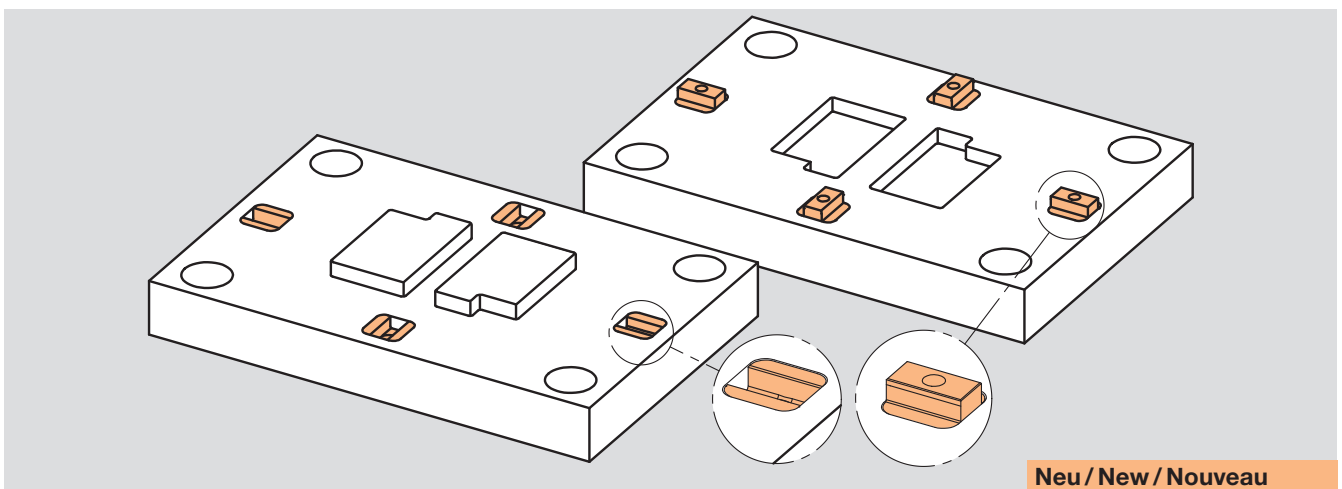
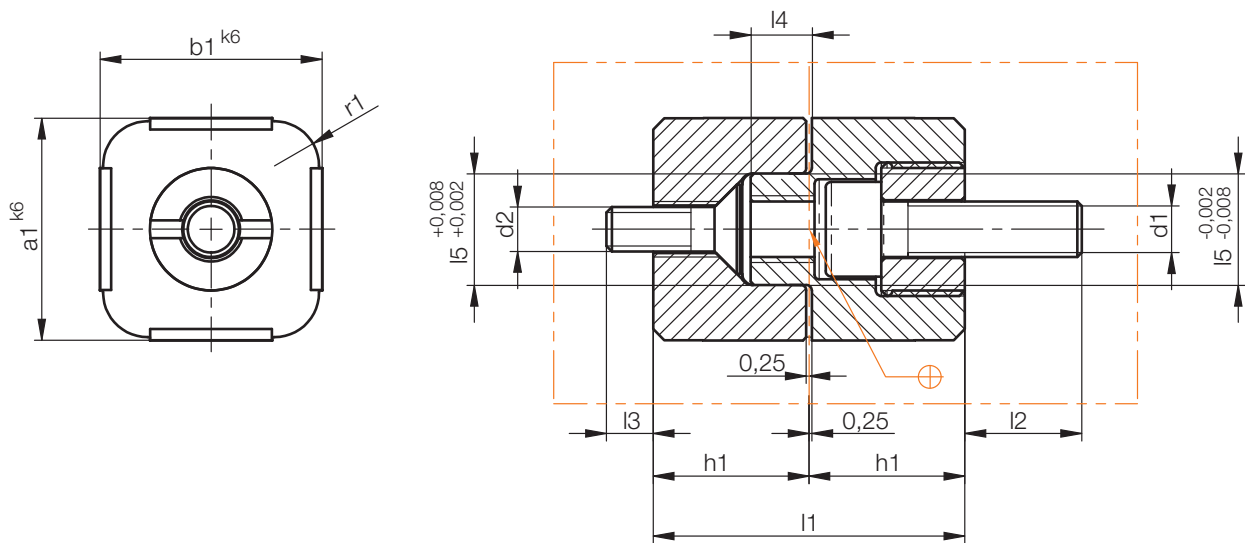
Z082/...

Vorzentriereinheit
Pre-locating unit
Unité de précentrage

Mat.: 1.2343 / DLC beschichtet
with DLC coating
avec revêtement DLC



1

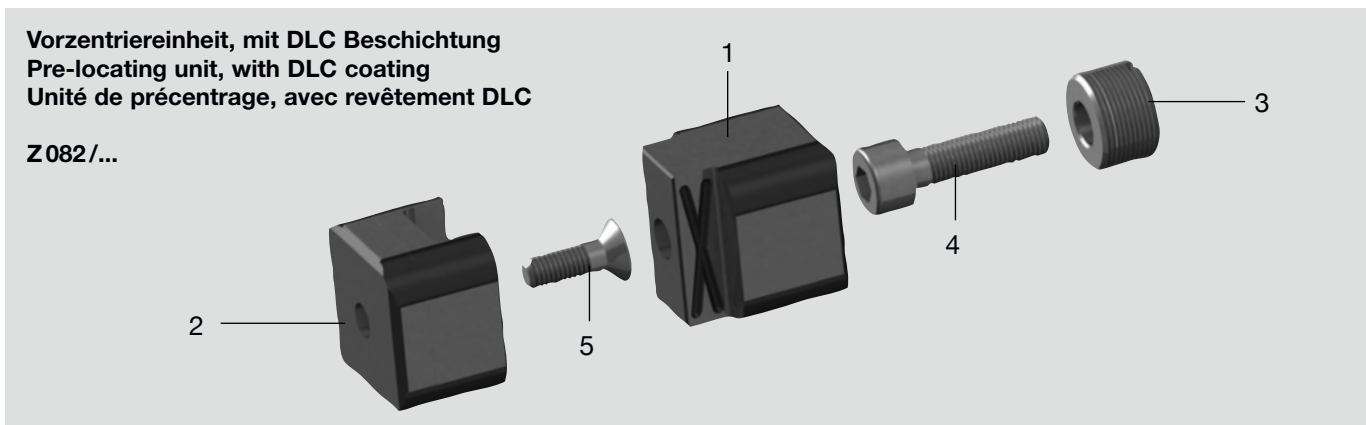
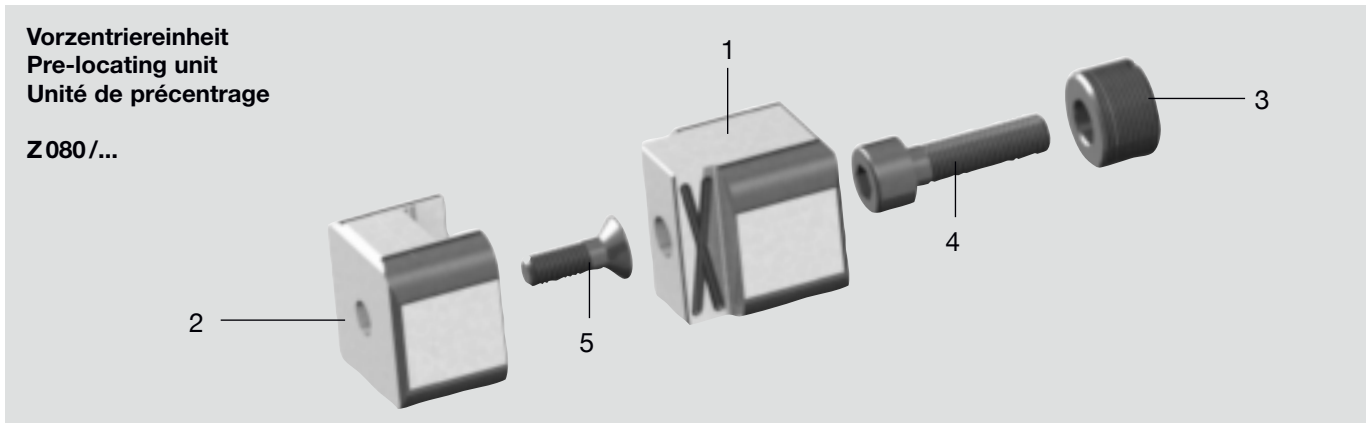


Neu / New / Nouveau

r1	d1	d2	h1	l1	l2	l3	l4	l5	a1	b1	Nr./No.
4	M5	M4	14	28	12	4	5,5	10	20	20	Z082/20x20
5	M6	M5	16	32	13	8	7,5	12	25	25	25x25
6	M8	M6	18	36	15	12	9,5	16	32	32	32x32
	M10	M8	22,5	45	17	10	11,5	20	40	40	40x40

Z080 /..., Z082 /...

Ersatzteile
Spare parts
Pièces détachées



Pos.	Benennung	Designation	Désignation	Stück Quantity Pièce
1	Oberteil, eintauchend	Upper part, male	Partie supérieure, plongeant	1
2	Unterteil, aufnehmend	Lower part, female	Partie inférieure, récepteur	1
3	Gewinding	Thread ring	Anneau fileté	1
4	Zylinderschraube	Hexagon socket head cap screw	Vis à tête cylindrique à 6 pans creux	1
5	Senkkopfschraube	Countersunk socket head screw	Vis à tête fraisée à 6 pans creux	1

Z080 /...

Nr. / No.	1 Z080 /...	2 Z080 /...	3 Z014 /...	4 Z31 /...	5 Z33 /...
Z080/20x20	...20x20-01/E	...20x20-02/E	...12x1 / 7,5-02/B	... 5x18	...4x12
25x25	...25x25-01/E	...25x25-02/E	...14x1 / 8,5-02/B	... 6x22	...5x16
32x32	...32x32-01/E	...32x32-02/E	...18x1 / 9,5-02/B	... 8x25	...6x20
40x40	...40x40-01/E	...40x40-02/E	...22x1,5/12,5-02/B	...10x30	...8x25

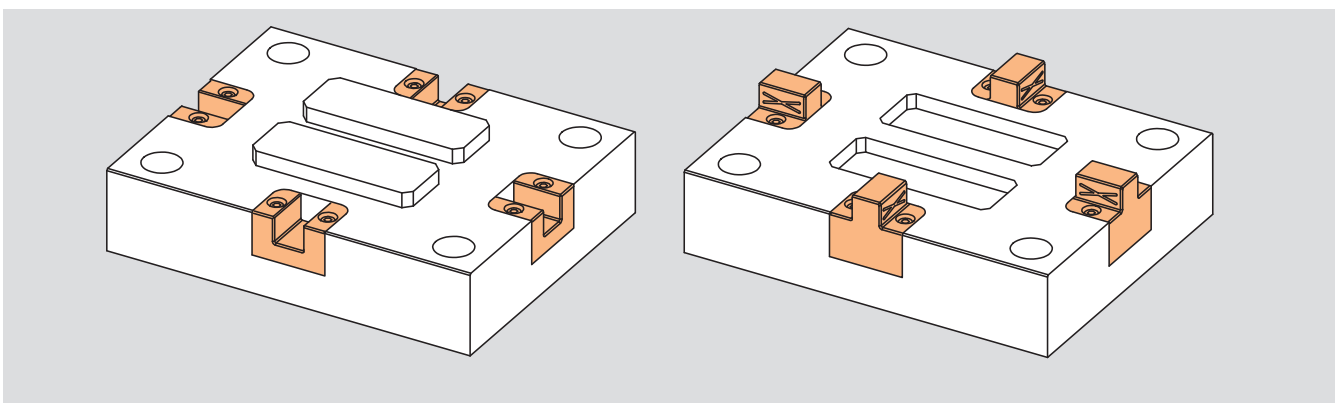
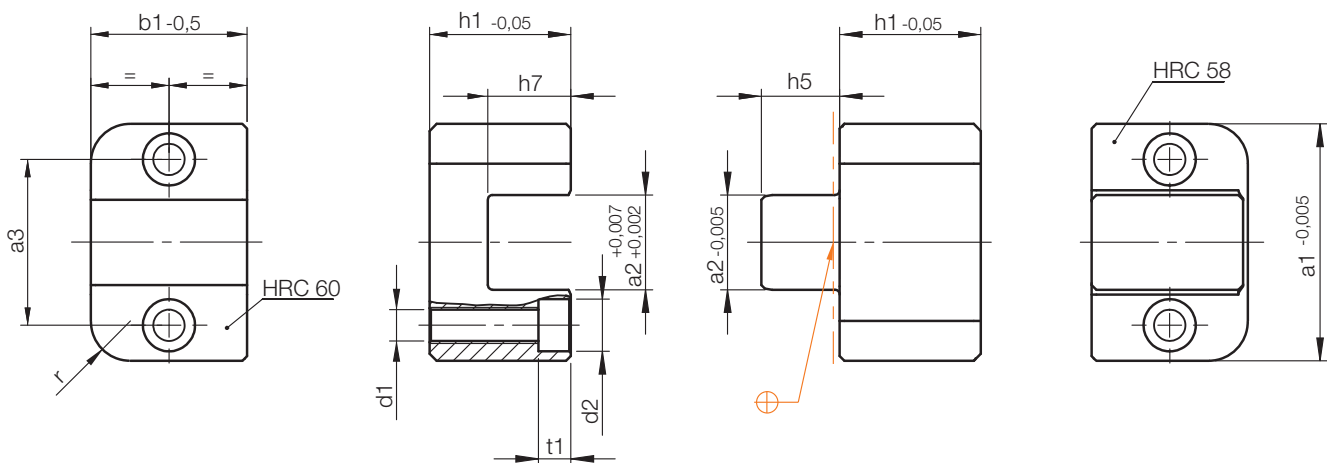
Z082 /...

Nr. / No.	1 Z082 /...	2 Z082 /...	3 Z014 /...	4 Z31 /...	5 Z33 /...
Z082/20x20	...20x20-01/E	...20x20-02/E	...12x1 / 7,5-02/B	... 5x18	...4x12
25x25	...25x25-01/E	...25x25-02/E	...14x1 / 8,5-02/B	... 6x22	...5x16
32x32	...32x32-01/E	...32x32-02/E	...18x1 / 9,5-02/B	... 8x25	...6x20
40x40	...40x40-01/E	...40x40-02/E	...22x1,5/12,5-02/B	...10x30	...8x25

Z085/.../1

Flachzentrierung
Flat locating unit
Unité de précentrage

Mat.: 1.2379



r	t1	d2	d1	a3	a2	h7	h5	h1	a1	b1	Typ	Nr./No.
6	4,6	8	M5	20	10	10	9	19,8	30	28	1	Z085/30x28 /1
8	6,8	11	M8	35	20	17,5	16,5	29,8	50	33		50x33
10	9	15	M10	52	30	25	24	39,8	75	38		75x38

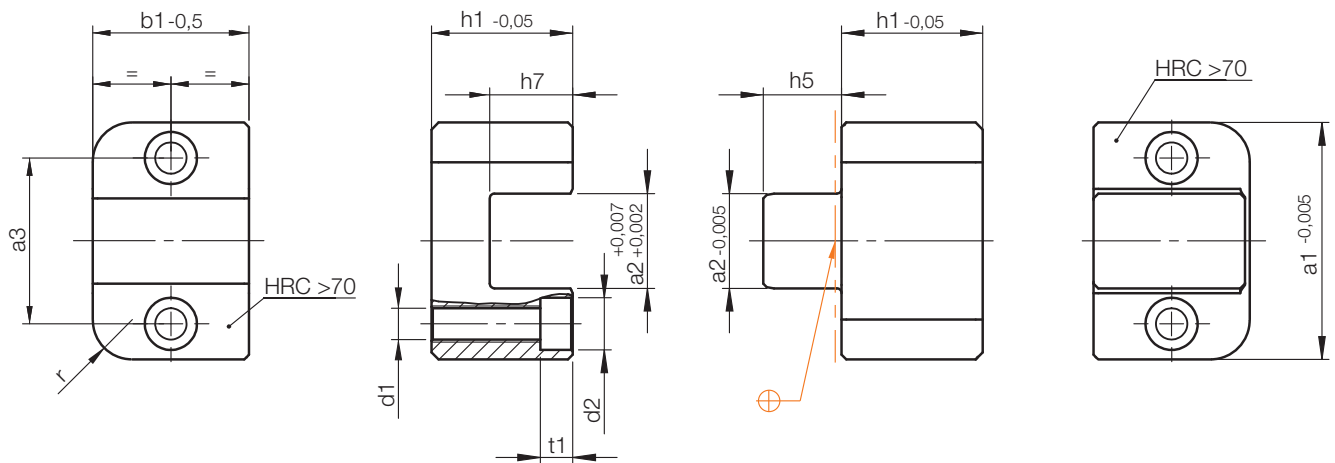
Z085/.../2

Flachzentrierung
 Flat locating unit
 Unité de précentrage

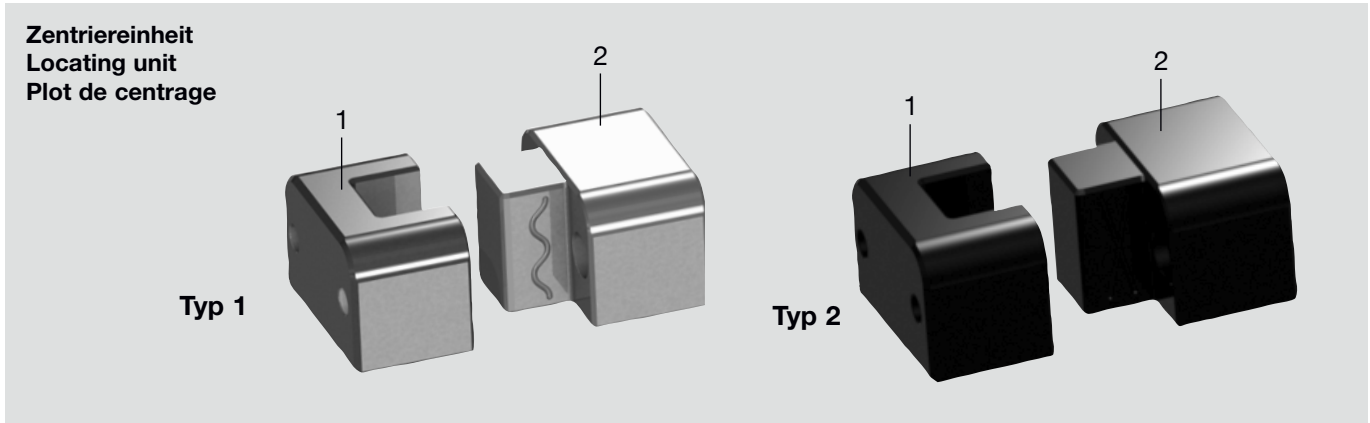
Mat.: 1.2379 / DLC beschichtet
 coated with DLC
 avec revêtement DLC



1



r	t1	d2	d1	a3	a2	h7	h5	h1	a1	b1	Typ	Nr./No.
6	4,6	8	M5	20	10	10	9	19,8	30	28	2	Z085/30x28 /2
8	6,8	11	M8	35	20	17,5	16,5	29,8	50	33		50x33
10	9	15	M10	52	30	25	24	39,8	75	38		75x38



Pos.	Benennung	Designation	Désignation	Stück Quantity Pièce
1	Zentriereinheit, aufnehmend	Locating unit, female	Plot de centrage, récepteur	1
2	Zentriereinheit, eintauchend	Locating unit, male	Plot de centrage, plongeant	1

Nr./No.	1 Z085/...	2 Z085/...
Z085/30x28/1	... 30x28/ 1-01/E	... 30x28/ 1-02/E
2	2-01/E	2-02/E
Z085/50x33/1	... 50x33/ 1-01/E	... 50x33/ 1-02/E
2	2-01/E	2-02/E
Z085/75x38/1	... 75x38/ 1-01/E	... 75x38/ 1-02/E
2	2-01/E	2-02/E

Typ 1 ohne DLC Beschichtung
Typ 2 mit DLC Beschichtung

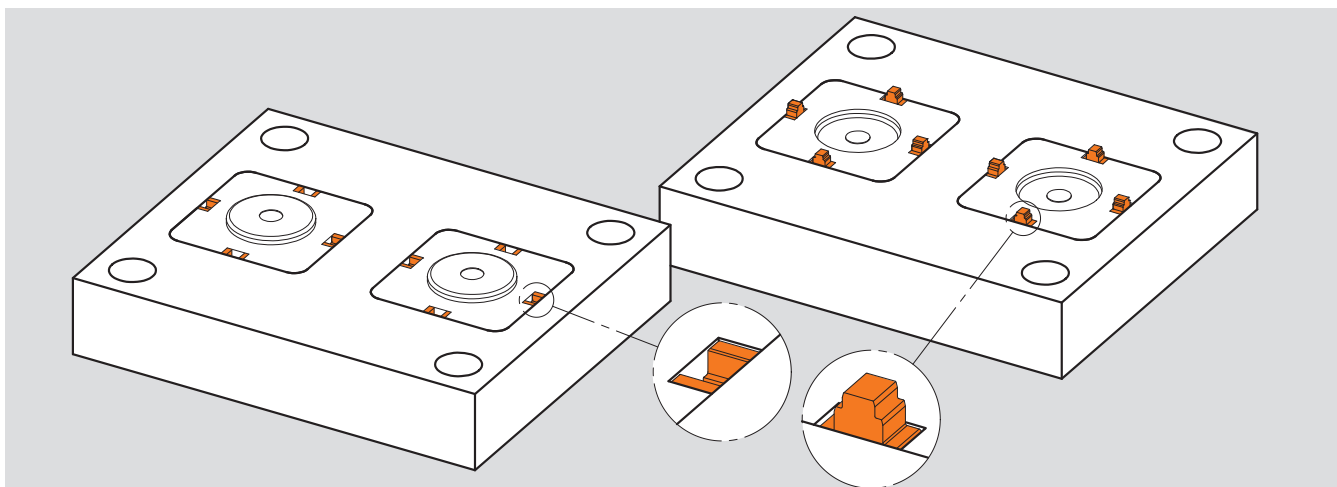
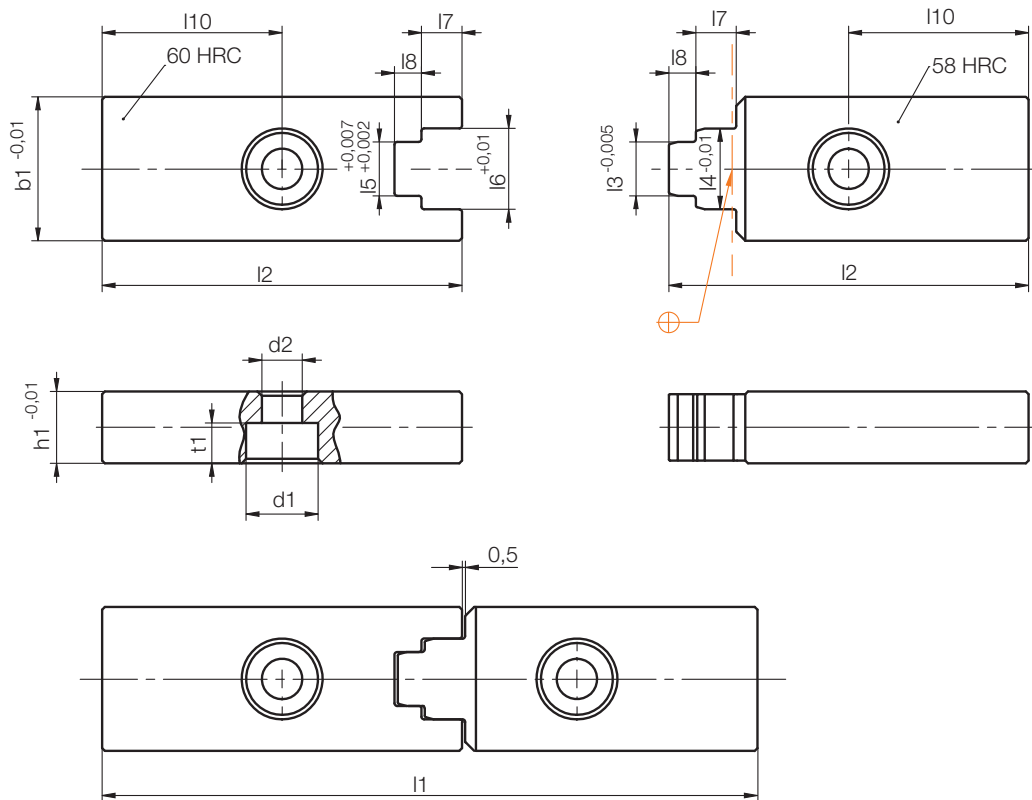
Type 1 without DLC coating
Type 2 with DLC coating

Type 1 sans revêtement DLC
Type 2 avec revêtement DLC

Z09/.../1

Zentriereinheit
Locating unit
Plot de centrage

Mat.: 1.2379



t1	d2	d1	l10	l8	l7	l6	l5	l4	l3	l2	b1	h1	l1	Typ	Nr./No.
4,6	4,5	8	20	3	4,5	9	6	8,97	6	40	16	8	73	1	Z09/16x 8x 73 / 1
6,9	6,6	11	30	5	6,5	12	9	11,97	9	60	20	12	109		20x12x109

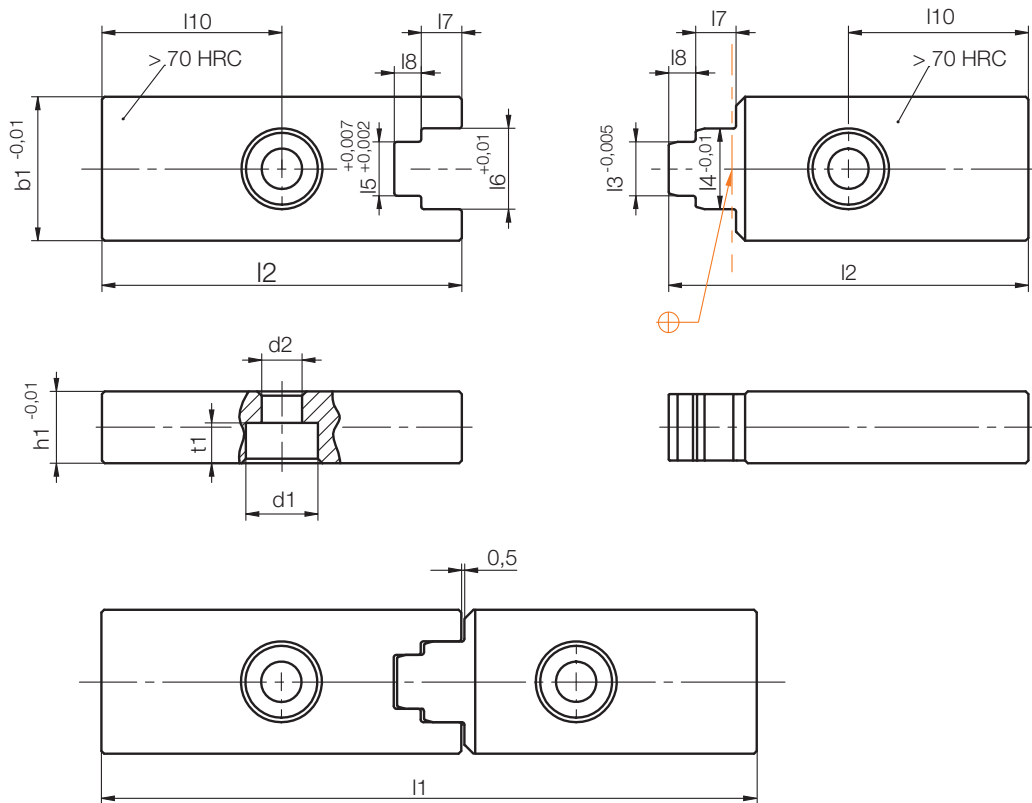
Z09/.../2

Zentriereinheit
Locating unit
Plot de centrage

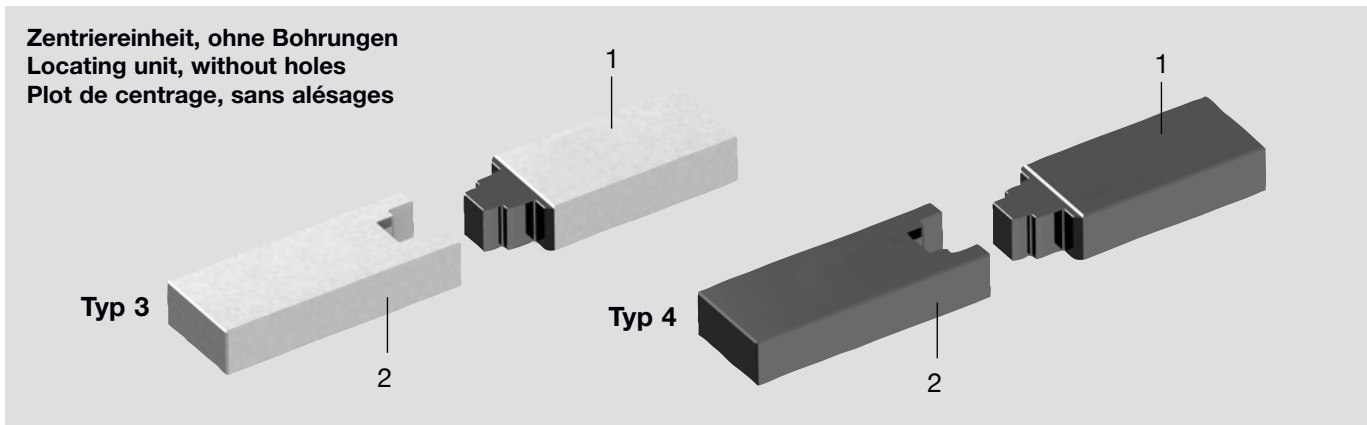
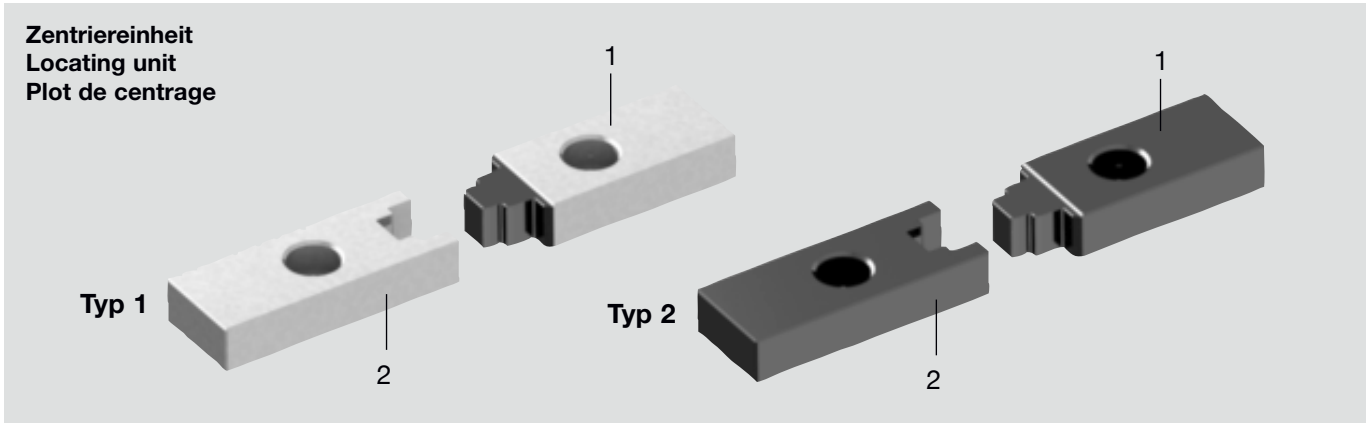
Mat.: 1.2379 / DLC beschichtet
coated with DLC
avec revêtement DLC



1



t1	d2	d1	l10	18	17	16	15	14	13	12	b1	h1	l1	Typ	Nr./No.
4,6	4,5	8	20	3	4,5	9	6	8,97	6	40	16	8	73	2	Z09/16x 8x 73 / 2
6,9	6,6	11	30	5	6,5	12	9	11,97	9	60	20	12	109		20x12x109



Pos.	Benennung	Designation	Désignation	Stück Quantity Pièce
1	Zentriereinheit, eintauchend	Locating unit, male	Plot de centrage, plongeant	1
2	Zentriereinheit, aufnehmend	Locating unit, female	Plot de centrage, récepteur	1

Nr./No.	1 Z09/...	2 Z09/...
Z09/16x 8x 73/1	...16x 8x 73/1-01/E	... 16x 8x 73/1-02/E
2	2-01/E	2-02/E
3	3-01/E	3-02/E
4	4-01/E	4-02/E
Z09/20x12x109/1	...20x12x109/1-01/E	... 20x12x109/1-02/E
2	2-01/E	2-02/E
3	3-01/E	3-02/E
4	4-01/E	4-02/E

Typ 1 ohne DLC Beschichtung

Typ 2 mit DLC Beschichtung

Typ 3 ohne Bohrungen
ohne DLC Beschichtung

Typ 4 ohne Bohrungen
mit DLC Beschichtung

Type 1 without DLC coating

Type 2 with DLC coating

Type 3 without holes
without DLC coating

Type 4 without holes
with DLC coating

Type 1 sans revêtement DLC

Type 2 avec revêtement DLC

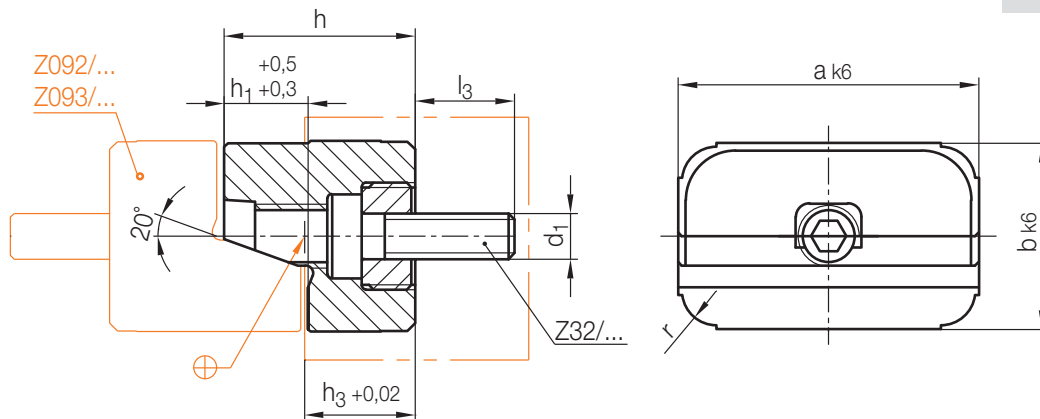
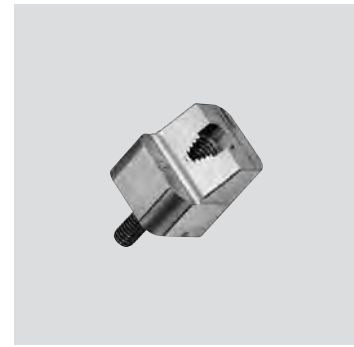
Type 3 sans alésages
sans revêtement DLC

Type 4 sans alésages
avec revêtement DLC

Z091/...

Verriegelungsstück, eintauchend
 Square interlock, male
 Verrou, plongeant

Mat.: 1.2343/53 ± 1 HRC

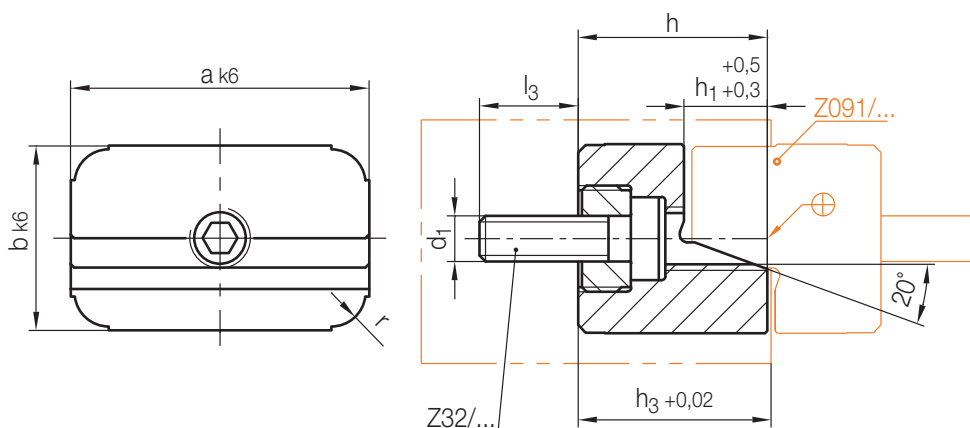


h_3	l_3	r	d_1	h	b	a	h_1	Nr./No.
12	12	4	M5	22	20	20	10	Z091/20x20x10
								40
14	13	5	M6	26	25	25	12	Z091/25x25x12
								40
18	15	6	M8	34	32	32	16	Z091/32x32x16
								50

Z092/...

Verriegelungsstück, aufnehmend
 Square interlock, female
 Verrou, récepteur

Mat.: 1.2343/53 ± 1 HRC

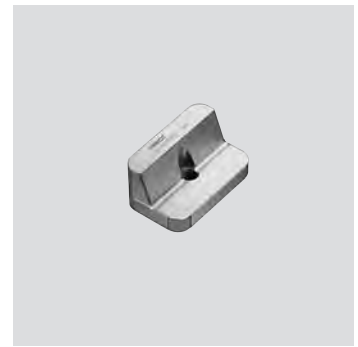


h_3	l_3	r	d_1	h	b	a	h_1	Nr./No.
22	12	4	M5	22	20	20	10	Z092/20x20x10
								40
26	13	5	M6	26	25	25	12	Z092/25x25x12
								40
34	15	6	M8	34	32	32	16	Z092/32x32x16
								50

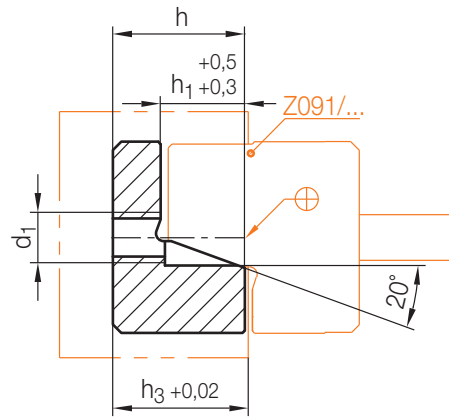
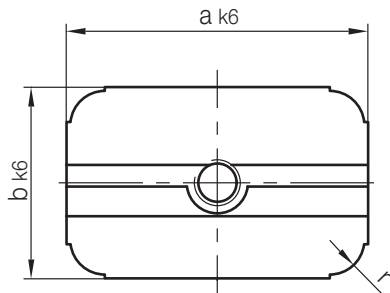
Z093/...

Verriegelungsstück, aufnehmend mit Gewinde
 Square interlock, female
 Verrou, récepteur avec filetage

Mat.: 1.2343/53 ± 1 HRC



1



h_3	r	d_1	h	b	a	h_1	Nr./No.
16	4	M5	16	20	20	10	Z093/20x20x10
					40		40
19	5	M6	19	25	25	12	Z093/25x25x12
					40		40
25	6	M8	25	32	32	16	Z093/32x32x16
					50		50

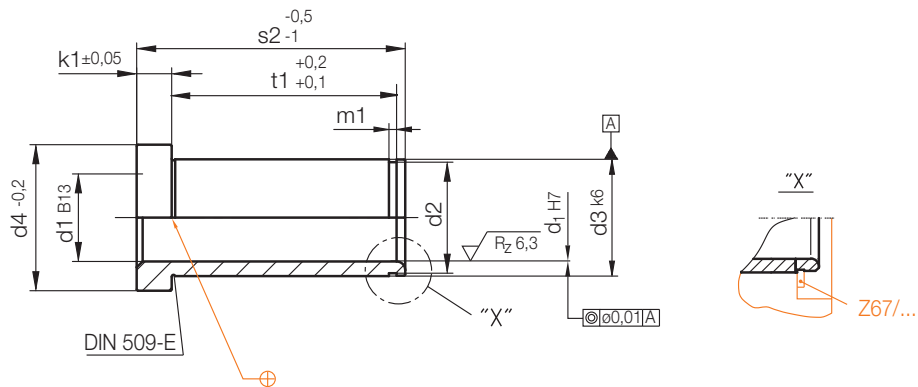
Z 1101/...

Führungsbuchse, ohne Zentrieransatz
 Guide bush, headed
 Bague de guidage, sans plot de centrage

Mat.: ≈ 1.0401/690 + 70 HV 30
 ≈ DIN 16716-E



1



Neu / New / Nouveau

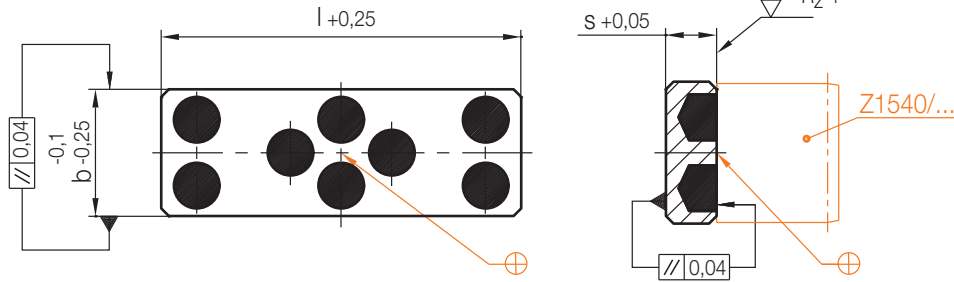
k1	d4	d3	m1	d2	t1	s2	d1	Nr. / No.
6	25	20	1,3	19	37,3	46	15	Z 1101/ 46x15
					47,3	56		56
	31	26	1,3	24,9	37,3	46	20	Z 1101/ 46x20
					57,3	66		66

k1	d4	d3	m1	d2	t1	s2	d1	Nr. / No.				
6	35	30	1,6	28,6	46,6	56	22	Z 1101/ 56x22				
					66,6	76		76				
									56,6	66	24	Z 1101/ 66x24
									76,6	86		86

Z15W/...

Flachgleitlager, selbstschmierend
 Slide plate, self-lubricating
 Palier lisse plat, autolubrifiante

Mat.: 2.0492
 max. °C: 200

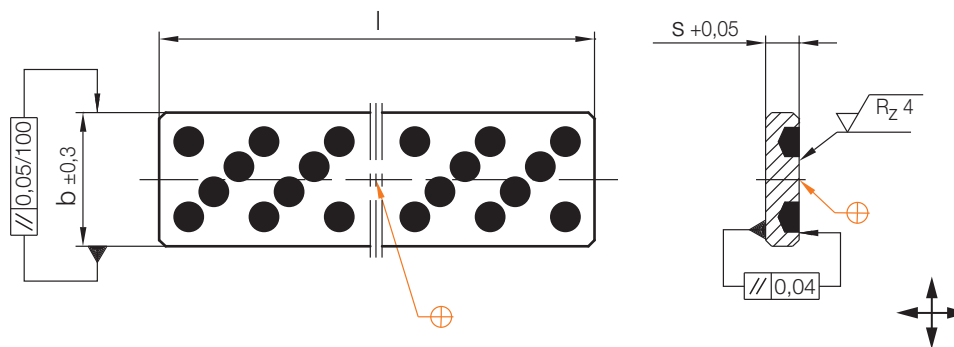
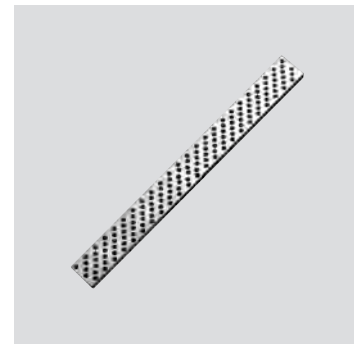


b	s	l	Nr./No.
16	8	40	Z15W/16x 8x40
18		50	18x 8x50
20	10	63	20x10x63
25		71	25x10x71
28		80	28x10x80

Z16W/...

Flachführung, selbstschmierend
 Guide rail, self-lubricating
 Plaque de frottement avec inserts, autolubrifiante

Mat.: 2.0492
 max. °C: 200



b	s	l	Nr./No.
32	8	500	Z16W/32x 8x500
50	10		50x10x500
80	12		80x12x500

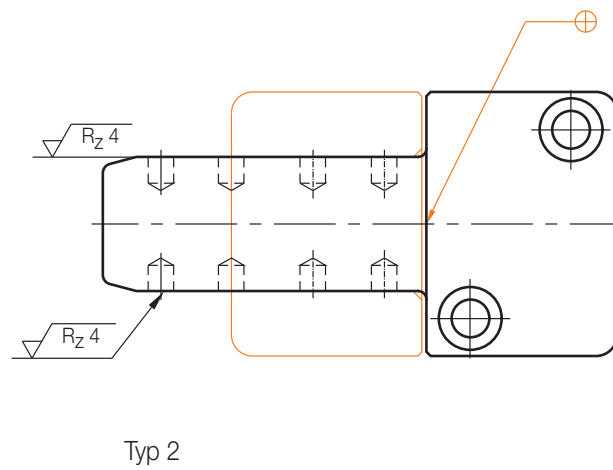
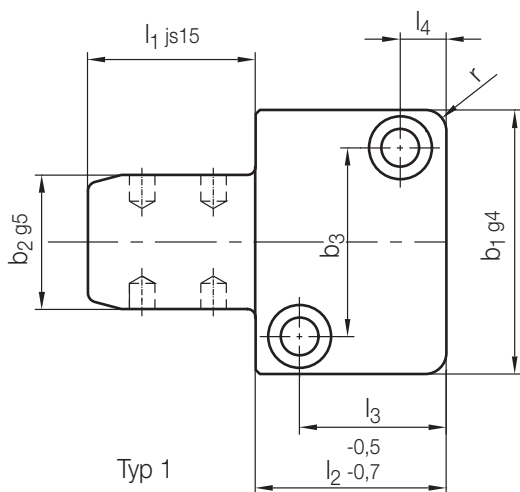
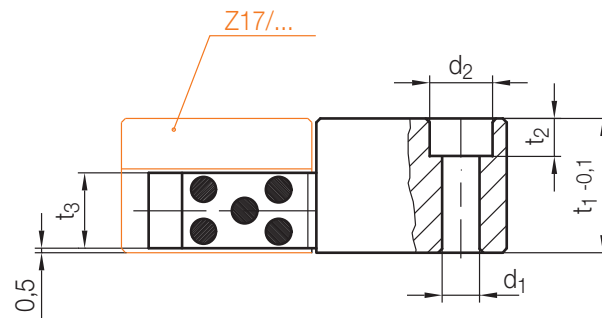
Z07/...

Rechteckführung
 Square guide bar
 Guidage rectangulaire

Mat.: 1.7131/580 + 40 HV 30
 max. °C: 200



1

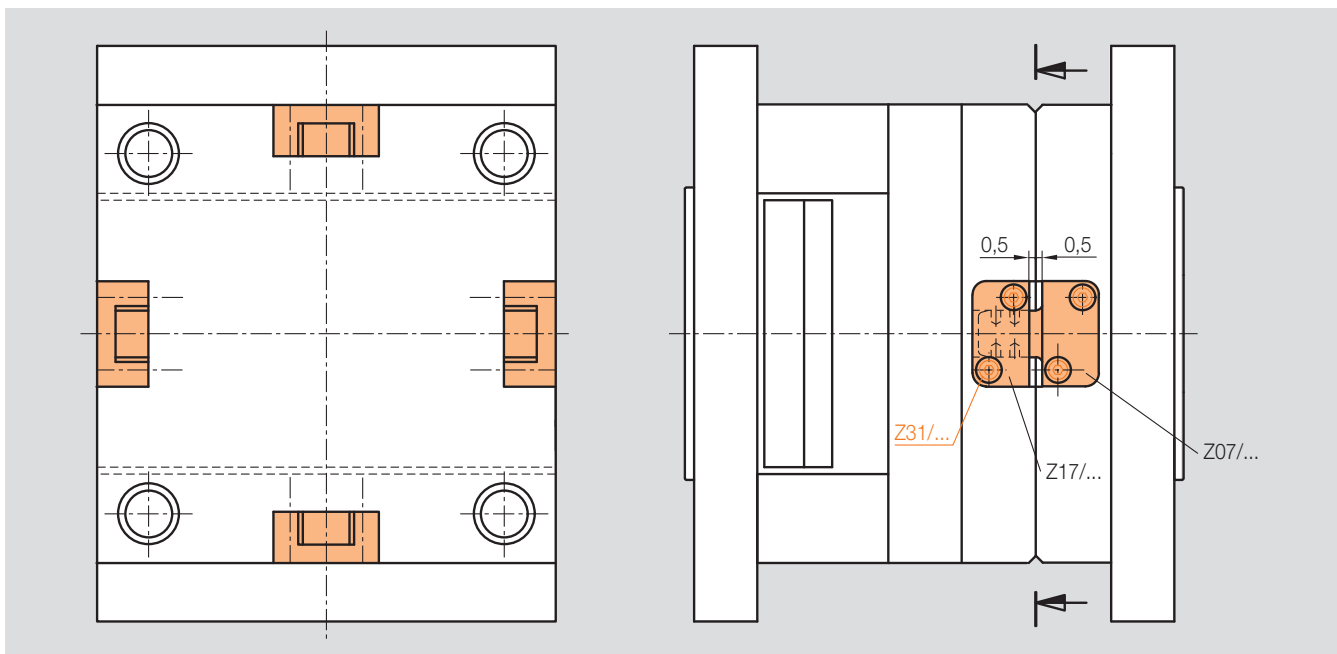
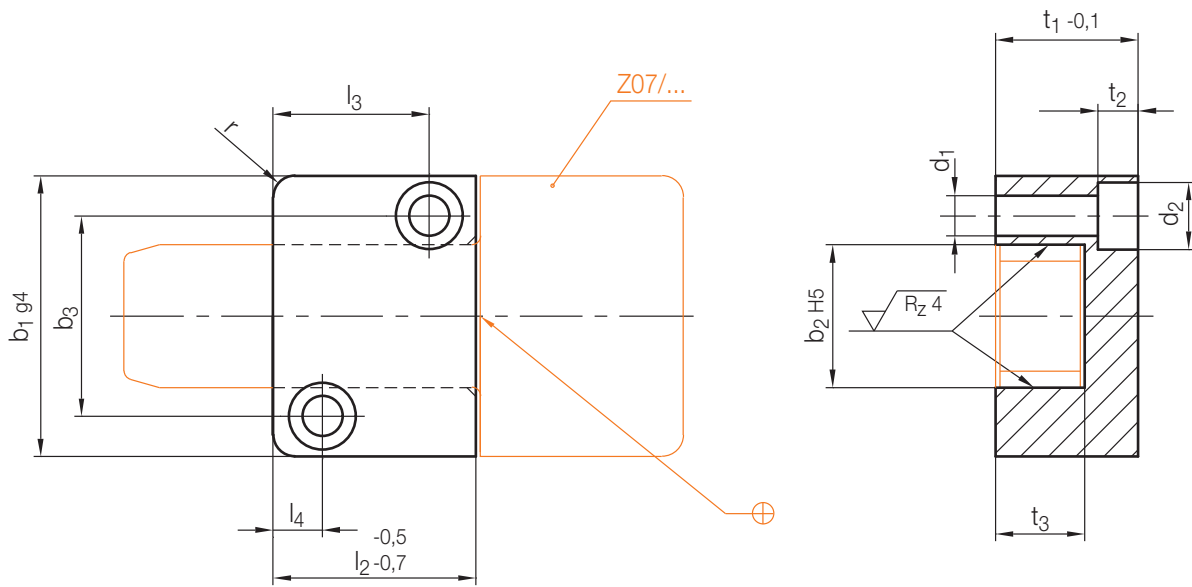


Typ	r	t ₃	t ₂	t ₁	d ₂	d ₁	l ₄	l ₃	b ₃	b ₁	l ₂	b ₂	l ₁	Nr./No.
1	6	11	6,9	20	11	6,6	7	15	26	40	22	16	20	Z07/22/16x 20
2														40
1	8	13		22				19	31	45	27	20	25	Z07/27/20x 25
2														50
1	8	14		25			9	27	35	50	36	25	32	Z07/36/25x 32
2														63
1	10	19	9	32	15	9	11	35	45	63	46	32	40	Z07/46/32x 40
2														80
1	10	22	11	36	18	11	15	40	60	85	56	40	50	Z07/56/40x 50
2														100
1	10	24	13	40	20	14	18	48	74	100	66	50	56	Z07/66/50x 56
2														112

Z17/...

Führungsaufnahme
Guide retainer
Logement de guidage

Mat.: 1.7131/700 + 60 HV 30

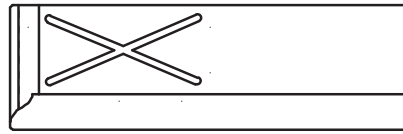


r	t ₃	t ₂	t ₁	d ₂	d ₁	l ₄	l ₃	b ₃	b ₁	l ₂	b ₂	Nr./No.
6	12	6,2	20	10,3	6,3	7	15	26	40	22	16	Z17/22/16
	14		19				31	45	27	20	27/20	
8	15	9	25	15	9	9	27	35	50	36	25	36/25
	20		11			35	45	63	46	32	46/32	
10	23	11	36	18	11	15	40	60	85	56	40	56/40
	25		13			40	20	14	18	48	74	100

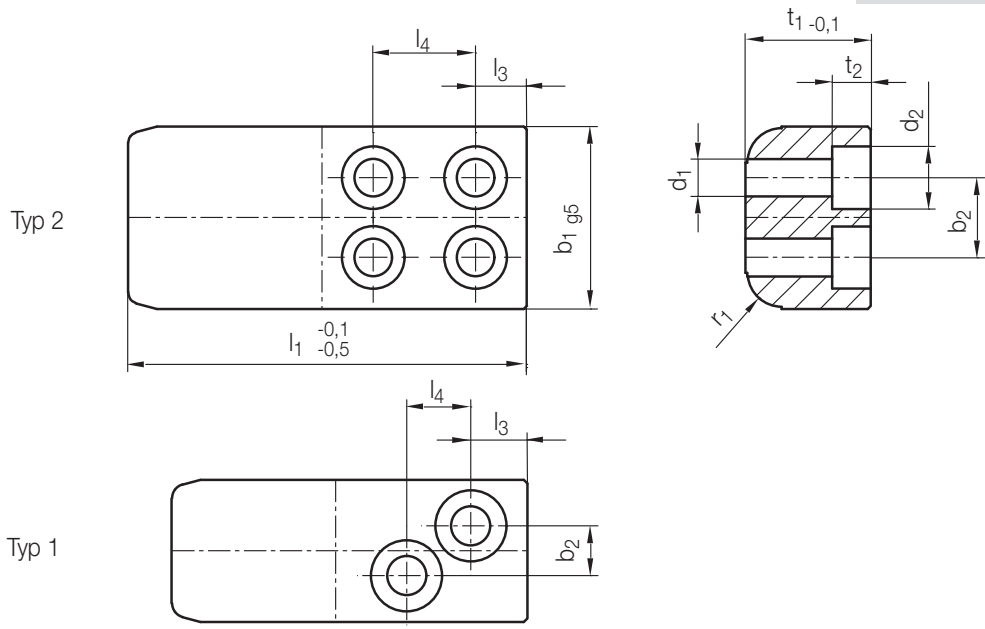
Z 18/...

Führungsblock
Guide block
Plot de guidage plat

Mat.: 1.2162 60HRC



1

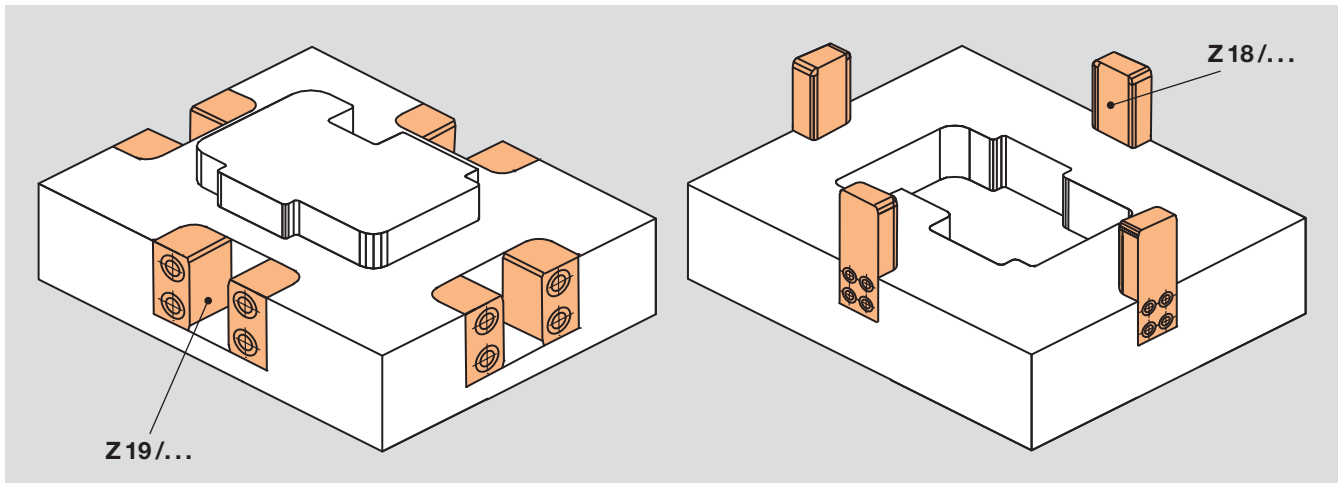
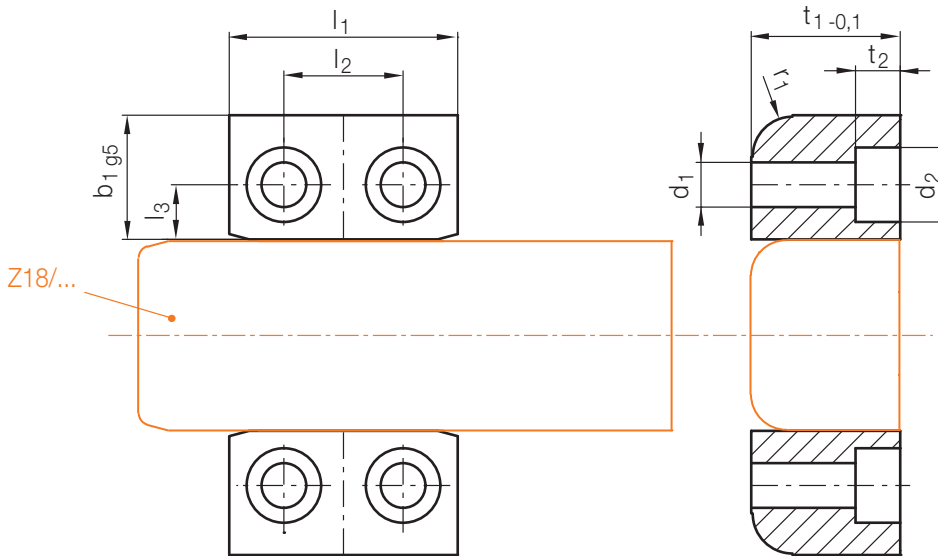


Typ	r ₁	t ₂	d ₂	d ₁	b ₂	l ₄	l ₃	b ₁	t ₁	l ₁	Nr./No.
1	6	5,7	10	5,5	7	9	8	20	18	50	Z 18/20x18x 50
										75	75
										90	90
2	8	9	15	9	24	21	12	50	30	70	Z 18/32x22x 70
										90	90
										112	112
										125	125
										150	150
										175	175
	10	11	18	11	30	26	15	63	32	90	Z 18/50x30x 90
										125	125
										150	150
										175	175
										200	200
										250	250
12	13	20	13,5	55	32	18	100	50	112	Z 18/63x32x112	
									150	150	
									175	175	
									200	200	
									250	250	
									300	300	
15	13	20	13,5	55	32	18	100	50	112	Z 18/80x35x112	
									150	150	
									175	175	
									200	200	
									250	250	
									300	300	
15	13	20	13,5	55	32	18	100	50	175	Z 18/100x50x175	
									200	200	
									250	250	
									300	300	
15	13	20	13,5	75	35	20	120	65	200	Z 18/120x65x200	
									250	250	
									250	250	
									300	300	

Z 19/...

Führungsbacke
Guide jaw
Plot pour logement de guidage plat

Mat.: 1.2162 58HRC



r ₁	t ₂	d ₂	d ₁	l ₃	l ₂	b ₁	t ₁	l ₁	Nr./No.
6	5,7	10	5,5	8	12	18	18	27	Z 19/18x18x27
	6,8	11	6,6	10	16	20	22	36	20x22x36
8	9	15	9	11	24	25	30	46	25x30x46
10	11	18	11	16	30	32	32	56	32x32x56
12						35	35		35x35x56
15	13	20	13,5	17	40	40	50	76	40x50x76
				20	50	45	65	86	45x65x86

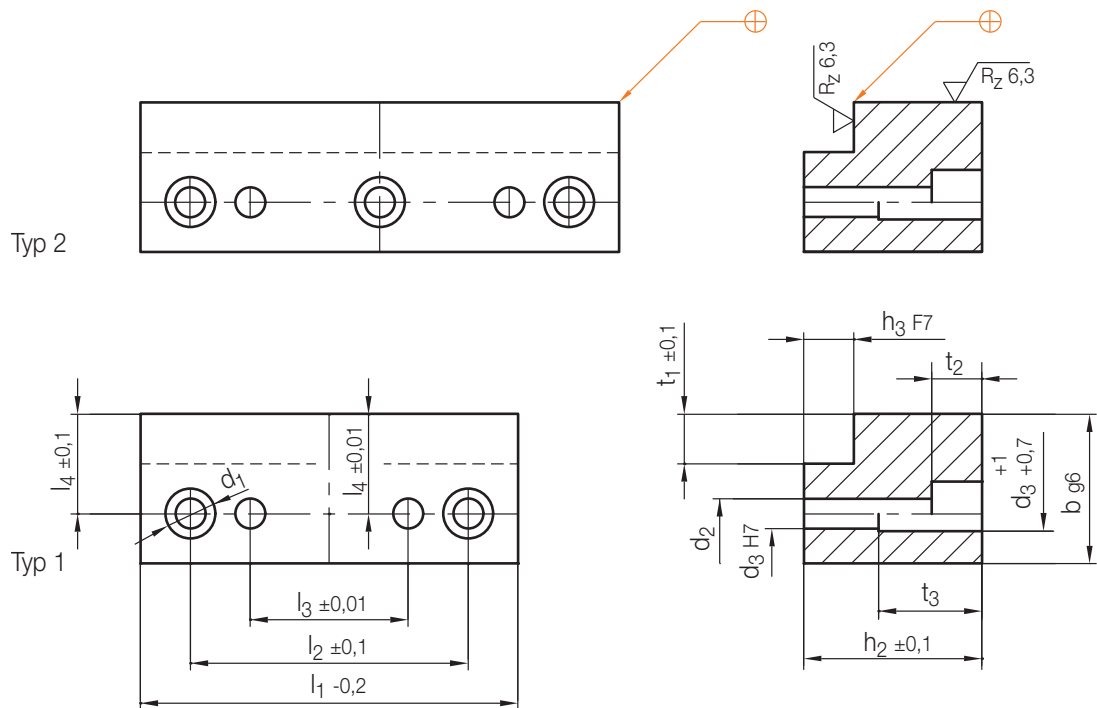
Z 185/...

Führungsleiste
Guide strip
Barre de guidage

Mat.: 1.2842/58 + 2 HRC



1

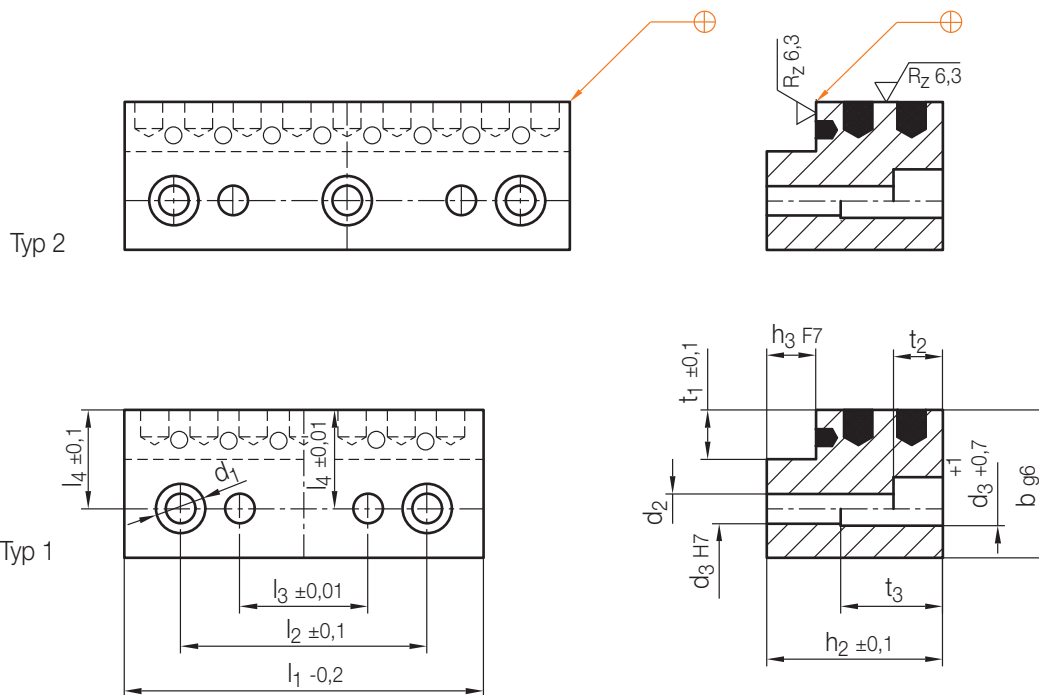


Typ	t ₃	t ₂	t ₁	d ₃	d ₂	d ₁	l ₄	l ₃	l ₂	h ₃	h ₂	b	Z 180/... h ₁	l ₁	Nr./No.
1	—	5,7	5	5	5,5	10	9,5	14	34	4	11	16	12	50	Z 185/16x12x 50
								35	55					71	71
								54	74					90	90
2	9,5	6,8	6	6,6	11	12	12	40	64	5	19	20	20	80	Z 185/20x20x 80
								60	84					100	100
								85	109					125	125
1	19	9	6	8	9	15	15,5	50	80	6	31	25	32	100	Z 185/25x32x100
								75	105					125	125
								110	140					160	160
2	34	11	7	10	11	18	18	55	95	8	49	30	50	125	Z 185/30x50x125
								90	130					160	160
								130	170					200	200

Z 185 W/...

Führungsleiste, selbstschmierend
 Guide strip, self lubricating
 Barre de guidage, autolubrifiante

Mat.: 2.0492 / 180 HB
 max. °C: 200



Typ	t ₃	t ₂	t ₁	d ₃	d ₂	d ₁	l ₄	l ₃	l ₂	h ₃	h ₂	b	Z 180/... h ₁	l ₁	Nr./No.
1	—	5,7	5	5	5,5	10	9,5	14	34	4	11	16	12	50	Z 185W/16x12x 50
								35	55					71	71
								54	74					90	90
2	9,5	6,8		6	6,6	11	12	40	64	5	19	20	20	80	Z 185W/20x20x 80
								60	84					100	100
								85	109					125	125
1	19	9	6	8	9	15	15,5	50	80	6	31	25	32	100	Z 185W/25x32x100
								75	105					125	125
								110	140					160	160
2	34	11	7	10	11	18	18	55	95	8	49	30	50	125	Z 185W/30x50x125
								90	130					160	160
								130	170					200	200

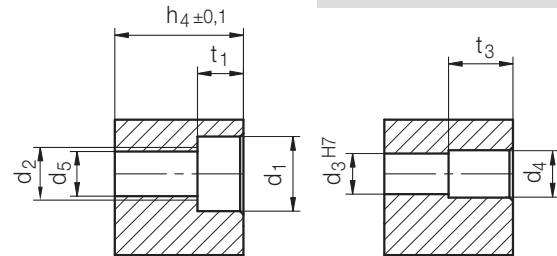
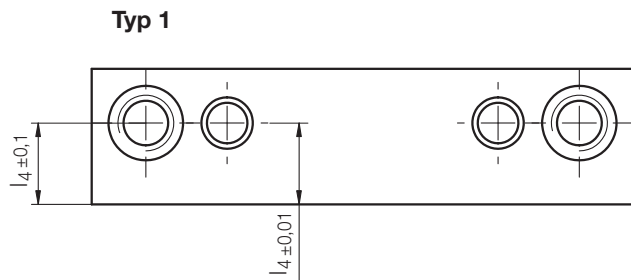
Z 1850/...

Führungsleiste
Guide strip
Barre de guidage

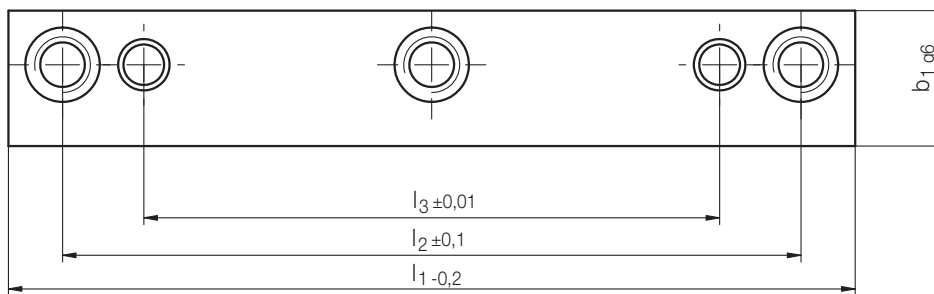
Mat.: 1.2842/58 HRC



1



Typ 2

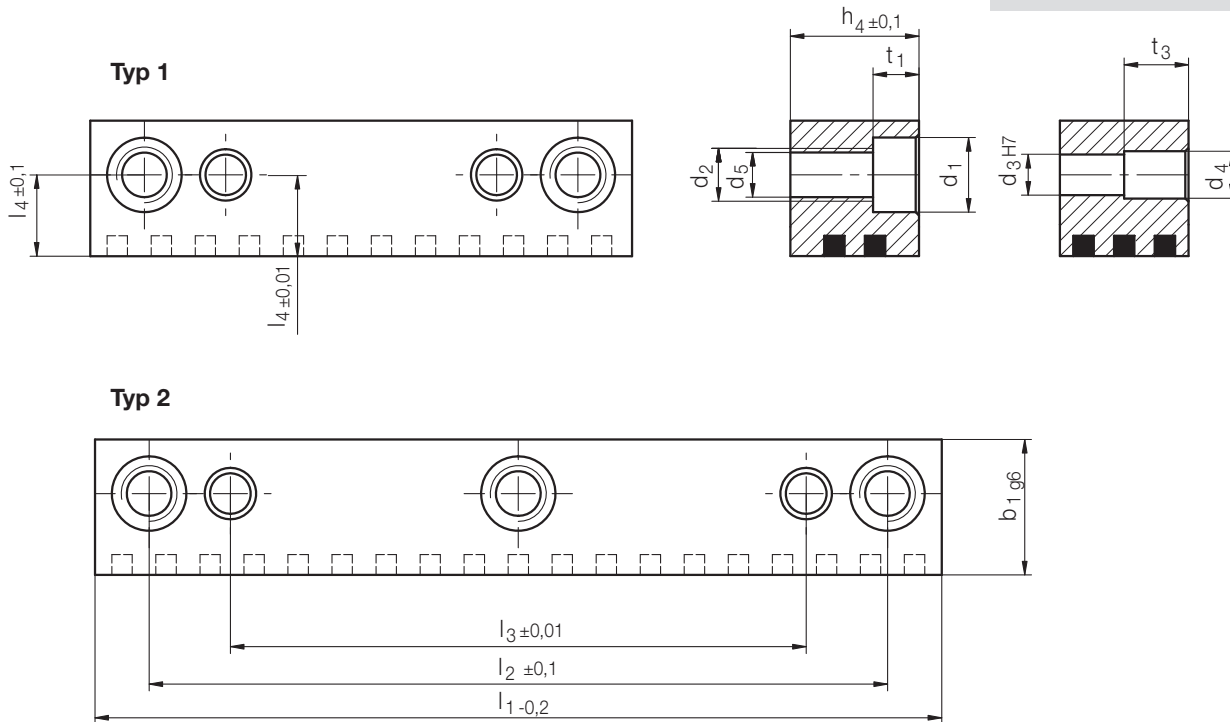
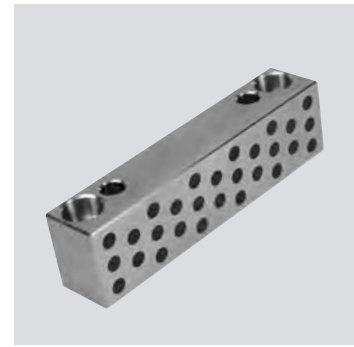


Typ	t ₃	t ₁	d ₅	d ₄	d ₃	d ₂	d ₁	l ₄	l ₃	l ₂	b ₁	h ₄	l ₁	Nr./No.
1	-	4	5,3	-	5	M 6	10	9,5	14	34	16	7	50	Z 1850/16 x 7 x 50
2									35	55			71	71
									54	74			90	90
1	3	5,7							14	34	11	11	50	Z 1850/16 x 11 x 50
2									35	55			71	71
									54	74			90	90
1	4	6,8	6,8	7	6	M 8	11	12	40	64	20	14	80	Z 1850/20 x 14 x 80
2									60	84			100	100
									85	109			125	125
1	9								40	64	19	19	80	Z 1850/20 x 19 x 80
2									60	84			100	100
									85	109			125	125
1	12	9	8,5	9	8	M10	15	15,5	50	80	25	25	100	Z 1850/25 x 25 x 100
2									75	105			125	125
									110	140			160	160
1	20								50	80	33	33	100	Z 1850/25 x 33 x 100
2									75	105			125	125
									110	140			160	160
1	26	11	10,5	11	10	M12	18	18	55	95	30	41	125	Z 1850/30 x 41 x 125
2									90	130			160	160
									130	170			200	200
1	39								55	95	54	54	125	Z 1850/30 x 54 x 125
2									90	130			160	160
									130	170			200	200

Z 1850W/...

Führungsleiste, selbstschmierend
 Guide strip, self lubricating
 Barre de guidage, autolubrifiante

Mat.: 2.0492 / 180 HB



Typ	t ₃	t ₁	d ₅	d ₄	d ₃	d ₂	d ₁	l ₄	l ₃	l ₂	b ₁	h ₄	l ₁	Nr./No.
1	-	4	5,3	6	5	M 6	10	9,5	14	34	16	7	50	Z 1850W/16x 7x 50
									35	55			71	71
									54	74			90	90
1	3	5,7	6,8	7	6	M 8	11	12	14	34	20	14	50	Z 1850W/16x 11x 50
									35	55			71	71
									54	74			90	90
1	4	6,8	6,8	7	6	M 8	11	12	40	64	20	14	80	Z 1850W/20x 14x 80
									60	84			100	100
									85	109			125	125
1	9	9	8,5	9	8	M10	15	15,5	40	64	25	19	80	Z 1850W/20x 19x 80
									60	84			100	100
									85	109			125	125
1	12	9	8,5	9	8	M10	15	15,5	50	80	25	25	100	Z 1850W/25x 25x 100
									75	105			125	125
									110	140			160	160
1	20	11	10,5	11	10	M12	18	18	50	80	33	33	100	Z 1850W/25x 33x 100
									75	105			125	125
									110	140			160	160
1	26	11	10,5	11	10	M12	18	18	55	95	30	41	125	Z 1850W/30x 41x 125
									90	130			160	160
									130	170			200	200
1	39	11	10,5	11	10	M12	18	18	55	95	54	54	125	Z 1850W/30x 54x 125
									90	130			160	160
									130	170			200	200

Z 1851/...

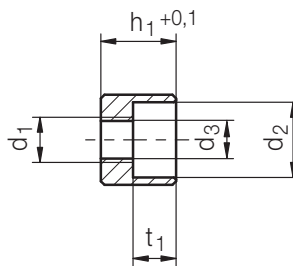
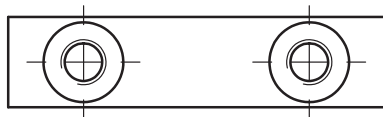
Führungsleiste
Guide strip
Barre de guidage

Mat.: 1.2379/58 HRC

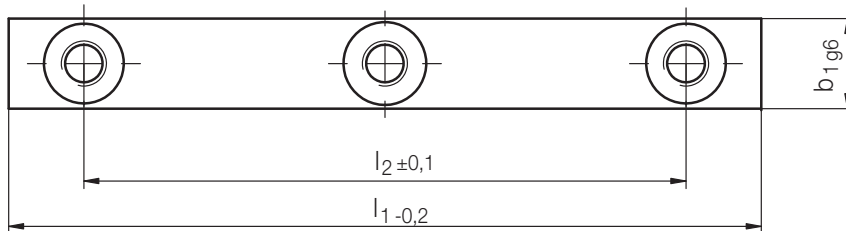


1

Typ 1



Typ 2



Typ	t ₁	d ₃	d ₂	d ₁	l ₂	b ₁	h ₁	l ₁	Nr./No.
1	5,7	5,3	10	M6	30	12	10	50	Z 1851/12x10x 50
2					70			90	90
					80			125	125
1	6,8	6,8	11	M8	30	16	16	50	Z 1851/16x16x 50
2					70			90	90
					105			125	125
1	6,8	6,8	11	M8	60	20	20	80	Z 1851/20x16x 80
2					105			125	125
					140			160	160
1	6,8	6,8	11	M8	60	25	20	80	Z 1851/25x20x 80
2					105			125	125
					140			160	160

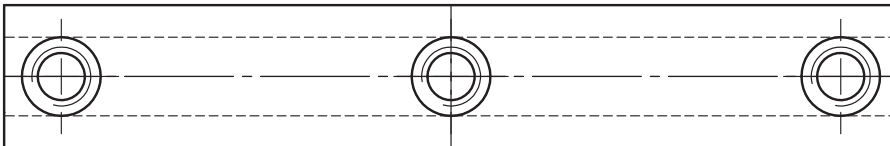
Z 1852 / ...

Führungsleiste
Guide strip
Barre de guidage

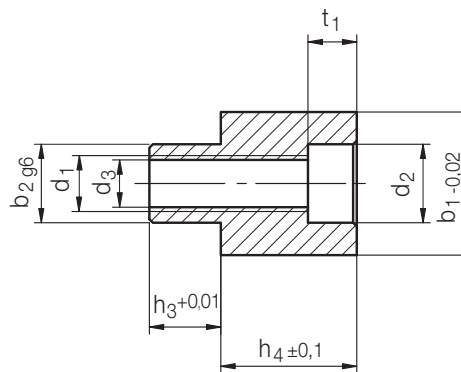
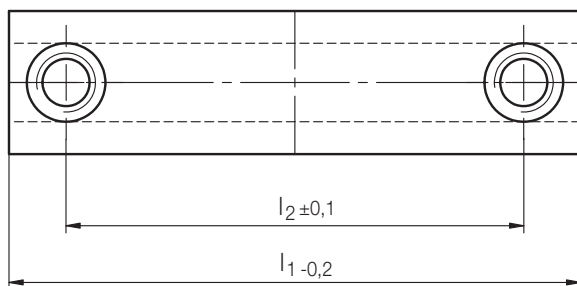
Mat.: 1.2379 / 58 HRC



Typ 2



Typ 1



Typ	t ₁	d ₃	d ₂	d ₁	l ₂	b ₂	h ₃	b ₁	h ₄	l ₁	Nr./No.
1	4	5,3	10	M 6	34	8	8	16	7	50	Z 1852 / 16x 7x 50
					55					71	71
					74					90	90
1	5,7	5,3	10	M 6	34	8	8	16	11	50	Z 1852 / 16x 11x 50
					55					71	71
					74					90	90
2	5,7	5,3	10	M 6	74	8	8	16	11	90	90
					34					50	Z 1852 / 16x 11x 50
					55					71	71
1	6,8	6,8	11	M 8	64	12	10	20	14	80	Z 1852 / 20x 14x 80
					84					100	100
					109					125	125
2	6,8	6,8	11	M 8	109	12	10	20	14	125	125
					64					80	Z 1852 / 20x 14x 80
					84					100	100
1	9	8,5	15	M10	80	15	12	25	25	100	Z 1852 / 25x 25x 100
					105					125	125
					140					160	160
2	9	8,5	15	M10	140	15	12	25	25	160	160
					80					100	Z 1852 / 25x 25x 100
					105					125	125
1	9	10,5	18	M12	95	18	16	30	41	125	Z 1852 / 30x 41x 125
					130					160	160
					170					200	200
2	9	10,5	18	M12	170	18	16	30	41	200	200
					95					125	Z 1852 / 30x 41x 125
					130					160	160

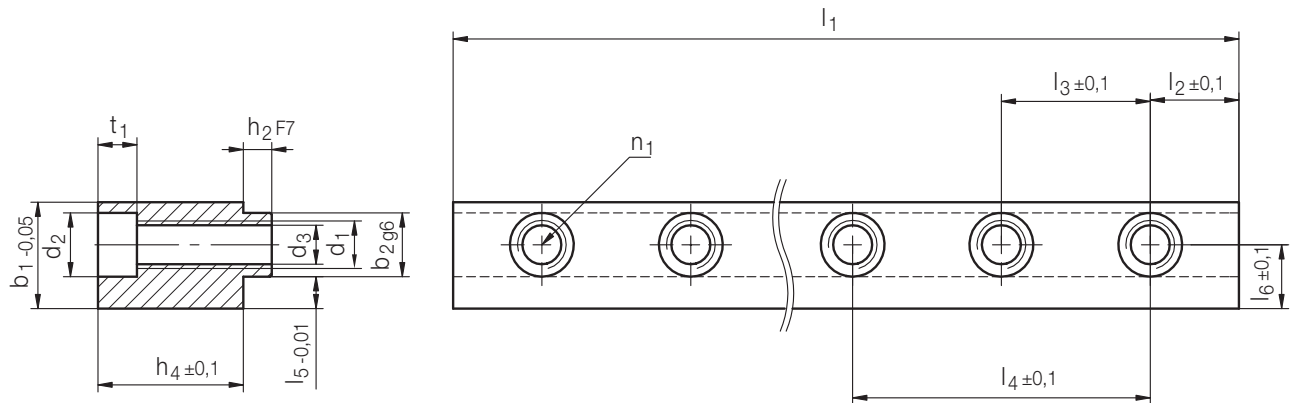
Z 1853/...

Führungsleiste, ablängbar
 Guide strip, can be cut as required
 Barre de guidage, pouvant être raccourci

Mat.: 1.2379/58 HRC



1

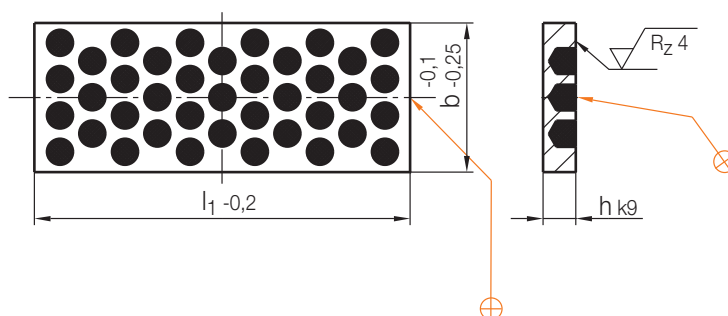
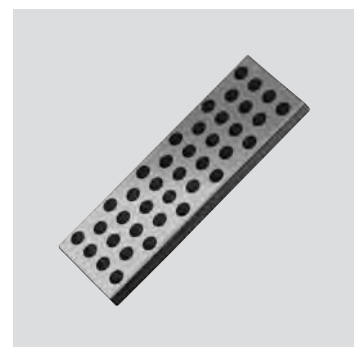


n ₁	h ₂	t ₁	d ₃	d ₂	d ₁	l ₆	l ₅	l ₄	l ₃	l ₂	b ₂	b ₁	h ₄	l ₁	Nr./No.
9	4	4	5,3	10	M 6	10	6	70	35	10	8	16	7	300	Z 1853/16 x 7 x 300
		5,7											11	300	16 x 11 x 300
12	5	6,8	6,8	11	M 8	12	7			17,5	10	20	14	420	20 x 14 x 420
10	6	9	8,5	15	M10	15	8	100	50	25	14	25	25	500	25 x 25 x 500
	8	11	10,5	18	M12	18	9				18	30	41	500	30 x 41 x 500

Z 186W/...

Flachführung, selbstschmierend
 Guide rail, self lubricating
 Plaque de frottement avec inserts autolubrifiante

Mat.: 2.0492
 max. °C: 200



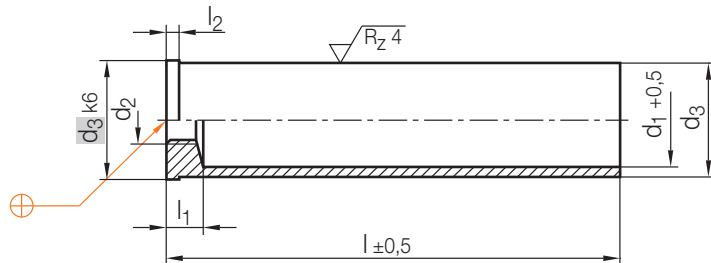
b	h	l ₁	Nr./No.
25	5	50	Z 186W/25x5x 50
		71	71
		90	90
40	5	50	Z 186W/40x5x 50
		71	71
		90	90
40	6	80	Z 186W/40x6x 80
		100	100
		125	125

b	h	l ₁	Nr./No.
40	6	160	Z 186W/40x6x160
		200	200
		63	6
		100	100
		125	125
		160	160

Z20/...

Zentrierhülse
Centring sleeve
Douille de centrage

Mat.: ≈ 1.0401/690 + 70 HV 30
≈ DIN 16759



l ₁	l ₂	d ₁	d ₂	d ₃	Tol.	l	Nr./No.
8	2	11	M 8	14	g6	20	Z20/14x 20
						30	30
						40	40
						50	50
						60	60
						70	70
						80	80
						100	100
						10	2
40	40						
60	60						
80	80						
100	100						
120	120						
140	140						
160	160						
13	2,5	21	M12	26	g6	30	Z20/26x 30
						40	40
						60	60
						80	80
						100	100
						120	120
						140	140
						160	160
13	2,5	25	M12	30	g6	40	Z20/30x 40
						60	60

l ₁	l ₂	d ₁	d ₂	d ₃	Tol.	l	Nr./No.
13	2,5	25	M12	30	g6	80	Z20/30x 80
						100	100
						120	120
						140	140
						160	160
						180	180
						200	200
						240	240
16	4,5	33	M12	42	g6	40	Z20/42x 40
						60	60
						80	80
						100	100
						120	120
						140	140
						160	160
						180	180
16	4,5	43	M12	54	f6	60	Z20/54x 60
						80	80
						120	120
						160	160
						200	200
						240	240
						280	280